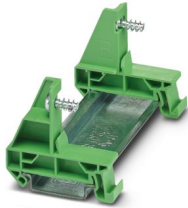


# DR 35-PC 35 - DIN rail adapter

1708409

<https://www.phoenixcontact.com/us/products/1708409>

Please be informed that the data shown in this PDF document is generated from our online catalog. Please find the complete data in the user documentation. Our general terms of use for downloads are valid.



DIN rail adapter, for snapping the PC 35/IPC 35 connector onto a DIN rail, color: green, mounting type: NS 35/7,5, NS 35/15

## Commercial data

Item number	1708409
Packing unit	10 pc
Minimum order quantity	10 pc
Sales key	AA05
Product key	AAEMBA
GTIN	4046356998291
Weight per piece (including packing)	19.54 g
Weight per piece (excluding packing)	17.55 g
Customs tariff number	85389099
Country of origin	CN

# DR 35-PC 35 - DIN rail adapter

1708409

<https://www.phoenixcontact.com/us/products/1708409>



## Technical data

### Product properties

Product family	DR 35-PC
Number of positions	1
Pitch	15 mm

### Dimensions

Pitch	15 mm
-------	-------

### Material specifications

Color (Housing)	green (RAL 6021)
-----------------	------------------

# DR 35-PC 35 - DIN rail adapter



1708409

<https://www.phoenixcontact.com/us/products/1708409>

## Classifications

### ECLASS

ECLASS-13.0	27460405
ECLASS-15.0	27460405

### ETIM

ETIM 10.0	EC002943
-----------	----------

### UNSPSC

UNSPSC 21.0	39121400
-------------	----------

# DR 35-PC 35 - DIN rail adapter



1708409

<https://www.phoenixcontact.com/us/products/1708409>

## Environmental product compliance

### EU RoHS

Fulfills EU RoHS substance requirements	Yes, No exemptions
---	--------------------

### China RoHS

Environment friendly use period (EFUP)	EFUP-E
	No hazardous substances above the limits

### EU REACH SVHC

REACH candidate substance (CAS No.)	No substance above 0.1 wt%
-------------------------------------	----------------------------

### EF3.1 Climate Change

CO2e kg	0.127 kg CO2e
---------	---------------

Phoenix Contact 2026 © - all rights reserved  
<https://www.phoenixcontact.com>

Phoenix Contact USA  
586 Fulling Mill Road  
Middletown, PA 17057, United States  
(+717) 944-1300  
[info@phoenixcon.com](mailto:info@phoenixcon.com)