

VS-08-A-RJ45/MOD-1-R-IP67 - Panel-mount frame



1689844

<https://www.phoenixcontact.com/us/products/1689844>

Please be informed that the data shown in this PDF document is generated from our online catalog. Please find the complete data in the user documentation. Our general terms of use for downloads are valid.



RJ45 panel mounting frame, IP67, for modular socket inserts (Keystone), for round panel cutout, with grommet, with thread and union nut, color: gray

Commercial data

Item number	1689844
Packing unit	1 pc
Minimum order quantity	5 pc
Sales key	AB17
Product key	ABNNDB
GTIN	4017918970802
Weight per piece (including packing)	11.5 g
Weight per piece (excluding packing)	9.63 g
Customs tariff number	85389099
Country of origin	DE

1689844

<https://www.phoenixcontact.com/us/products/1689844>

Technical data

Product properties

Product type	Panel-mount frame
Application	Modular insert
Type	RJ45
Number of positions	8
Connection profile	RJ45
Number of slots	1

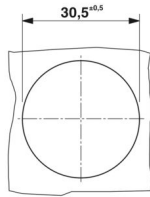
Insulation characteristics

Overvoltage category	III
Degree of pollution	2

Electrical properties

Transmission medium	Copper
---------------------	--------

Dimensions

Dimensional drawing	
Width	36 mm
Height	36 mm
Depth	16.5 mm
Length	16.4 mm

Material specifications

Color	gray
Material	Plastic
Flammability rating according to UL 94	V0
Seal material	NBR
Seal material, flat gasket	NBR
Housing material	Plastic
Housing surface material	PA, light gray
Contact material	Copper alloy
Contact surface material	Au/Ni
Contact carrier material	Polyester GF

Mechanical properties

VS-08-A-RJ45/MOD-1-R-IP67 - Panel-mount frame



1689844

<https://www.phoenixcontact.com/us/products/1689844>

Mechanical data

Insertion/withdrawal cycles	≥ 1000
-----------------------------	--------

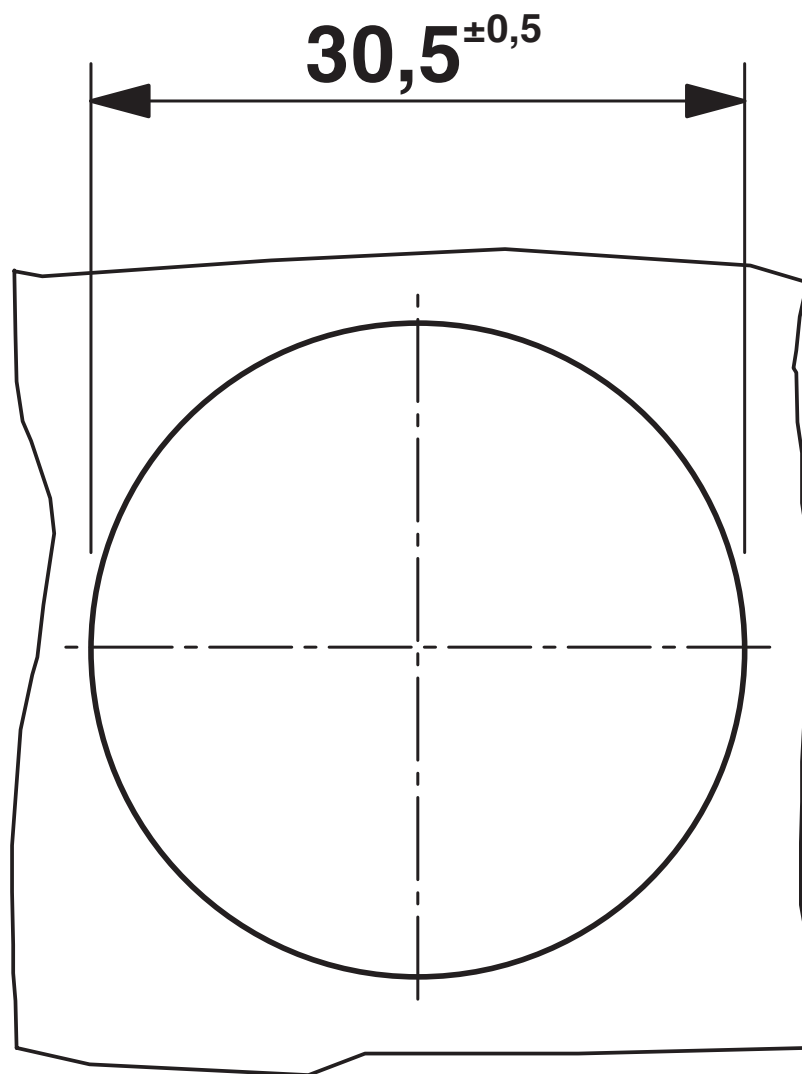
Environmental and real-life conditions

Ambient conditions

Degree of protection	IP65/IP67
Ambient temperature (operation)	-40 °C ... 80 °C
Ambient temperature (storage/transport)	-40 °C ... 70 °C
Ambient temperature (assembly)	-5 °C ... 55 °C

Drawings

Dimensional drawing



Mounting cutout

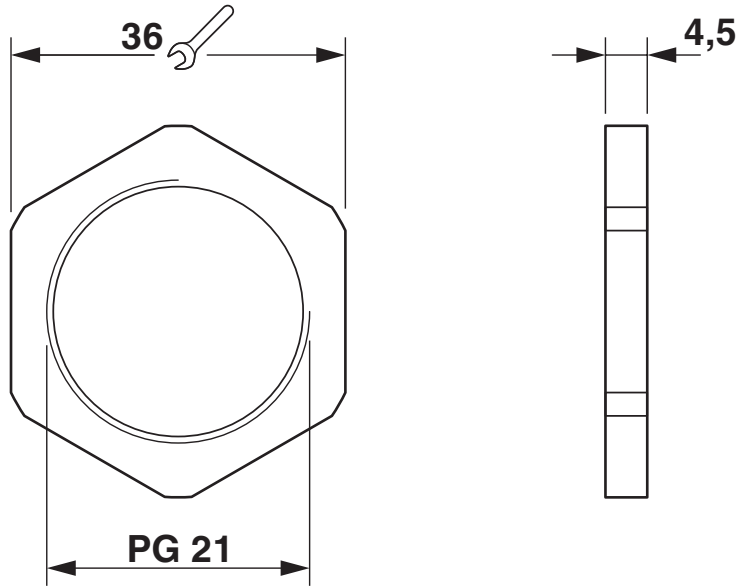
VS-08-A-RJ45/MOD-1-R-IP67 - Panel-mount frame



1689844

<https://www.phoenixcontact.com/us/products/1689844>

Dimensional drawing



Union nut

1689844

<https://www.phoenixcontact.com/us/products/1689844>

Classifications

ECLASS

ECLASS-13.0	27440392
ECLASS-15.0	27440210

ETIM

ETIM 10.0	EC002310
-----------	----------

UNSPSC

UNSPSC 21.0	39121400
-------------	----------

VS-08-A-RJ45/MOD-1-R-IP67 - Panel-mount frame



1689844

<https://www.phoenixcontact.com/us/products/1689844>

Environmental product compliance

EU RoHS

Fulfills EU RoHS substance requirements	Yes, No exemptions
-----------------------------------------	--------------------

China RoHS

Environment friendly use period (EFUP)	EFUP-E
	No hazardous substances above the limits

EU REACH SVHC

REACH candidate substance (CAS No.)	No substance above 0.1 wt%
-------------------------------------	----------------------------

Phoenix Contact 2026 © - all rights reserved
<https://www.phoenixcontact.com>

Phoenix Contact USA
586 Fulling Mill Road
Middletown, PA 17057, United States
(+717) 944-1300
info@phoenixcon.com