

HCM-SET-PF97 - Connector set



1678680

<https://www.phoenixcontact.com/us/products/1678680>

Please be informed that the data shown in this PDF document is generated from our online catalog. Please find the complete data in the user documentation. Our general terms of use for downloads are valid.



Connector set, consisting of: B6 sleeve housing and panel mounting base with single locking latch and cover, hinged retaining frame, modular plug and socket inserts, crimp contacts, and crimp adapters

Commercial data

Item number	1678680
Packing unit	10 pc
Minimum order quantity	1 pc
Product key	AF7AFX
GTIN	4017918316280
Weight per piece (including packing)	448.08 g
Weight per piece (excluding packing)	448.08 g
Country of origin	DE

HCM-SET-PF97 - Connector set

1678680

<https://www.phoenixcontact.com/us/products/1678680>

Set consists of

CK4,0-ED-6,00BU AG - Crimp contact

1663307

<https://www.phoenixcontact.com/us/products/1663307>



Crimp contact, series: HC-M-03, Socket, turned, contact diameter: 4 mm, rated current: 40 A, connection cross section: 6 mm² ... 6 mm², AWG 10...10, contact material: Cu alloy

CK1,6-ED-0,75BU AG - Crimp contact

1663417

<https://www.phoenixcontact.com/us/products/1663417>



Crimp contact, series: HC-M-12, Socket, turned, contact diameter: 1.6 mm, rated current: 10 A, connection cross section: 0.75 mm² ... 0.75 mm², AWG 18...18, contact material: Cu alloy

HCM-SET-PF97 - Connector set

1678680

<https://www.phoenixcontact.com/us/products/1678680>

CK4,0-ED-6,00ST AG - Crimp contact

1663268

<https://www.phoenixcontact.com/us/products/1663268>



Crimp contact, series: HC-M-03, Pin, turned, contact diameter: 4 mm, rated current: 40 A, connection cross section: 6 mm² ... 6 mm², AWG 10...10, contact material: Cu alloy

CK1,6-ED-0,75ST AG - Crimp contact

1663352

<https://www.phoenixcontact.com/us/products/1663352>



Crimp contact, series: HC-M-12, Pin, turned, contact diameter: 1.6 mm, rated current: 10 A, connection cross section: 0.75 mm² ... 0.75 mm², AWG 18...18, contact material: Cu alloy

HCM-SET-PF97 - Connector set

1678680

<https://www.phoenixcontact.com/us/products/1678680>

HC-B 6-AMLD - Housing

1771147

<https://www.phoenixcontact.com/us/products/1771147>

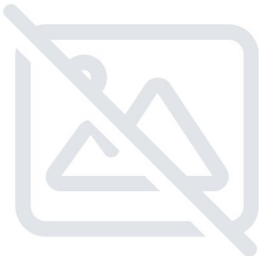


HEAVYCON B6 panel mounting base, with single locking latch, height: 29 mm, with plastic cover, with flat gasket

HC-M-MHR-A2-N - Hinged retaining frame

1679281

<https://www.phoenixcontact.com/us/products/1679281>



HEAVYCON hinged retaining frame, for HC-B 6 supporting base element, for 2 modules, labeling with lower case letters (a, b)

HCM-SET-PF97 - Connector set

1678680

<https://www.phoenixcontact.com/us/products/1678680>



HC-M-03-MOD-BU - Contact insert module

1663226

<https://www.phoenixcontact.com/us/products/1663226>



HEAVYCON contact insert module, female, 3-pos., crimp connection

HC-M-12-MOD-BU - Contact insert module

1663323

<https://www.phoenixcontact.com/us/products/1663323>



HEAVYCON contact insert module, female, 12-pos., crimp connection

HCM-SET-PF97 - Connector set

1678680

<https://www.phoenixcontact.com/us/products/1678680>



HC-M-MHR-T2-N - Hinged retaining frame

1679249

<https://www.phoenixcontact.com/us/products/1679249>



HEAVYCON hinged retaining frame, for HC-B 6 sleeve housing, for 2 modules, labeling with upper case letters (A, B)

HC-M-03-MOD-ST - Contact insert module

1663213

<https://www.phoenixcontact.com/us/products/1663213>



HEAVYCON contact insert module, male, 3-pos., crimp connection

HCM-SET-PF97 - Connector set

1678680

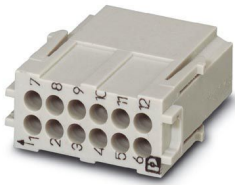
<https://www.phoenixcontact.com/us/products/1678680>



HC-M-12-MOD-ST - Contact insert module

1663310

<https://www.phoenixcontact.com/us/products/1663310>



HEAVYCON contact insert module, male, 12-pos., crimp connection

HCM-SET-PF97 - Connector set



1678680

<https://www.phoenixcontact.com/us/products/1678680>

Technical data

Product properties

Product type	Connector set
--------------	---------------

HCM-SET-PF97 - Connector set



1678680

<https://www.phoenixcontact.com/us/products/1678680>

Classifications

ECLASS

ECLASS-13.0	27440115
ECLASS-15.0	27440113

HCM-SET-PF97 - Connector set



1678680

<https://www.phoenixcontact.com/us/products/1678680>

Environmental product compliance

EU REACH SVHC

REACH candidate substance (CAS No.)	
-------------------------------------	--

	No substance above 0.1 wt%
--	----------------------------

Phoenix Contact 2026 © - all rights reserved

<https://www.phoenixcontact.com>

Phoenix Contact USA
586 Fulling Mill Road
Middletown, PA 17057, United States
(+717) 944-1300
info@phoenixcon.com