

# CK2,5-ED-2,50BU AU - Crimp contact



1674862

<https://www.phoenixcontact.com/us/products/1674862>

Please be informed that the data shown in this PDF document is generated from our online catalog. Please find the complete data in the user documentation. Our general terms of use for downloads are valid.



Crimp contact, series: HC-M-06, Socket, turned, contact diameter: 2.5 mm, connection cross section: 2.5 mm<sup>2</sup> ... 2.5 mm<sup>2</sup>, AWG 14...14 , contact material: Cu alloy

## Commercial data

Item number	1674862
Packing unit	100 pc
Minimum order quantity	100 pc
Sales key	BF65
Product key	AF7AID
GTIN	4017918135560
Weight per piece (including packing)	1.58 g
Weight per piece (excluding packing)	1.58 g
Customs tariff number	85366990
Country of origin	DE

# CK2,5-ED-2,50BU AU - Crimp contact



1674862

<https://www.phoenixcontact.com/us/products/1674862>

## Technical data

### Notes

General	for HC-M-06..., HC-M-HV-, HC-M-08-, HC-M-20-, HC-A..., HC-B.., HC-BB..., HC-BBB..., and HC-HV contact carriers
Assembly note	The quality of a crimp connection is determined by DIN EN 60352-2.
Assembly note	For voltages less than 5 V and currents less than 5 mA, gold-plated contacts are recommended.

### Product properties

Product type	Crimp contact
Series	HC-M-06
	HC-M-HV
	HC-M-08
	HC-A
	HC-BB
	HC-B
	HC-HV
	HC-M-20
	HC-K
	HC-BBB
	HC-Q
	HC-COM
HC-M-EMV	
Contact material type	turned

### Connection data

#### Connection technology

Contact connection type	Socket
Connection method	Crimp connection

#### Conductor connection

Stripping length	7.5 mm (9.5 mm at HC-M-HV...)
Connection cross section	2.5 mm <sup>2</sup> ... 2.5 mm <sup>2</sup>
Connection cross section AWG	14 ... 14

### Material specifications

Material Contact	Cu alloy
Material Contact surface	Au

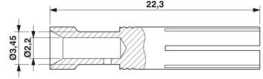
### Dimensions

# CK2,5-ED-2,50BU AU - Crimp contact



1674862

<https://www.phoenixcontact.com/us/products/1674862>

Dimensional drawing	
Diameter (Contact diameter)	2.5 mm

## Mechanical properties

### Mechanical data

Insertion/withdrawal cycles	≥ 500
-----------------------------	-------

## Environmental and real-life conditions

### Ambient conditions

Ambient temperature (operation)	-40 °C ... 125 °C
---------------------------------	-------------------

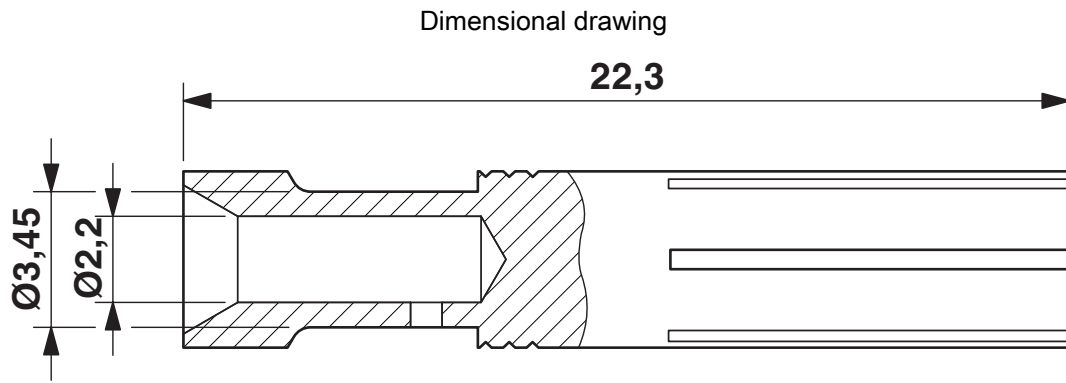
# CK2,5-ED-2,50BU AU - Crimp contact



1674862

<https://www.phoenixcontact.com/us/products/1674862>

## Drawings



Dimensional drawing

# CK2,5-ED-2,50BU AU - Crimp contact



1674862

<https://www.phoenixcontact.com/us/products/1674862>

## Approvals

To download certificates, visit the product detail page: <https://www.phoenixcontact.com/us/products/1674862>



**EAC**

Approval ID: RU C-DE.AI30.B.01102

# CK2,5-ED-2,50BU AU - Crimp contact



1674862

<https://www.phoenixcontact.com/us/products/1674862>

## Classifications

### ECLASS

ECLASS-13.0	27440204
ECLASS-15.0	27440204

### ETIM

ETIM 10.0	EC000796
-----------	----------

### UNSPSC

UNSPSC 21.0	39121500
-------------	----------

# CK2,5-ED-2,50BU AU - Crimp contact



1674862

<https://www.phoenixcontact.com/us/products/1674862>

## Environmental product compliance

### EU RoHS

Fulfills EU RoHS substance requirements	Yes, No exemptions
---	--------------------

### China RoHS

Environment friendly use period (EFUP)	EFUP-E
	No hazardous substances above the limits

### EU REACH SVHC

REACH candidate substance (CAS No.)	No substance above 0.1 wt%
-------------------------------------	----------------------------

Phoenix Contact 2026 © - all rights reserved  
<https://www.phoenixcontact.com>

Phoenix Contact USA  
586 Fulling Mill Road  
Middletown, PA 17057, United States  
(+717) 944-1300  
[info@phoenixcon.com](mailto:info@phoenixcon.com)