

# HC-B 16-A-DT-PER-F - Terminal adapter

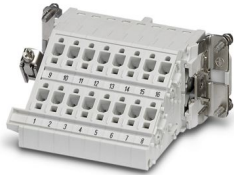


1648458

<https://www.phoenixcontact.com/us/products/1648458>

Please be informed that the data shown in this PDF document is generated from our online catalog. Please find the complete data in the user documentation. Our general terms of use for downloads are valid.

HEAVYCON terminal adapter socket insert, B16 series, 16-pos., for the right side of the control cabinet, push-in connection



## Your advantages

- Easy installation without tools, even when mounted, with push-in connection technology
- Shortest installation time compared to other connection technologies
- Quick and effortless wiring, in particular when space is tight
- Automatic cabling with robots possible
- Safe wiring and operation with color-coded actuators
- Shock and vibration-resistant in accordance with DIN EN 61373

## Commercial data

|                                      |               |
|--------------------------------------|---------------|
| Item number                          | 1648458       |
| Packing unit                         | 5 pc          |
| Minimum order quantity               | 5 pc          |
| Sales key                            | BF61          |
| Product key                          | AF7ADC        |
| GTIN                                 | 4046356092173 |
| Weight per piece (including packing) | 134.58 g      |
| Weight per piece (excluding packing) | 133.06 g      |
| Customs tariff number                | 85366990      |
| Country of origin                    | CN            |

# HC-B 16-A-DT-PER-F - Terminal adapter

1648458

<https://www.phoenixcontact.com/us/products/1648458>

## Technical data

### Product properties

|                     |                  |
|---------------------|------------------|
| Product type        | Terminal adapter |
| Product family      | HC-B             |
| Series              | HC-B             |
| Type                | B16              |
| Number of positions | 16               |
| Connection profile  | 16+PE            |
| Contact numbering   | 1 - 16           |

### Insulation characteristics

|                      |     |
|----------------------|-----|
| Overvoltage category | III |
| Degree of pollution  | 3   |

### Electrical properties

|                       |                |
|-----------------------|----------------|
| Rated voltage (III/3) | 500 V          |
| Rated surge voltage   | 6 kV           |
| Rated current         | 16 A           |
| SCCR                  | 5 kA (UL 2237) |

### Connection data

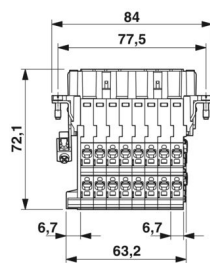
#### Connection technology

|                       |                    |
|-----------------------|--------------------|
| Connection technology | Push-in connection |
|-----------------------|--------------------|

#### Conductor connection

|   |   |
|---|---|
| Conductor cross-section                 | 0.5 mm <sup>2</sup> ... 2.5 mm <sup>2</sup> |
| Connection cross section AWG            | 20 ... 12                                   |
| Stripping length of the individual wire | 10 mm (13 mm with ferrule)                  |

### Dimensions

|                                 |  |
|---------------------------------|--|
| Dimensional drawing             |  |
| Width                           | 34 mm  |
| Height                          | 72.1 mm  |
| Length                          | 84 mm  |
| Drill hole distance, horizontal | 77.5 mm  |
| Drill hole distance, vertical   | 27 mm  |

# HC-B 16-A-DT-PER-F - Terminal adapter



1648458

<https://www.phoenixcontact.com/us/products/1648458>

## Material specifications

|  |              |
|--|--------------|
| Flammability rating according to UL 94 | V0           |
| Contact material                       | Copper alloy |
| Contact surface material               | Ag           |
| Contact carrier material               | PA           |
| Standards/regulations                  | PA           |

## Cable/line

|   |                            |
|---|----------------------------|
| Stripping length of the individual wire | 10 mm (13 mm with ferrule) |
|---|----------------------------|

## Mechanical properties

### Mechanical data

|                             |       |
|-----------------------------|-------|
| Insertion/withdrawal cycles | ≥ 500 |
|-----------------------------|-------|

## Environmental and real-life conditions

### Ambient conditions

|                                 |                   |
|---------------------------------|-------------------|
| Degree of protection            | IP20              |
| Ambient temperature (operation) | -40 °C ... 125 °C |

## Standards and regulations

|  |              |
|--|--------------|
| Constructional and testing regulations | DIN EN 61984 |
|  | DIN EN 60664 |
|  | IEC 60352    |
| Tests                                  | DIN EN 61984 |
|  | DIN EN 60664 |
|  | IEC 60352    |

### Testing

|                       |   |
|-----------------------|---|
| Standards/regulations | PA: Fire protection in rail vehicles - requirement sets R22, R23, and R24 acc. to DIN EN 45545-2 (Risk level HL1 - HL3) |
|-----------------------|---|

## Mounting

|               |   |
|---------------|---|
| Assembly note | To ensure correct use, installation in housing with IP54 protection or better is required |
|               | Connectors may be plugged in only when there is no load/voltage.                          |

# HC-B 16-A-DT-PER-F - Terminal adapter

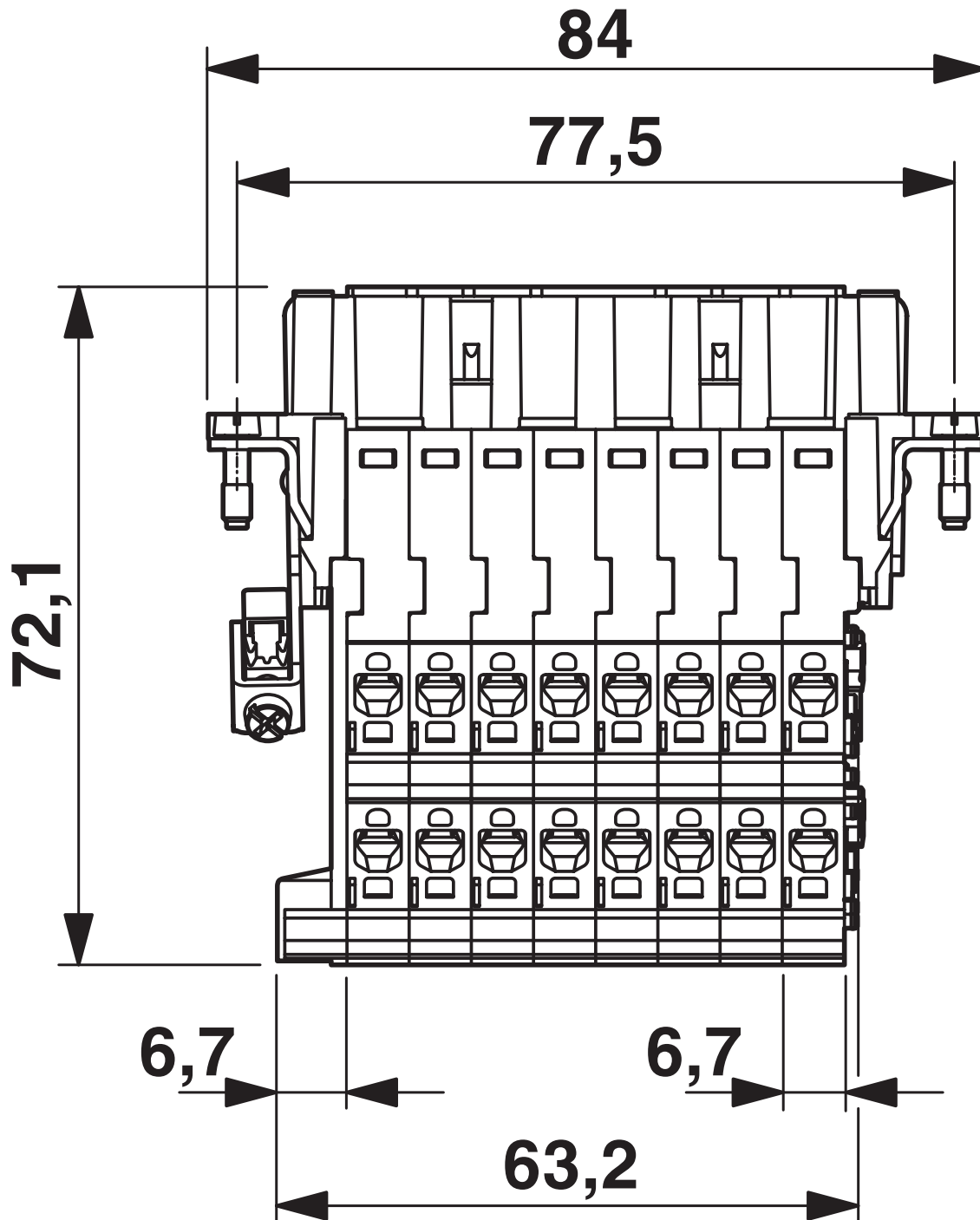


1648458

<https://www.phoenixcontact.com/us/products/1648458>

## Drawings

Dimensional drawing



Dimensional drawing

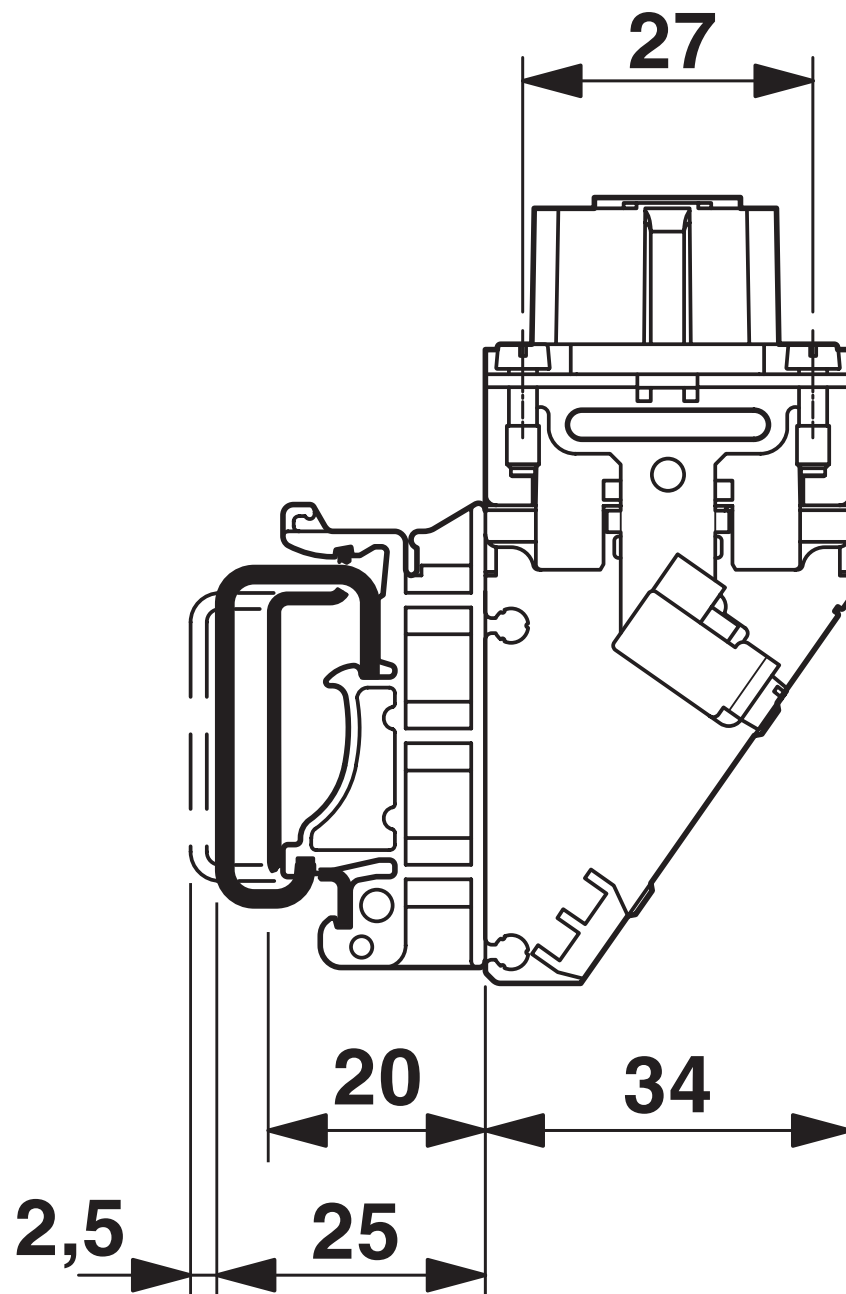
# HC-B 16-A-DT-PER-F - Terminal adapter



1648458

<https://www.phoenixcontact.com/us/products/1648458>

Dimensional drawing



Dimensional drawing, side view

# HC-B 16-A-DT-PER-F - Terminal adapter

1648458

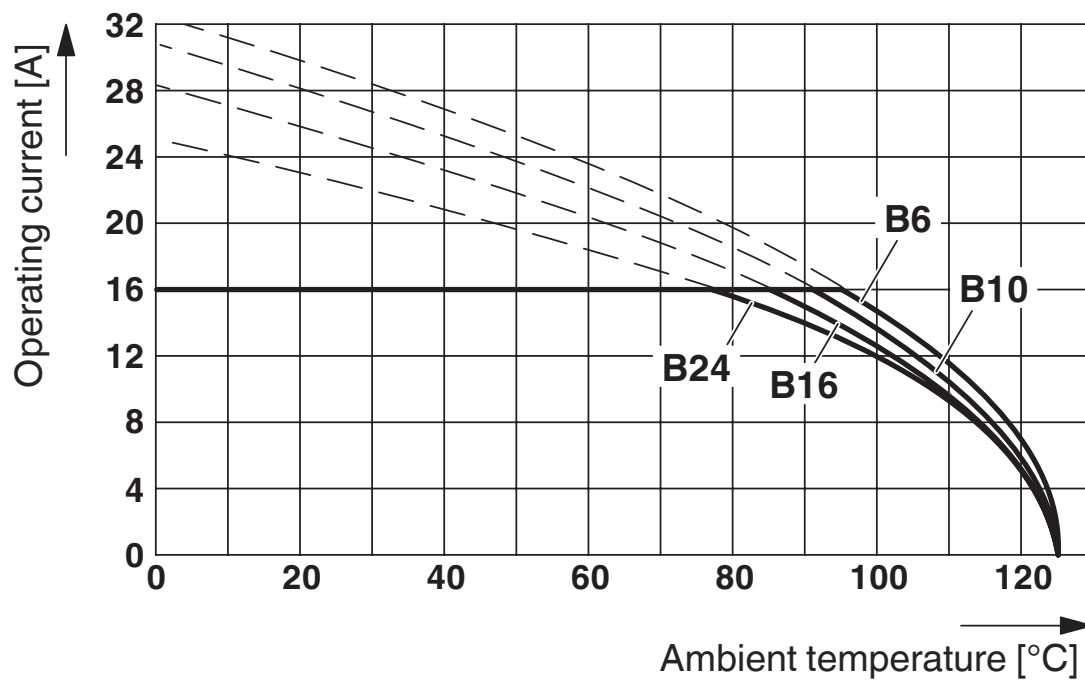
<https://www.phoenixcontact.com/us/products/1648458>

Application drawing



Mounting position PE connection left/right (PEL/PER)

Diagram



Derating diagram

# HC-B 16-A-DT-PER-F - Terminal adapter




1648458

<https://www.phoenixcontact.com/us/products/1648458>


## Approvals

To download certificates, visit the product detail page: <https://www.phoenixcontact.com/us/products/1648458>

|  <b>CSA</b><br>Approval ID: 013631_6233_01 |                       |                       |                   |                             |
|---|-----------------------|-----------------------|-------------------|-----------------------------|
|   | Nominal voltage $U_N$ | Nominal current $I_N$ | Cross section AWG | Cross section $\text{mm}^2$ |
| keine   |                       |                       |                   |                             |
|   | 600 V                 | 13 A                  | 22 - 14           | -                           |

|  <b>cUL Recognized</b><br>Approval ID: E118976 |                       |                       |                   |                             |
|---|-----------------------|-----------------------|-------------------|-----------------------------|
|   | Nominal voltage $U_N$ | Nominal current $I_N$ | Cross section AWG | Cross section $\text{mm}^2$ |
| keine   |                       |                       |                   |                             |
|   | 600 V                 | 13 A                  | 22 - 14           | -                           |

|  <b>UL Recognized</b><br>Approval ID: E118976 |                       |                       |                   |                             |
|--|-----------------------|-----------------------|-------------------|-----------------------------|
|  | Nominal voltage $U_N$ | Nominal current $I_N$ | Cross section AWG | Cross section $\text{mm}^2$ |
| keine  |                       |                       |                   |                             |
|  | 600 V                 | 13 A                  | 22 - 14           | -                           |

|  <b>cULus Recognized</b><br>Approval ID: E468743 |                       |                       |                   |                             |
|---|-----------------------|-----------------------|-------------------|-----------------------------|
|   | Nominal voltage $U_N$ | Nominal current $I_N$ | Cross section AWG | Cross section $\text{mm}^2$ |
| keine   |                       |                       |                   |                             |
|   | 600 V                 | 13 A                  | - 14              | -                           |

# HC-B 16-A-DT-PER-F - Terminal adapter



1648458

<https://www.phoenixcontact.com/us/products/1648458>

## Classifications

### ECLASS

|             |          |
|-------------|----------|
| ECLASS-13.0 | 27440222 |
| ECLASS-15.0 | 27440222 |

### ETIM

|           |          |
|-----------|----------|
| ETIM 10.0 | EC000438 |
|-----------|----------|

### UNSPSC

|             |          |
|-------------|----------|
| UNSPSC 21.0 | 39121500 |
|-------------|----------|

# HC-B 16-A-DT-PER-F - Terminal adapter



1648458

<https://www.phoenixcontact.com/us/products/1648458>

## Environmental product compliance

### EU RoHS

|   |                    |
|---|--------------------|
| Fulfills EU RoHS substance requirements | Yes, No exemptions |
|---|--------------------|

### China RoHS

|  |  |
|--|--|
| Environment friendly use period (EFUP) | EFUP-E                                   |
|  | No hazardous substances above the limits |

### EU REACH SVHC

|                                     |                            |
|-------------------------------------|----------------------------|
| REACH candidate substance (CAS No.) | No substance above 0.1 wt% |
|-------------------------------------|----------------------------|

Phoenix Contact 2026 © - all rights reserved  
<https://www.phoenixcontact.com>

Phoenix Contact USA  
586 Fulling Mill Road  
Middletown, PA 17057, United States  
(+717) 944-1300  
[info@phoenixcon.com](mailto:info@phoenixcon.com)