

# RC-63P1N12T00N - Cable connector



1624177

<https://www.phoenixcontact.com/us/products/1624177>

Please be informed that the data shown in this PDF document is generated from our online catalog. Please find the complete data in the user documentation. Our general terms of use for downloads are valid.

M23, Cable connector, application: Signal, series: RC, angled, shielded: yes, Screw locking mechanism, No. of pos.: 6+3, Direction of rotation: Standard, contact connection type: Pin, Solder cup, cable diameter range: 4.5 mm ... 5.5 mm, coding: N



The figure shows the 12-pos. product version

## Commercial data

Item number	1624177
Packing unit	8 pc
Minimum order quantity	1 pc
Note	Made to order (non-returnable)
Product key	ABRAFC
GTIN	4046356621786
Weight per piece (including packing)	142.11 g
Weight per piece (excluding packing)	142.11 g
Country of origin	DE

# RC-63P1N12T00N - Cable connector



1624177

<https://www.phoenixcontact.com/us/products/1624177>

## Technical data

### Product properties

Product type	Circular connector (cable-side)
--------------	---------------------------------

### Connector

#### Insulating body

Coding	N
Material (Insulating body)	PBT
Material (Contact)	CuZn
Material (Contact surface)	Ni/Au
Insertion/withdrawal cycles	50
Connection method	Solder cup
Contact switching type	Pin
Application	Signal
Number of positions	9
Direction of rotation	Standard
Connection profile	6+3
Number (Contact group 1)	3
Contact diameter (Contact group 1)	2 mm
Litz wires Min. cross section (Contact group 1)	0.08 mm <sup>2</sup>
Litz wires Max. cross section (Contact group 1)	2.5 mm <sup>2</sup>
Rated current Contact (Contact group 1)	20 A (for max. connection cross section)
Rated voltage Contact (Contact group 1)	48 V AC 74 V DC
Rated surge voltage	1.5 kV
Overvoltage category	III
Degree of pollution	3
Number (Contact group 2)	6
Contact diameter (Contact group 2)	1 mm
Litz wires Max. cross section (Contact group 2)	1 mm <sup>2</sup>
Rated current Contact (Contact group 2)	8 A

#### Housing

Type	Cable connector housing
Thread type	M23
Design	angled
Type of locking	Screw locking mechanism
Pg screw connection	none
Material (Housing)	GD-Zn
Material (Rotating parts)	CuZn
Material (Housing surface)	Ni
Material (Seal)	FPM (O-ring)

# RC-63P1N12T00N - Cable connector



1624177

<https://www.phoenixcontact.com/us/products/1624177>

Degree of protection (plugged in)	IP67
Seal	
External cable diameter	4.5 mm ... 5.5 mm
Seal material	NBR

# RC-63P1N12T00N - Cable connector

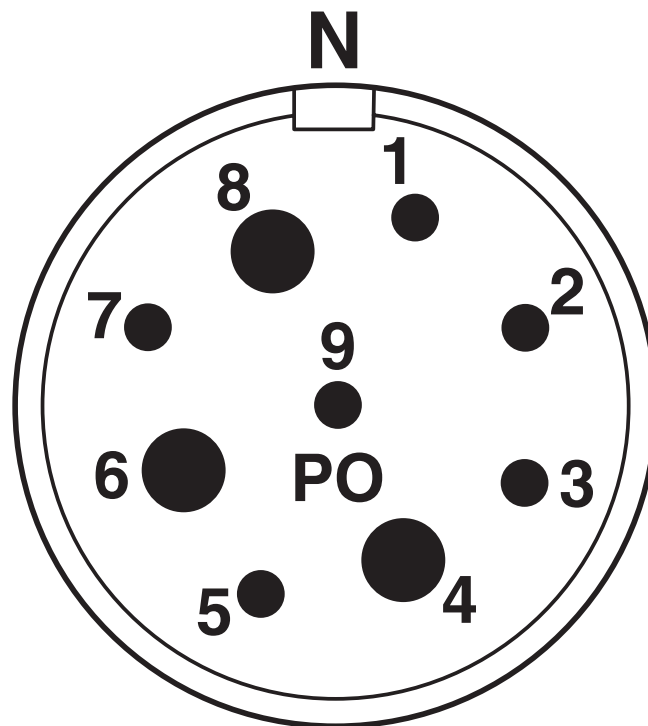


1624177

<https://www.phoenixcontact.com/us/products/1624177>

## Drawings

Schematic diagram



Connector pin assignment

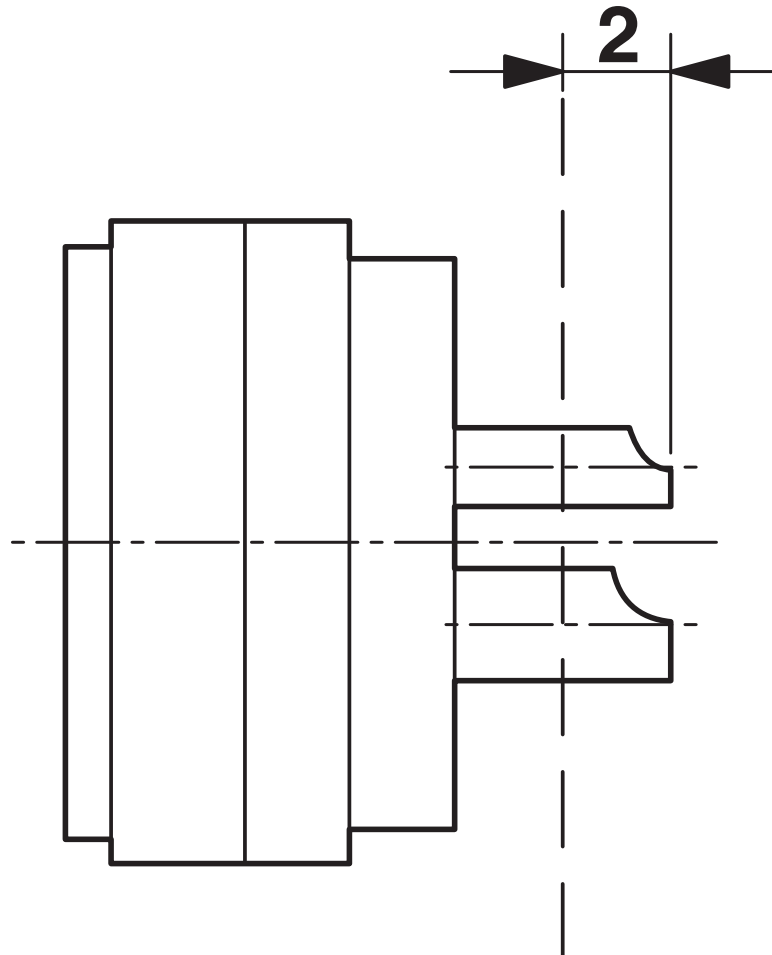
# RC-63P1N12T00N - Cable connector



1624177

<https://www.phoenixcontact.com/us/products/1624177>

Schematic diagram



Dimensional drawing

Phoenix Contact 2026 © - all rights reserved  
<https://www.phoenixcontact.com>

Phoenix Contact USA  
586 Fulling Mill Road  
Middletown, PA 17057, United States  
(+717) 944-1300  
[info@phoenixcon.com](mailto:info@phoenixcon.com)