

RC-17S2N121000 - Cable connector



1616948

<https://www.phoenixcontact.com/us/products/1616948>

Please be informed that the data shown in this PDF document is generated from our online catalog. Please find the complete data in the user documentation. Our general terms of use for downloads are valid.



The figure shows the 12-pos. product version, with standard DIN cable gland

M23, Cable connector, application: Signal, series: RC, straight, shielded: no, Screw locking mechanism, No. of pos.: 17, Direction of rotation: Counter direction, contact connection type: Socket, Solder cup, coding: N

Commercial data

Item number	1616948
Packing unit	20 pc
Minimum order quantity	1 pc
Note	Made to order (non-returnable)
Product key	ABRAFA
GTIN	4046356619608
Weight per piece (including packing)	76.23 g
Weight per piece (excluding packing)	76.23 g
Country of origin	DE

RC-17S2N121000 - Cable connector



1616948

<https://www.phoenixcontact.com/us/products/1616948>

Technical data

Product properties

Product type	Circular connector (cable-side)
Type of the screw connection	-
Pg screw connection	none

Mechanical properties

Mechanical data

Type of the screw connection	-
------------------------------	---

Connector

Insulating body

Coding	N
Material (Insulating body)	PBT
Material (Contact)	CuZn
Material (Contact surface)	Ni/Au
Insertion/withdrawal cycles	50
Connection method	Solder cup
Contact switching type	Socket
Application	Signal
Number of positions	17
Direction of rotation	Counter direction
Connection profile	17
Number (Contact group 1)	17
Contact diameter (Contact group 1)	1 mm
Litz wires Min. cross section (Contact group 1)	0.08 mm ²
Litz wires Max. cross section (Contact group 1)	1 mm ²
Rated current Contact (Contact group 1)	8 A (for max. connection cross section)
Rated voltage Contact (Contact group 1)	48 V AC 74 V DC
Rated surge voltage	1.5 kV
Overvoltage category	III
Degree of pollution	3

Housing

Type	Cable connector housing
Thread type	M23
Design	straight
Type of locking	Screw locking mechanism
Pg screw connection	none
Material (Housing)	Metal
Degree of protection (plugged in)	IP65

RC-17S2N121000 - Cable connector



1616948

<https://www.phoenixcontact.com/us/products/1616948>

IP67

RC-17S2N121000 - Cable connector

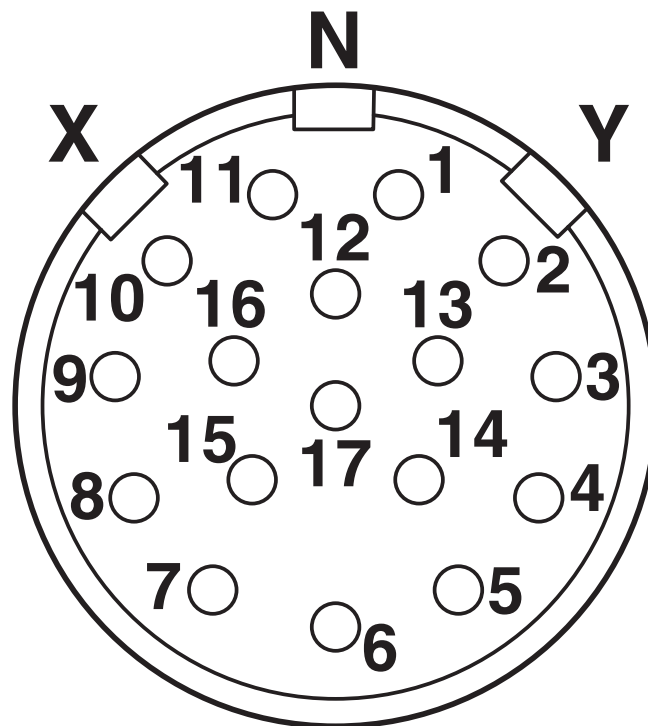


1616948

<https://www.phoenixcontact.com/us/products/1616948>

Drawings

Schematic diagram



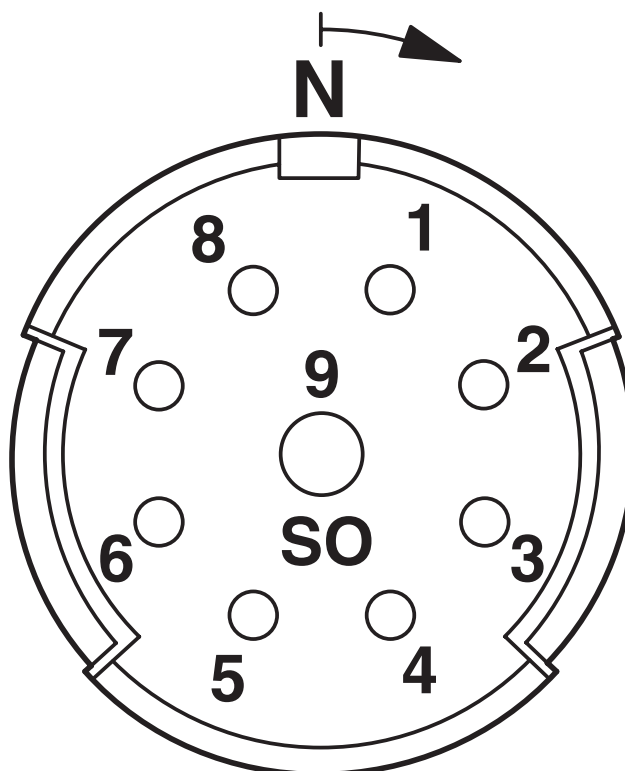
Connector pin assignment

RC-17S2N121000 - Cable connector

1616948

<https://www.phoenixcontact.com/us/products/1616948>

Schematic diagram



Connector pin assignment

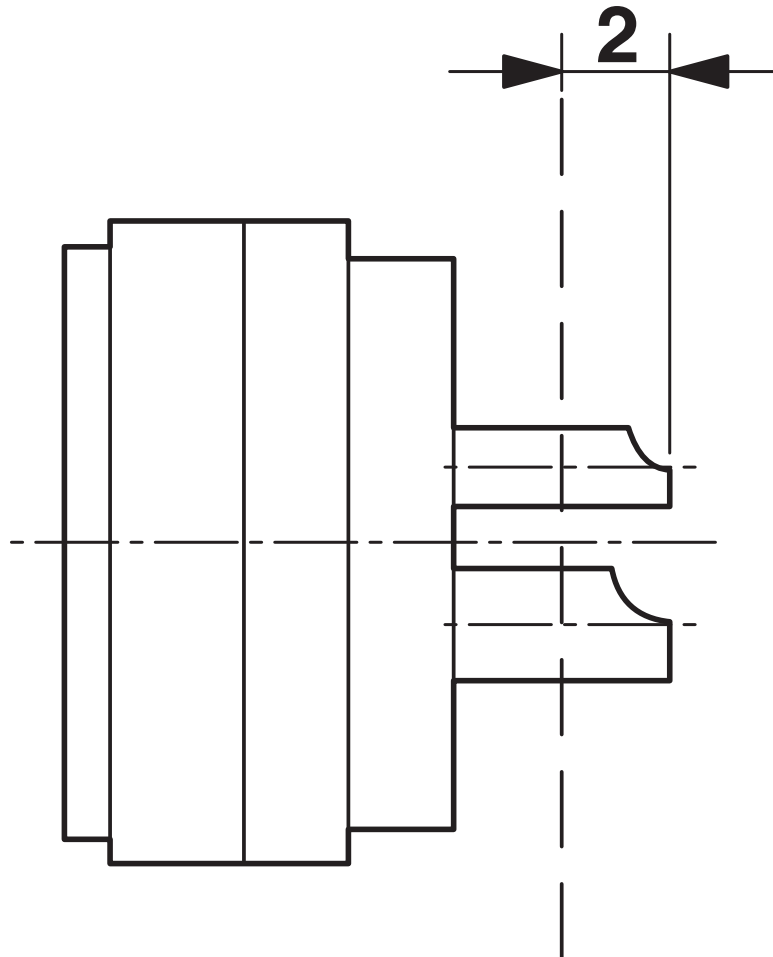
RC-17S2N121000 - Cable connector



1616948

<https://www.phoenixcontact.com/us/products/1616948>

Schematic diagram



Dimensional drawing

Phoenix Contact 2026 © - all rights reserved
<https://www.phoenixcontact.com>

Phoenix Contact USA
586 Fulling Mill Road
Middletown, PA 17057, United States
(+717) 944-1300
info@phoenixcon.com