

RC-19S1N12Z3TBL - Cable connector



1611510

<https://www.phoenixcontact.com/us/products/1611510>

Please be informed that the data shown in this PDF document is generated from our online catalog. Please find the complete data in the user documentation. Our general terms of use for downloads are valid.



M23, Cable connector, application: Signal, series: RC, angled, shielded: no, Screw locking mechanism, No. of pos.: 16+3, Direction of rotation: Standard, contact connection type: Socket, Solder cup, coding: N. This product is in the process of being discontinued. This product must no longer be considered for new projects. Please contact your sales representative for alternatives.

Commercial data

Item number	1611510
Packing unit	10 pc
Minimum order quantity	1 pc
Note	Made to order (non-returnable)
Product key	ABRAFC
GTIN	4046356266642
Weight per piece (including packing)	141.09 g
Weight per piece (excluding packing)	132.337 g
Country of origin	DE

RC-19S1N12Z3TBL - Cable connector



1611510

<https://www.phoenixcontact.com/us/products/1611510>

Technical data

Product properties

Product type	Circular connector (cable-side)
--------------	---------------------------------

Material specifications

Flammability rating according to UL 94	V0
--	----

Connector

Insulating body

Coding	N
Material (Insulating body)	PA 6.6
Material (Contact)	CuZn
Material (Contact surface)	Ni/Au
Insertion/withdrawal cycles	100
Connection method	Solder cup
Contact switching type	Socket
Application	Signal
Number of positions	19
Direction of rotation	Standard
Connection profile	16+3
Number (Contact group 1)	3
Contact diameter (Contact group 1)	1.5 mm
Litz wires Min. cross section (Contact group 1)	0.08 mm ²
Litz wires Max. cross section (Contact group 1)	1 mm ²
Rated current Contact (Contact group 1)	10 A (for max. connection cross section)
Rated voltage Contact (Contact group 1)	48 V AC 74 V DC
Rated surge voltage	1.5 kV
Overvoltage category	III
Degree of pollution	3
Number (Contact group 2)	16
Contact diameter (Contact group 2)	1 mm
Litz wires Max. cross section (Contact group 2)	1 mm ²
Rated current Contact (Contact group 2)	8 A
Number (Contact group 3)	1
Contact diameter (Contact group 3)	1.5 mm
Rated current Contact (Contact group 3)	8 A

Housing

Order information:	Order contact inserts and cable clamping separately
Type	Cable connector housing
Thread type	M23

RC-19S1N12Z3TBL - Cable connector



1611510

<https://www.phoenixcontact.com/us/products/1611510>

Design	angled
Type of locking	Screw locking mechanism
Pg screw connection	Pg13,5
Material (Housing)	GD-Zn
Material (Housing surface)	Ni
Material (Rotating parts)	CuZn
Degree of protection (plugged in)	IP65
	IP67

RC-19S1N12Z3TBL - Cable connector



1611510

<https://www.phoenixcontact.com/us/products/1611510>

Drawings

Schematic diagram



Connector pin assignment

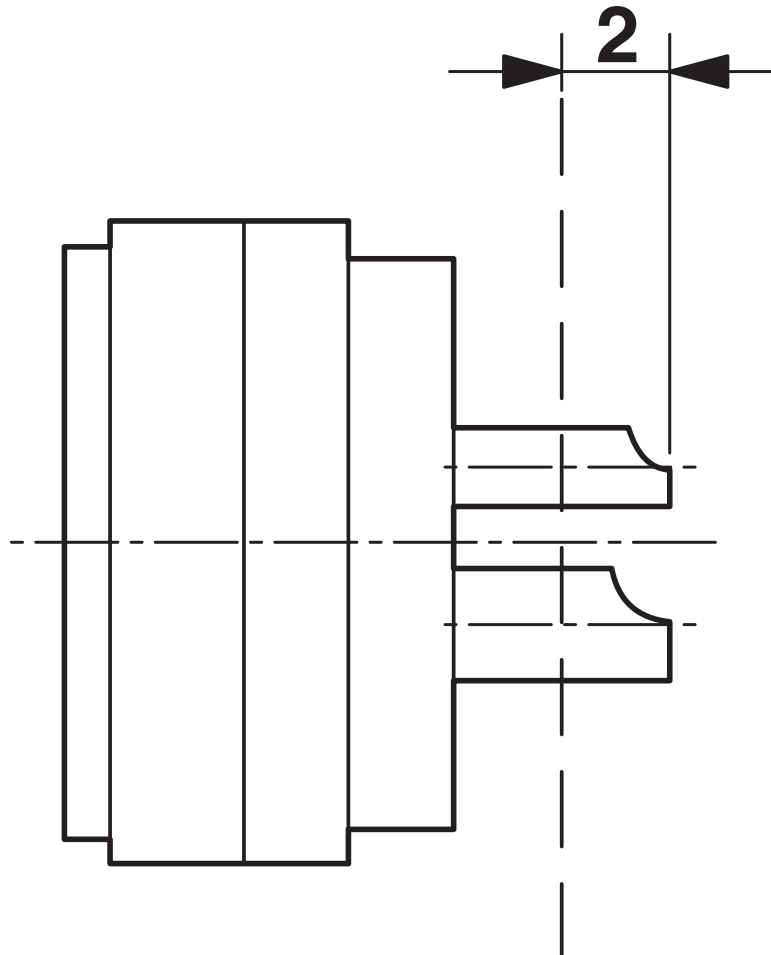
RC-19S1N12Z3TBL - Cable connector



1611510

<https://www.phoenixcontact.com/us/products/1611510>

Schematic diagram



Dimensional drawing

RC-19S1N12Z3TBL - Cable connector



1611510

<https://www.phoenixcontact.com/us/products/1611510>

Classifications

ECLASS

ECLASS-13.0	27440116
ECLASS-15.0	27440116

ETIM

ETIM 10.0	EC002635
-----------	----------

UNSPSC

UNSPSC 21.0	39121400
-------------	----------

RC-19S1N12Z3TBL - Cable connector



1611510

<https://www.phoenixcontact.com/us/products/1611510>

Environmental product compliance

EU RoHS

Fulfills EU RoHS substance requirements	Yes
Exemption	6(c)

China RoHS

Environment friendly use period (EFUP)	EFUP-50
	An article-related China RoHS declaration table can be found in the download area for the respective article under "Manufacturer declaration". For all articles with EFUP-E, no China RoHS declaration table issued and required.

EU REACH SVHC

REACH candidate substance (CAS No.)	Lead(CAS: 7439-92-1)
SCIP	3b79e776-20f2-47c0-90fc-63f7623635fe

Phoenix Contact 2026 © - all rights reserved

<https://www.phoenixcontact.com>

Phoenix Contact USA
586 Fulling Mill Road
Middletown, PA 17057, United States
(+717) 944-1300
info@phoenixcon.com