

RC-09P1N12T0EP - Cable connector



1610433

<https://www.phoenixcontact.com/us/products/1610433>

Please be informed that the data shown in this PDF document is generated from our online catalog. Please find the complete data in the user documentation. Our general terms of use for downloads are valid.

M23, Cable connector, application: Signal, series: RC, angled, shielded: yes, Screw locking mechanism, No. of pos.: 8+1, Direction of rotation: Standard, contact connection type: Pin, Solder cup, cable diameter range: 3 mm ... 10.5 mm, coding: N



The figure shows the 12-pos.
product version

Commercial data

Item number	1610433
Packing unit	8 pc
Minimum order quantity	1 pc
Note	Made to order (non-returnable)
Product key	ABRAFC
GTIN	4046356391917
Weight per piece (including packing)	157.16 g
Weight per piece (excluding packing)	140.67 g
Country of origin	DE

RC-09P1N12T0EP - Cable connector



1610433

<https://www.phoenixcontact.com/us/products/1610433>

Technical data

Product properties

Product type	Circular connector (cable-side)
--------------	---------------------------------

Connector

Insulating body

Coding	N
Material (Insulating body)	PBT
Material (Contact)	CuZn
Material (Contact surface)	Ni/Au
Insertion/withdrawal cycles	50
Connection method	Solder cup
Contact switching type	Pin
Application	Signal
Number of positions	9
Direction of rotation	Standard
Connection profile	8+1
Number (Contact group 1)	1
Contact diameter (Contact group 1)	2 mm
Litz wires Min. cross section (Contact group 1)	0.08 mm ²
Litz wires Max. cross section (Contact group 1)	2.5 mm ²
Rated current Contact (Contact group 1)	20 A (for max. connection cross section)
Rated voltage Contact (Contact group 1)	48 V AC 74 V DC
Rated surge voltage	1.5 kV
Overvoltage category	III
Degree of pollution	3
Number (Contact group 2)	8
Contact diameter (Contact group 2)	1 mm
Litz wires Max. cross section (Contact group 2)	1 mm ²
Rated current Contact (Contact group 2)	8 A
Rated voltage Contact (Contact group 2)	48 V AC 48 V AC

Housing

Type	Cable connector housing
Thread type	M23
Design	angled
Type of locking	Screw locking mechanism
Pg screw connection	none
Material (Housing)	GD-Zn
Material (Rotating parts)	CuZn

RC-09P1N12T0EP - Cable connector



1610433

<https://www.phoenixcontact.com/us/products/1610433>

Material (Housing surface)	Ni
Material (Seal)	FPM (O-ring)
Degree of protection (plugged in)	IP67

Seal

External cable diameter	3 mm ... 10.5 mm
Seal material	NBR

RC-09P1N12T0EP - Cable connector



1610433

<https://www.phoenixcontact.com/us/products/1610433>

Drawings

Schematic diagram



Connector pin assignment

RC-09P1N12T0EP - Cable connector

1610433

<https://www.phoenixcontact.com/us/products/1610433>

Schematic diagram



Connector pin assignment

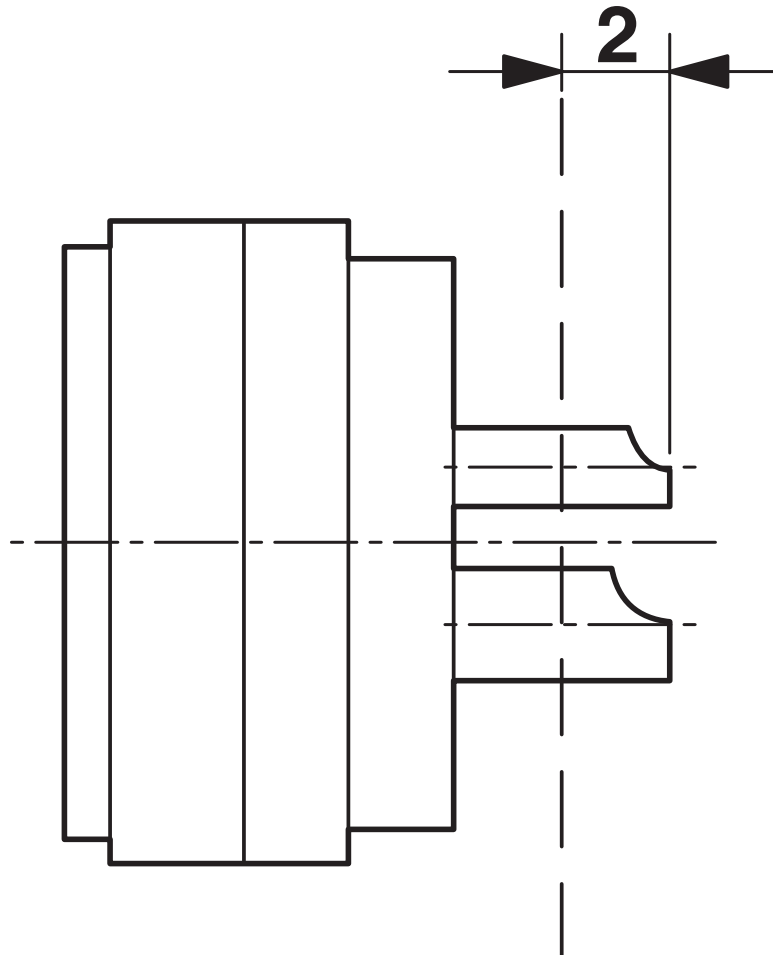
RC-09P1N12T0EP - Cable connector



1610433

<https://www.phoenixcontact.com/us/products/1610433>

Schematic diagram



Dimensional drawing

Phoenix Contact 2026 © - all rights reserved
<https://www.phoenixcontact.com>

Phoenix Contact USA
586 Fulling Mill Road
Middletown, PA 17057, United States
(+717) 944-1300
info@phoenixcon.com