

# RC-19S1N12Z3ES - Cable connector



1602936

<https://www.phoenixcontact.com/us/products/1602936>

Please be informed that the data shown in this PDF document is generated from our online catalog. Please find the complete data in the user documentation. Our general terms of use for downloads are valid.



M23, Cable connector, application: Signal, series: RC, angled, shielded: no, Screw locking mechanism, No. of pos.: 16+3, Direction of rotation: Standard, contact connection type: Socket, Solder cup, coding: N

## Commercial data

Item number	1602936
Packing unit	8 pc
Minimum order quantity	1 pc
Note	Made to order (non-returnable)
Product key	ABRAFC
GTIN	4046356242455
Weight per piece (including packing)	135.5 g
Weight per piece (excluding packing)	132.337 g
Country of origin	DE

# RC-19S1N12Z3ES - Cable connector



1602936

<https://www.phoenixcontact.com/us/products/1602936>

## Technical data

### Product properties

Product type	Circular connector (cable-side)
Thread type	M23

### Material specifications

Flammability rating according to UL 94	V0
--	----

### Connector

#### Insulating body

Coding	N
Material (Insulating body)	PA 6.6
Material (Contact)	CuZn
Material (Contact surface)	Ni/Au
Insertion/withdrawal cycles	100
Connection method	Solder cup
Contact switching type	Socket
Application	Signal
Number of positions	19
Direction of rotation	Standard
Connection profile	16+3
Number (Contact group 1)	3
Contact diameter (Contact group 1)	1.5 mm
Litz wires Min. cross section (Contact group 1)	0.08 mm <sup>2</sup>
Litz wires Max. cross section (Contact group 1)	1 mm <sup>2</sup>
Rated current Contact (Contact group 1)	10 A (for max. connection cross section)
Rated voltage Contact (Contact group 1)	48 V AC 74 V DC
Rated surge voltage	1.5 kV
Overvoltage category	III
Degree of pollution	3
Number (Contact group 2)	16
Contact diameter (Contact group 2)	1 mm
Litz wires Max. cross section (Contact group 2)	1 mm <sup>2</sup>
Rated current Contact (Contact group 2)	8 A
Number (Contact group 3)	1
Contact diameter (Contact group 3)	1.5 mm
Rated current Contact (Contact group 3)	8 A

#### Housing

Order information:	Order contact inserts and cable clamping separately
Type	Cable connector housing

# RC-19S1N12Z3ES - Cable connector



1602936

<https://www.phoenixcontact.com/us/products/1602936>

Thread type	M23
Design	angled
Type of locking	Screw locking mechanism
Pg screw connection	Pg13,5
Material (Housing)	GD-Zn
Material (Housing surface)	Ni
Material (Rotating parts)	CuZn
Degree of protection (plugged in)	IP65
	IP67

## Environmental and real-life conditions

### Ambient conditions

Degree of protection	IP67
----------------------	------

# RC-19S1N12Z3ES - Cable connector



1602936

<https://www.phoenixcontact.com/us/products/1602936>

## Drawings

Schematic diagram



Connector pin assignment

# RC-19S1N12Z3ES - Cable connector



1602936

<https://www.phoenixcontact.com/us/products/1602936>

Schematic diagram



Connector pin assignment

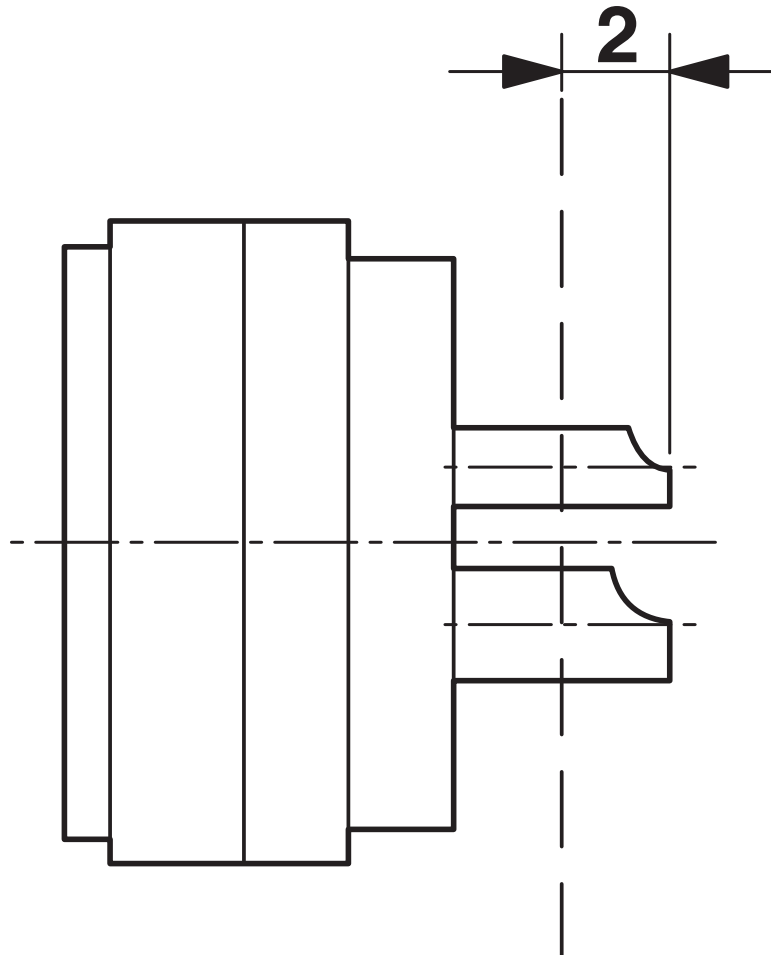
# RC-19S1N12Z3ES - Cable connector



1602936

<https://www.phoenixcontact.com/us/products/1602936>

Schematic diagram



Dimensional drawing

# RC-19S1N12Z3ES - Cable connector



1602936

<https://www.phoenixcontact.com/us/products/1602936>

## Classifications

### ECLASS

ECLASS-13.0	27440116
ECLASS-15.0	27440116

### ETIM

ETIM 10.0	EC002635
-----------	----------

### UNSPSC

UNSPSC 21.0	39121400
-------------	----------

# RC-19S1N12Z3ES - Cable connector



1602936

<https://www.phoenixcontact.com/us/products/1602936>

## Environmental product compliance

### EU RoHS

Fulfills EU RoHS substance requirements	Yes
Exemption	6(c)

### China RoHS

Environment friendly use period (EFUP)	EFUP-50
	An article-related China RoHS declaration table can be found in the download area for the respective article under "Manufacturer declaration". For all articles with EFUP-E, no China RoHS declaration table issued and required.

### EU REACH SVHC

REACH candidate substance (CAS No.)	Lead(CAS: 7439-92-1)
SCIP	e98466ec-7e8e-47aa-92f8-f27f8f5d71ab

Phoenix Contact 2026 © - all rights reserved

<https://www.phoenixcontact.com>

Phoenix Contact USA  
586 Fulling Mill Road  
Middletown, PA 17057, United States  
(+717) 944-1300  
[info@phoenixcon.com](mailto:info@phoenixcon.com)