

# RC-19S1N121I00 - Cable connector



1602781

<https://www.phoenixcontact.com/us/products/1602781>

Please be informed that the data shown in this PDF document is generated from our online catalog. Please find the complete data in the user documentation. Our general terms of use for downloads are valid.



The figure shows the 12-pos. product version, with standard DIN cable gland

M23, Cable connector, application: Signal, series: RC, straight, shielded: no, Screw locking mechanism, No. of pos.: 16+3, Direction of rotation: Standard, contact connection type: Socket, Solder cup, coding: N. This product is in the process of being discontinued. This product must no longer be considered for new projects. Please contact your sales representative for alternatives. Alternative products: 1341234

## Commercial data

Item number	1602781
Packing unit	20 pc
Minimum order quantity	1 pc
Product key	ABRAFA
GTIN	4046356241540
Weight per piece (including packing)	96.94 g
Weight per piece (excluding packing)	92.467 g
Country of origin	DE

# RC-19S1N121I00 - Cable connector



1602781

<https://www.phoenixcontact.com/us/products/1602781>

## Technical data

### Product properties

Product type	Circular connector (cable-side)
--------------	---------------------------------

### Connector

#### Insulating body

Coding	N
Material (Insulating body)	PA 6.6
Material (Contact)	CuZn
Material (Contact surface)	Ni/Au
Insertion/withdrawal cycles	100
Connection method	Solder cup
Contact switching type	Socket
Application	Signal
Number of positions	19
Direction of rotation	Standard
Connection profile	16+3
Number (Contact group 1)	3
Contact diameter (Contact group 1)	1.5 mm
Litz wires Min. cross section (Contact group 1)	0.08 mm <sup>2</sup>
Litz wires Max. cross section (Contact group 1)	1 mm <sup>2</sup>
Rated current Contact (Contact group 1)	10 A (for max. connection cross section)
Rated voltage Contact (Contact group 1)	48 V AC 74 V DC
Rated surge voltage	1.5 kV
Overvoltage category	III
Degree of pollution	3
Number (Contact group 2)	16
Contact diameter (Contact group 2)	1 mm
Litz wires Max. cross section (Contact group 2)	1 mm <sup>2</sup>
Rated current Contact (Contact group 2)	8 A
Number (Contact group 3)	1
Contact diameter (Contact group 3)	1.5 mm
Rated current Contact (Contact group 3)	8 A

#### Housing

Type	Cable connector housing
Thread type	M23
Design	straight
Type of locking	Screw locking mechanism
Pg screw connection	Pg9
Material (Housing)	GD-Zn

# RC-19S1N121I00 - Cable connector



1602781

<https://www.phoenixcontact.com/us/products/1602781>

Material (Housing surface)	Ni
Material (Rotating parts)	CuZn
Degree of protection (plugged in)	IP65
	IP67
	IP68

# RC-19S1N121I00 - Cable connector

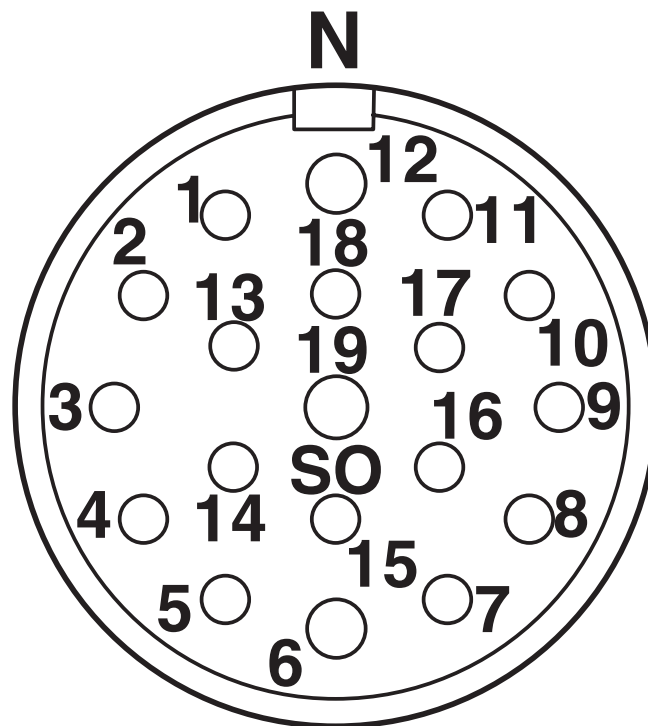


1602781

<https://www.phoenixcontact.com/us/products/1602781>

## Drawings

Schematic diagram



Connector pin assignment

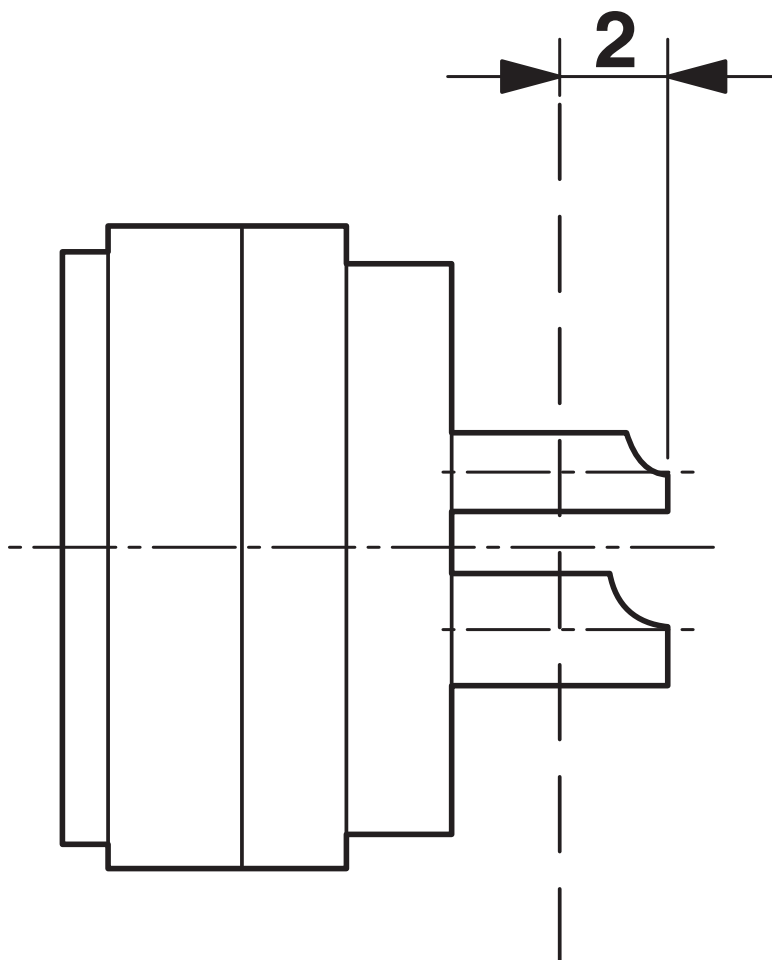
# RC-19S1N121I00 - Cable connector



1602781

<https://www.phoenixcontact.com/us/products/1602781>

Schematic diagram



Dimensional drawing

# RC-19S1N121I00 - Cable connector



1602781

<https://www.phoenixcontact.com/us/products/1602781>

## Classifications

### ECLASS

ECLASS-13.0	27440116
ECLASS-15.0	27440116

### ETIM

ETIM 10.0	EC002635
-----------	----------

### UNSPSC

UNSPSC 21.0	39121400
-------------	----------

# RC-19S1N121I00 - Cable connector



1602781

<https://www.phoenixcontact.com/us/products/1602781>

## Environmental product compliance

### EU RoHS

Fulfills EU RoHS substance requirements	Yes
Exemption	6(c)

### China RoHS

Environment friendly use period (EFUP)	EFUP-50
	An article-related China RoHS declaration table can be found in the download area for the respective article under "Manufacturer declaration". For all articles with EFUP-E, no China RoHS declaration table issued and required.

### EU REACH SVHC

REACH candidate substance (CAS No.)	Lead(CAS: 7439-92-1)
SCIP	4a2e8563-56bd-4505-9827-9662b543c193

Phoenix Contact 2026 © - all rights reserved  
<https://www.phoenixcontact.com>

Phoenix Contact USA  
586 Fulling Mill Road  
Middletown, PA 17057, United States  
(+717) 944-1300  
[info@phoenixcon.com](mailto:info@phoenixcon.com)