

# RC-19P1N12F6NY - Coupler connector



1602602

<https://www.phoenixcontact.com/us/products/1602602>

Please be informed that the data shown in this PDF document is generated from our online catalog. Please find the complete data in the user documentation. Our general terms of use for downloads are valid.



M23, Coupler connector, application: Signal, series: RC, straight, shielded: yes, Screw locking mechanism, No. of pos.: 16+3, Direction of rotation: Standard, contact connection type: Pin, Solder cup, coding: N

The figure shows the 12-pos. product version, with standard DIN cable gland

## Commercial data

Item number	1602602
Packing unit	20 pc
Minimum order quantity	1 pc
Note	Made to order (non-returnable)
Product key	ABRAFG
GTIN	4046356240598
Weight per piece (including packing)	102.8 g
Weight per piece (excluding packing)	99.17 g
Country of origin	DE

# RC-19P1N12F6NY - Coupler connector



1602602

<https://www.phoenixcontact.com/us/products/1602602>

## Technical data

### Product properties

Product type	Circular connector (cable-side)
Thread type	M23

### Material specifications

Flammability rating according to UL 94	V0
--	----

### Connector

#### Insulating body

Coding	N
Material (Insulating body)	PA 6.6
Material (Contact)	CuZn
Material (Contact surface)	Ni/Au
Insertion/withdrawal cycles	100
Connection method	Solder cup
Contact switching type	Pin
Application	Signal
Number of positions	19
Direction of rotation	Standard
Connection profile	16+3
Number (Contact group 1)	3
Contact diameter (Contact group 1)	1.5 mm
Litz wires Min. cross section (Contact group 1)	0.08 mm <sup>2</sup>
Litz wires Max. cross section (Contact group 1)	1 mm <sup>2</sup>
Rated current Contact (Contact group 1)	10 A (for max. connection cross section)
Rated voltage Contact (Contact group 1)	48 V AC 74 V DC
Rated surge voltage	1.5 kV
Overvoltage category	III
Degree of pollution	3
Number (Contact group 2)	16
Contact diameter (Contact group 2)	1 mm
Litz wires Max. cross section (Contact group 2)	1 mm <sup>2</sup>
Rated current Contact (Contact group 2)	8 A

#### Housing

Order information:	Order contact inserts and cable clamping/shield accessories separately
Type	Coupling housing
Thread type	M23
Design	straight
Type of locking	Screw locking mechanism

# RC-19P1N12F6NY - Coupler connector



1602602

<https://www.phoenixcontact.com/us/products/1602602>

Pg screw connection	none
Housing material	Metal
Degree of protection (plugged in)	IP67

## Environmental and real-life conditions

### Ambient conditions

Degree of protection	IP67
----------------------	------

# RC-19P1N12F6NY - Coupler connector



1602602

<https://www.phoenixcontact.com/us/products/1602602>

## Drawings

Schematic diagram



Connector pin assignment

# RC-19P1N12F6NY - Coupler connector

1602602

<https://www.phoenixcontact.com/us/products/1602602>

Schematic diagram



Connector pin assignment

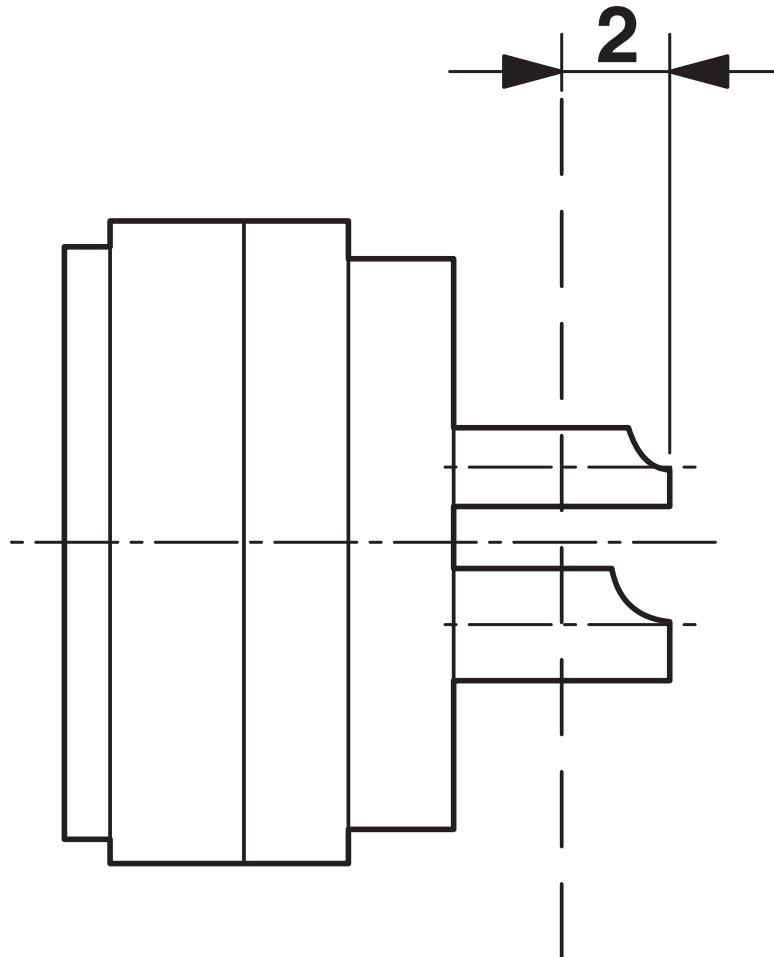
# RC-19P1N12F6NY - Coupler connector



1602602

<https://www.phoenixcontact.com/us/products/1602602>

Schematic diagram



Dimensional drawing

# RC-19P1N12F6NY - Coupler connector



1602602

<https://www.phoenixcontact.com/us/products/1602602>

## Classifications

### ECLASS

ECLASS-13.0	27440116
ECLASS-15.0	27440116

### ETIM

ETIM 10.0	EC002635
-----------	----------

### UNSPSC

UNSPSC 21.0	39121400
-------------	----------

# RC-19P1N12F6NY - Coupler connector



1602602

<https://www.phoenixcontact.com/us/products/1602602>

## Environmental product compliance

### EU RoHS

Fulfills EU RoHS substance requirements	Yes
Exemption	6(c)

### China RoHS

Environment friendly use period (EFUP)	EFUP-50
	An article-related China RoHS declaration table can be found in the download area for the respective article under "Manufacturer declaration". For all articles with EFUP-E, no China RoHS declaration table issued and required.

### EU REACH SVHC

REACH candidate substance (CAS No.)	Lead(CAS: 7439-92-1)
SCIP	33c60306-bb5e-4274-b647-6b40c7180d00

Phoenix Contact 2026 © - all rights reserved

<https://www.phoenixcontact.com>

Phoenix Contact USA  
586 Fulling Mill Road  
Middletown, PA 17057, United States  
(+717) 944-1300  
[info@phoenixcon.com](mailto:info@phoenixcon.com)