

RC-17S1N12C3K5 - Rear panel feed-through



1601951

<https://www.phoenixcontact.com/us/products/1601951>

Please be informed that the data shown in this PDF document is generated from our online catalog. Please find the complete data in the user documentation. Our general terms of use for downloads are valid.



M23, Rear panel feed-through, application: Signal, series: RC, straight, shielded: yes, Screw locking mechanism, No. of pos.: 17, Direction of rotation: Standard, contact connection type: Socket, Solder cup, Radial O-ring, Panel thickness max.: 2.5 mm, coding: N

Commercial data

| | |
|--------------------------------------|--------------------------------|
| Item number | 1601951 |
| Packing unit | 20 pc |
| Minimum order quantity | 1 pc |
| Note | Made to order (non-returnable) |
| Product key | ABRAFJ |
| GTIN | 4046356237420 |
| Weight per piece (including packing) | 84.06 g |
| Weight per piece (excluding packing) | 84.06 g |
| Country of origin | DE |

RC-17S1N12C3K5 - Rear panel feed-through



1601951

<https://www.phoenixcontact.com/us/products/1601951>

Technical data

Product properties

| | |
|--------------|---------------------------------|
| Product type | Circular connector (cable-side) |
|--------------|---------------------------------|

Material specifications

| | |
|------------------|-------|
| Housing material | Metal |
|------------------|-------|

Connector

Insulating body

| | |
|---|---|
| Coding | N |
| Material (Insulating body) | PBT |
| Material (Contact) | CuZn |
| Material (Contact surface) | Ni/Au |
| Insertion/withdrawal cycles | 50 |
| Connection method | Solder cup |
| Contact switching type | Socket |
| Application | Signal |
| Number of positions | 17 |
| Direction of rotation | Standard |
| Connection profile | 17 |
| Number (Contact group 1) | 17 |
| Contact diameter (Contact group 1) | 1 mm |
| Litz wires Min. cross section (Contact group 1) | 0.08 mm ² |
| Litz wires Max. cross section (Contact group 1) | 1 mm ² |
| Rated current Contact (Contact group 1) | 8 A (for max. connection cross section) |
| Rated voltage Contact (Contact group 1) | 48 V AC 74 V DC |
| Rated surge voltage | 1.5 kV |
| Overvoltage category | III |
| Degree of pollution | 3 |

Housing

| | |
|-----------------------------------|--|
| Order information: | Order contact inserts and cable clamping/shield accessories separately |
| Type | Feed-through header |
| Thread type | M23 |
| Design | straight |
| Type of locking | Screw locking mechanism |
| Pg screw connection | none |
| Mounting type | Rear mounting/square flange (4x M3) |
| Housing material | Metal |
| Degree of protection (plugged in) | IP67 |
| Seal for the device | Radial O-ring |

RC-17S1N12C3K5 - Rear panel feed-through



1601951

<https://www.phoenixcontact.com/us/products/1601951>

Drawings

Schematic diagram



Connector pin assignment

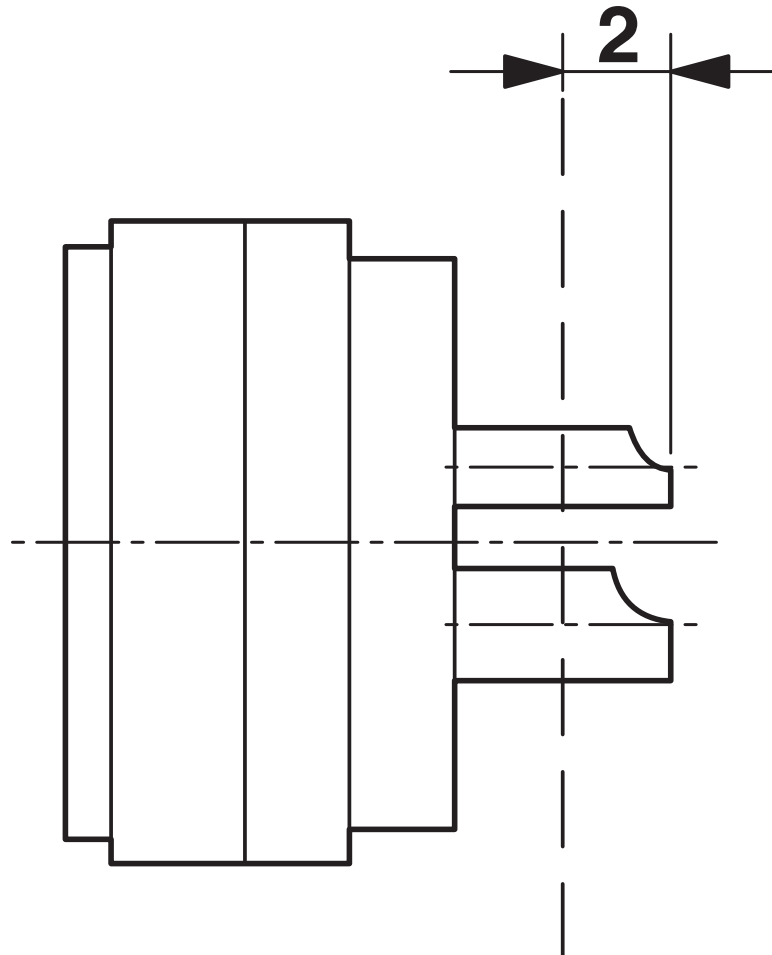
RC-17S1N12C3K5 - Rear panel feed-through



1601951

<https://www.phoenixcontact.com/us/products/1601951>

Schematic diagram



Dimensional drawing

Phoenix Contact 2026 © - all rights reserved
<https://www.phoenixcontact.com>

Phoenix Contact USA
586 Fulling Mill Road
Middletown, PA 17057, United States
(+717) 944-1300
info@phoenixcon.com