

RC-16S1N12LL00 - Cable connector



1600974

<https://www.phoenixcontact.com/us/products/1600974>

Please be informed that the data shown in this PDF document is generated from our online catalog. Please find the complete data in the user documentation. Our general terms of use for downloads are valid.



Cable connector, application: Signal, No. of pos.: 16, Direction of rotation: Standard, contact connection type: Socket, Solder cup, coding: N. This product is in the process of being discontinued. This product must no longer be considered for new projects. Please contact your sales representative for alternatives.

Commercial data

| | |
|--------------------------------------|---------------|
| Item number | 1600974 |
| Packing unit | 20 pc |
| Minimum order quantity | 1 pc |
| Product key | ABRAFA |
| GTIN | 4046356380935 |
| Weight per piece (including packing) | 126.28 g |
| Weight per piece (excluding packing) | 121.32 g |
| Country of origin | DE |

RC-16S1N12LL00 - Cable connector



1600974

<https://www.phoenixcontact.com/us/products/1600974>

Technical data

Product properties

| | |
|------------------------------|---------------------------------|
| Product type | Circular connector (cable-side) |
| Type of the screw connection | IP68 screw |
| Thread type | M23 |

Material specifications

| | |
|--|----|
| Flammability rating according to UL 94 | V0 |
|--|----|

Mechanical properties

Mechanical data

| | |
|------------------------------|------------|
| Type of the screw connection | IP68 screw |
|------------------------------|------------|

Connector

Insulating body

| | |
|---|---|
| Coding | N |
| Material (Insulating body) | PBT |
| Material (Contact) | CuZn |
| Material (Contact surface) | Ni/Au |
| Insertion/withdrawal cycles | 50 |
| Connection method | Solder cup |
| Contact switching type | Socket |
| Application | Signal |
| Number of positions | 16 |
| Direction of rotation | Standard |
| Connection profile | 16 |
| Number (Contact group 1) | 16 |
| Contact diameter (Contact group 1) | 1 mm |
| Litz wires Min. cross section (Contact group 1) | 0.08 mm ² |
| Litz wires Max. cross section (Contact group 1) | 1 mm ² |
| Rated current Contact (Contact group 1) | 8 A (for max. connection cross section) |
| Rated voltage Contact (Contact group 1) | 48 V AC 74 V DC |
| Rated surge voltage | 1.5 kV |
| Overvoltage category | III |
| Degree of pollution | 3 |

Environmental and real-life conditions

Ambient conditions

| | |
|----------------------|------|
| Degree of protection | IP67 |
|----------------------|------|

RC-16S1N12LL00 - Cable connector

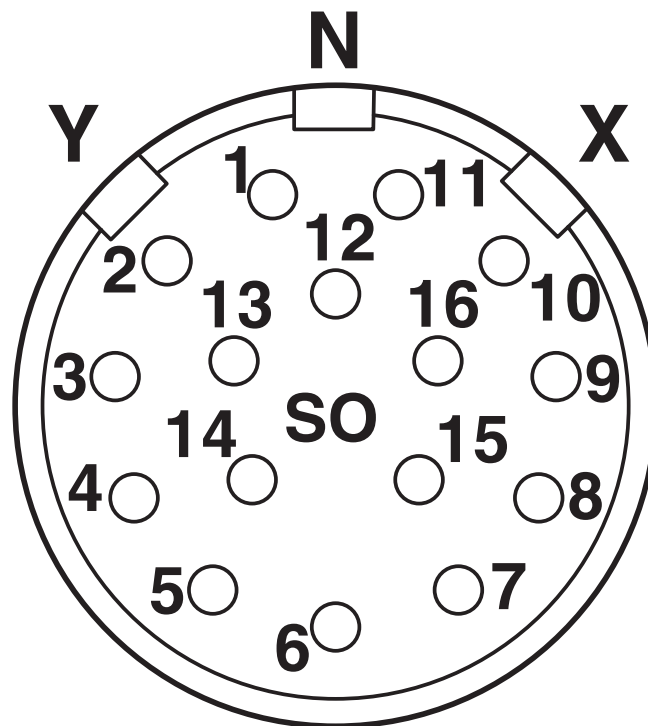


1600974

<https://www.phoenixcontact.com/us/products/1600974>

Drawings

Schematic diagram



Connector pin assignment

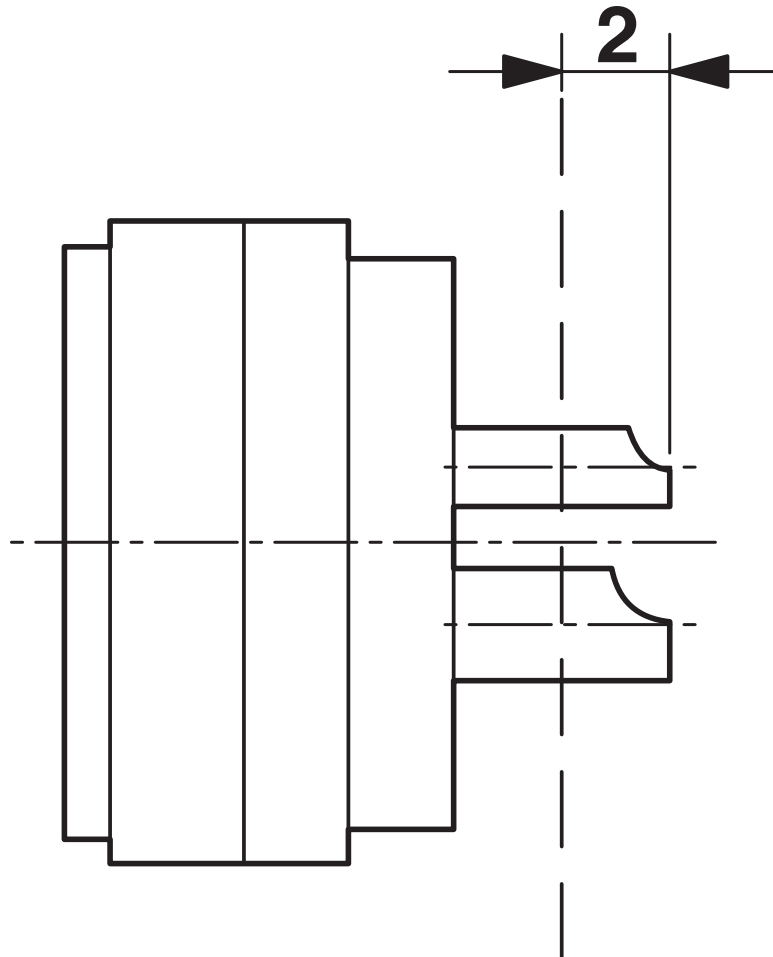
RC-16S1N12LL00 - Cable connector



1600974

<https://www.phoenixcontact.com/us/products/1600974>

Schematic diagram



Dimensional drawing

RC-16S1N12LL00 - Cable connector



1600974

<https://www.phoenixcontact.com/us/products/1600974>

Classifications

ECLASS

| | |
|-------------|----------|
| ECLASS-13.0 | 27440116 |
| ECLASS-15.0 | 27440116 |

ETIM

| | |
|-----------|----------|
| ETIM 10.0 | EC002635 |
|-----------|----------|

UNSPSC

| | |
|-------------|----------|
| UNSPSC 21.0 | 39121400 |
|-------------|----------|

RC-16S1N12LL00 - Cable connector



1600974

<https://www.phoenixcontact.com/us/products/1600974>

Environmental product compliance

EU RoHS

| | |
|---|------|
| Fulfills EU RoHS substance requirements | Yes |
| Exemption | 6(c) |

China RoHS

| | |
|--|---|
| Environment friendly use period (EFUP) | EFUP-50 |
| | An article-related China RoHS declaration table can be found in the download area for the respective article under "Manufacturer declaration". For all articles with EFUP-E, no China RoHS declaration table issued and required. |

EU REACH SVHC

| | |
|-------------------------------------|--------------------------------------|
| REACH candidate substance (CAS No.) | Lead(CAS: 7439-92-1) |
| SCIP | ef229e05-663c-43d7-8f85-aa90e41d6eef |

Phoenix Contact 2026 © - all rights reserved

<https://www.phoenixcontact.com>

Phoenix Contact USA
586 Fulling Mill Road
Middletown, PA 17057, United States
(+717) 944-1300
info@phoenixcon.com