

# RC-16S1N12LC00 - Cable connector



1600971

<https://www.phoenixcontact.com/us/products/1600971>

Please be informed that the data shown in this PDF document is generated from our online catalog. Please find the complete data in the user documentation. Our general terms of use for downloads are valid.



Cable connector, application: Signal, No. of pos.: 16, Direction of rotation: Standard, contact connection type: Socket, Solder cup, coding: N. This product is in the process of being discontinued. This product must no longer be considered for new projects. Please contact your sales representative for alternatives.

## Commercial data

Item number	1600971
Packing unit	20 pc
Minimum order quantity	1 pc
Note	Made to order (non-returnable)
Product key	ABRAFA
GTIN	4046356232678
Weight per piece (including packing)	128 g
Weight per piece (excluding packing)	122.769 g
Country of origin	DE

# RC-16S1N12LC00 - Cable connector



1600971

<https://www.phoenixcontact.com/us/products/1600971>

## Technical data

### Product properties

Product type	Circular connector (cable-side)
Thread type	M23

### Material specifications

Flammability rating according to UL 94	V0
--	----

### Connector

#### Insulating body

Coding	N
Material (Insulating body)	PBT
Material (Contact)	CuZn
Material (Contact surface)	Ni/Au
Insertion/withdrawal cycles	50
Connection method	Solder cup
Contact switching type	Socket
Application	Signal
Number of positions	16
Direction of rotation	Standard
Connection profile	16
Number (Contact group 1)	16
Contact diameter (Contact group 1)	1 mm
Litz wires Min. cross section (Contact group 1)	0.08 mm <sup>2</sup>
Litz wires Max. cross section (Contact group 1)	1 mm <sup>2</sup>
Rated current Contact (Contact group 1)	8 A (for max. connection cross section)
Rated voltage Contact (Contact group 1)	48 V AC
	74 V DC
Rated surge voltage	1.5 kV
Overvoltage category	III
Degree of pollution	3

### Environmental and real-life conditions

#### Ambient conditions

Degree of protection	IP67
----------------------	------

# RC-16S1N12LC00 - Cable connector

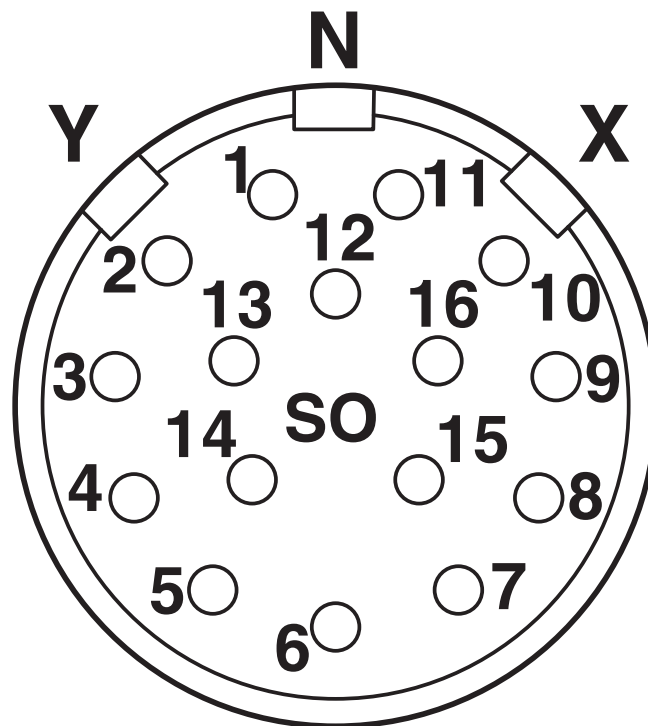


1600971

<https://www.phoenixcontact.com/us/products/1600971>

## Drawings

Schematic diagram



Connector pin assignment

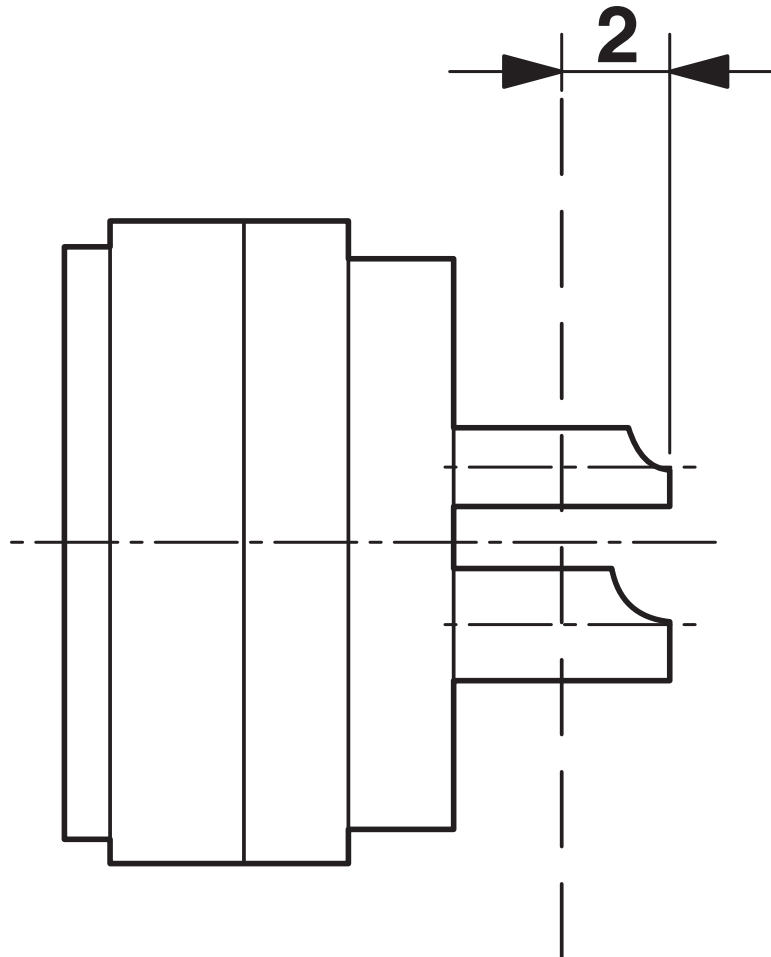
# RC-16S1N12LC00 - Cable connector



1600971

<https://www.phoenixcontact.com/us/products/1600971>

Schematic diagram



Dimensional drawing

# RC-16S1N12LC00 - Cable connector



1600971

<https://www.phoenixcontact.com/us/products/1600971>

## Classifications

### ECLASS

ECLASS-13.0	27440116
ECLASS-15.0	27440116

### ETIM

ETIM 10.0	EC002635
-----------	----------

### UNSPSC

UNSPSC 21.0	39121400
-------------	----------

# RC-16S1N12LC00 - Cable connector



1600971

<https://www.phoenixcontact.com/us/products/1600971>

## Environmental product compliance

### EU RoHS

Fulfills EU RoHS substance requirements	Yes
Exemption	6(c)

### China RoHS

Environment friendly use period (EFUP)	EFUP-50
	An article-related China RoHS declaration table can be found in the download area for the respective article under "Manufacturer declaration". For all articles with EFUP-E, no China RoHS declaration table issued and required.

### EU REACH SVHC

REACH candidate substance (CAS No.)	Lead(CAS: 7439-92-1)
SCIP	4c62913f-fb4a-4cbb-865e-8cc64407c0ac

Phoenix Contact 2026 © - all rights reserved

<https://www.phoenixcontact.com>

Phoenix Contact USA  
586 Fulling Mill Road  
Middletown, PA 17057, United States  
(+717) 944-1300  
[info@phoenixcon.com](mailto:info@phoenixcon.com)