

RC-12S2N1280FR - Cable connector



1599746

<https://www.phoenixcontact.com/us/products/1599746>

Please be informed that the data shown in this PDF document is generated from our online catalog. Please find the complete data in the user documentation. Our general terms of use for downloads are valid.



M23, Cable connector, application: Signal, straight, Screw locking mechanism, No. of pos.: 12, Direction of rotation: Counter direction, contact connection type: Socket, Solder cup, cable diameter range: 3 mm ... 10.5 mm, coding: N. This product is in the process of being discontinued. This product must no longer be considered for new projects. Please contact your sales representative for alternatives. Alternative products: 1543932

The figure shows the product version with standard contact chamber numbering

Commercial data

Item number	1599746
Packing unit	20 pc
Minimum order quantity	1 pc
Note	Made to order (non-returnable)
Product key	ABRAFA
GTIN	4046356227230
Weight per piece (including packing)	75.405 g
Weight per piece (excluding packing)	71.013 g
Country of origin	DE

RC-12S2N1280FR - Cable connector



1599746

<https://www.phoenixcontact.com/us/products/1599746>

Technical data

Product properties

Product type	Circular connector (cable-side)
--------------	---------------------------------

Connector

Insulating body

Coding	N
Material (Insulating body)	PBT
Material (Contact)	CuZn
Material (Contact surface)	Ni/Au
Insertion/withdrawal cycles	50
Connection method	Solder cup
Contact switching type	Socket
Application	Signal
Number of positions	12
Direction of rotation	Counter direction
Connection profile	12
Number (Contact group 1)	12
Contact diameter (Contact group 1)	1 mm
Litz wires Min. cross section (Contact group 1)	0.08 mm ²
Litz wires Max. cross section (Contact group 1)	1 mm ²
Rated current Contact (Contact group 1)	8 A (for max. connection cross section)
Rated voltage Contact (Contact group 1)	48 V AC 74 V DC
Rated surge voltage	1.5 kV
Overvoltage category	III
Degree of pollution	3

Housing

Note	Order contact inserts separately
Type	Cable connector housing
Thread type	M23
Design	straight
Type of locking	Screw locking mechanism
Pg screw connection	none
Material (Housing)	Metal
Degree of protection (plugged in)	IP65 IP67 IP68

Seal

External cable diameter	3 mm ... 10.5 mm
Seal material	NBR

RC-12S2N1280FR - Cable connector



1599746

<https://www.phoenixcontact.com/us/products/1599746>

Drawings

Schematic diagram



Connector pin assignment

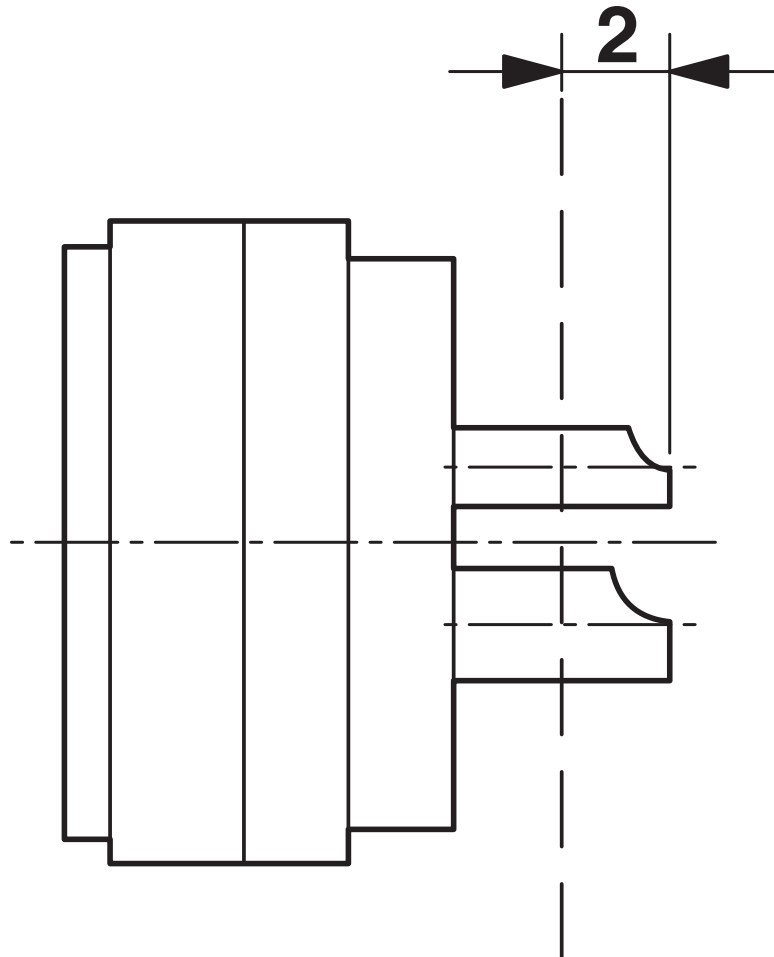
RC-12S2N1280FR - Cable connector



1599746

<https://www.phoenixcontact.com/us/products/1599746>

Schematic diagram



Dimensional drawing

RC-12S2N1280FR - Cable connector



1599746

<https://www.phoenixcontact.com/us/products/1599746>

Classifications

ECLASS

ECLASS-13.0	27440116
ECLASS-15.0	27440116

ETIM

ETIM 10.0	EC002635
-----------	----------

UNSPSC

UNSPSC 21.0	39121400
-------------	----------

RC-12S2N1280FR - Cable connector



1599746

<https://www.phoenixcontact.com/us/products/1599746>

Environmental product compliance

EU RoHS

Fulfills EU RoHS substance requirements	Yes
Exemption	6(c)

China RoHS

Environment friendly use period (EFUP)	EFUP-50
	An article-related China RoHS declaration table can be found in the download area for the respective article under "Manufacturer declaration". For all articles with EFUP-E, no China RoHS declaration table issued and required.

EU REACH SVHC

REACH candidate substance (CAS No.)	Lead(CAS: 7439-92-1)
SCIP	e29c8a18-b922-4817-b6f6-53403f445716

Phoenix Contact 2026 © - all rights reserved

<https://www.phoenixcontact.com>

Phoenix Contact USA
586 Fulling Mill Road
Middletown, PA 17057, United States
(+717) 944-1300
info@phoenixcon.com