

RC-12S1N12ZL00 - Cable connector



1599077

<https://www.phoenixcontact.com/us/products/1599077>

Please be informed that the data shown in this PDF document is generated from our online catalog. Please find the complete data in the user documentation. Our general terms of use for downloads are valid.



M23, Cable connector, application: Signal, series: RC, angled, shielded: no, Screw locking mechanism, No. of pos.: 12, Direction of rotation: Standard, contact connection type: Socket, Solder cup, coding: N. This product is in the process of being discontinued. This product must no longer be considered for new projects. Please contact your sales representative for alternatives.

Commercial data

Item number	1599077
Packing unit	8 pc
Minimum order quantity	1 pc
Note	Made to order (non-returnable)
Sales key	AB31
Product key	ABRAFC
GTIN	4046356224000
Weight per piece (including packing)	175.013 g
Weight per piece (excluding packing)	162.555 g
Customs tariff number	85366990
Country of origin	DE

RC-12S1N12ZL00 - Cable connector



1599077

<https://www.phoenixcontact.com/us/products/1599077>

Technical data

Product properties

Product type	Circular connector (cable-side)
Type of the screw connection	IP68 screw
Thread type	M23

Material specifications

Flammability rating according to UL 94	V0
--	----

Mechanical properties

Mechanical data

Type of the screw connection	IP68 screw
------------------------------	------------

Connector

Insulating body

Coding	N
Material (Insulating body)	PBT
Material (Contact)	CuZn
Material (Contact surface)	Ni/Au
Insertion/withdrawal cycles	50
Connection method	Solder cup
Contact switching type	Socket
Application	Signal
Number of positions	12
Direction of rotation	Standard
Connection profile	12
Number (Contact group 1)	12
Contact diameter (Contact group 1)	1 mm
Litz wires Min. cross section (Contact group 1)	0.08 mm ²
Litz wires Max. cross section (Contact group 1)	1 mm ²
Rated current Contact (Contact group 1)	8 A (for max. connection cross section)
Rated voltage Contact (Contact group 1)	48 V AC 74 V DC
Rated surge voltage	1.5 kV
Overvoltage category	III
Degree of pollution	3

Housing

Order information:	Order contact inserts and cable clamping separately
Type	Cable connector housing
Thread type	M23
Design	angled

RC-12S1N12ZL00 - Cable connector



1599077

<https://www.phoenixcontact.com/us/products/1599077>

Type of locking	Screw locking mechanism
Pg screw connection	Pg13,5
Material (Housing)	GD-Zn
Material (Housing surface)	Ni
Material (Rotating parts)	CuZn
Degree of protection (plugged in)	IP65
	IP67

Environmental and real-life conditions

Ambient conditions

Degree of protection	IP67
----------------------	------

RC-12S1N12ZL00 - Cable connector



1599077

<https://www.phoenixcontact.com/us/products/1599077>

Drawings

Schematic diagram



Connector pin assignment

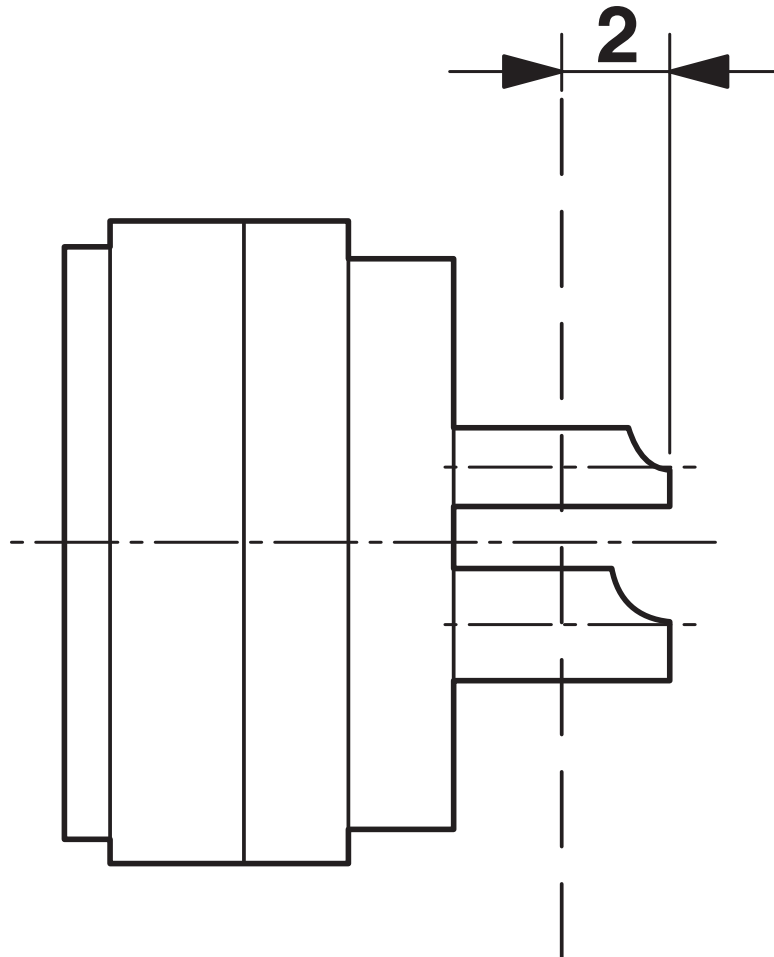
RC-12S1N12ZL00 - Cable connector



1599077

<https://www.phoenixcontact.com/us/products/1599077>

Schematic diagram



Dimensional drawing

RC-12S1N12ZL00 - Cable connector



1599077

<https://www.phoenixcontact.com/us/products/1599077>

Classifications

ECLASS

ECLASS-13.0	27440116
ECLASS-15.0	27440116

ETIM

ETIM 10.0	EC002635
-----------	----------

UNSPSC

UNSPSC 21.0	39121400
-------------	----------

RC-12S1N12ZL00 - Cable connector



1599077

<https://www.phoenixcontact.com/us/products/1599077>

Environmental product compliance

EU RoHS

Fulfills EU RoHS substance requirements	Yes
Exemption	6(c)

China RoHS

Environment friendly use period (EFUP)	EFUP-50
	An article-related China RoHS declaration table can be found in the download area for the respective article under "Manufacturer declaration". For all articles with EFUP-E, no China RoHS declaration table issued and required.

EU REACH SVHC

REACH candidate substance (CAS No.)	Lead(CAS: 7439-92-1)
SCIP	82fe8f05-1304-4a2c-bb27-eb4361e9c188

Phoenix Contact 2026 © - all rights reserved

<https://www.phoenixcontact.com>

Phoenix Contact USA
586 Fulling Mill Road
Middletown, PA 17057, United States
(+717) 944-1300
info@phoenixcon.com