

# RC-12S1N1290J0 - Coupler connector



1598727

<https://www.phoenixcontact.com/us/products/1598727>

Please be informed that the data shown in this PDF document is generated from our online catalog. Please find the complete data in the user documentation. Our general terms of use for downloads are valid.



M23, Coupler connector, application: Signal, series: RC, straight, shielded: yes, Screw locking mechanism, No. of pos.: 12, Direction of rotation: Standard, contact connection type: Socket, Solder cup, cable diameter range: 9.5 mm ... 10.5 mm, coding: N

## Commercial data

Item number	1598727
Packing unit	20 pc
Minimum order quantity	1 pc
Note	Made to order (non-returnable)
Product key	ABRAFG
GTIN	4046356222211
Weight per piece (including packing)	69.03 g
Weight per piece (excluding packing)	69.03 g
Country of origin	DE

# RC-12S1N1290J0 - Coupler connector



1598727

<https://www.phoenixcontact.com/us/products/1598727>

## Technical data

### Product properties

Product type	Circular connector (cable-side)
--------------	---------------------------------

### Connector

#### Insulating body

Coding	N
Material (Insulating body)	PBT
Material (Contact)	CuZn
Material (Contact surface)	Ni/Au
Insertion/withdrawal cycles	50
Connection method	Solder cup
Contact switching type	Socket
Application	Signal
Number of positions	12
Direction of rotation	Standard
Connection profile	12
Number (Contact group 1)	12
Contact diameter (Contact group 1)	1 mm
Litz wires Min. cross section (Contact group 1)	0.08 mm <sup>2</sup>
Litz wires Max. cross section (Contact group 1)	1 mm <sup>2</sup>
Rated current Contact (Contact group 1)	8 A (for max. connection cross section)
Rated voltage Contact (Contact group 1)	48 V AC 74 V DC
Rated surge voltage	1.5 kV
Overvoltage category	III
Degree of pollution	3

#### Housing

Type	Coupling housing
Thread type	M23
Design	straight
Type of locking	Screw locking mechanism
Pg screw connection	none
Material (Housing)	GD-Zn
Material (Housing surface)	Ni
Material (Rotating parts)	CuZn
Degree of protection (plugged in)	IP67

#### Seal

External cable diameter	9.5 mm ... 10.5 mm
-------------------------	--------------------

# RC-12S1N1290J0 - Coupler connector



1598727

<https://www.phoenixcontact.com/us/products/1598727>

## Drawings

Schematic diagram



Connector pin assignment

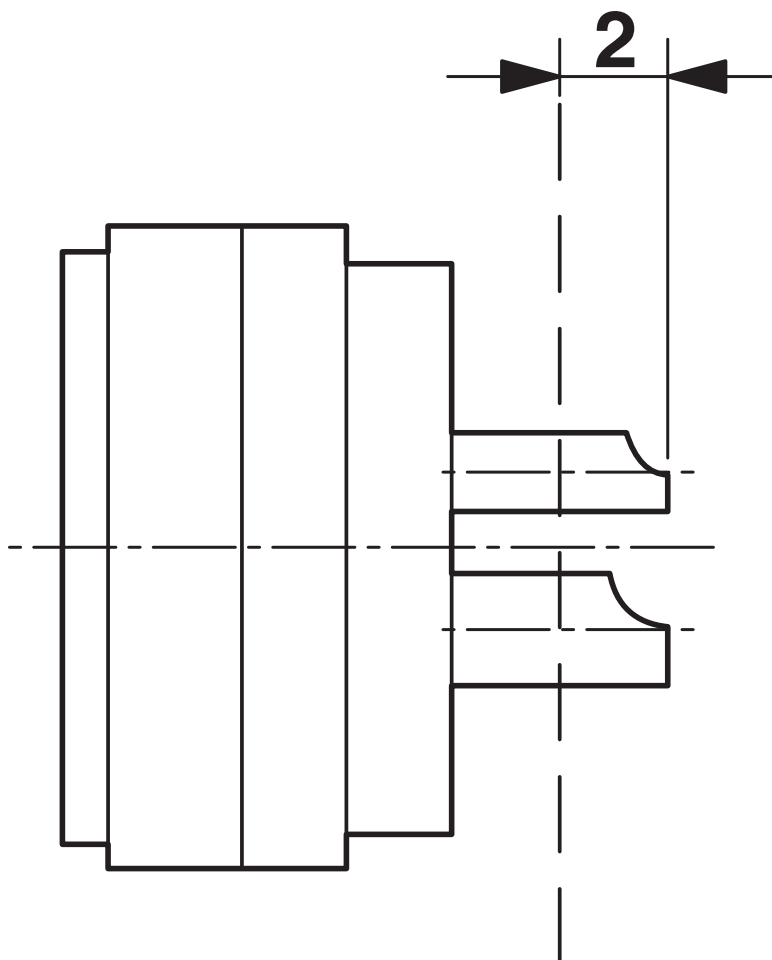
# RC-12S1N1290J0 - Coupler connector



1598727

<https://www.phoenixcontact.com/us/products/1598727>

Schematic diagram



Dimensional drawing

# RC-12S1N1290J0 - Coupler connector



1598727

<https://www.phoenixcontact.com/us/products/1598727>

## Classifications

### UNSPSC

UNSPSC 21.0	39121413
-------------	----------

# RC-12S1N1290J0 - Coupler connector



1598727

<https://www.phoenixcontact.com/us/products/1598727>

## Environmental product compliance

### EU RoHS

Fulfills EU RoHS substance requirements	Yes
Exemption	6(c)

### China RoHS

Environment friendly use period (EFUP)	EFUP-50
	An article-related China RoHS declaration table can be found in the download area for the respective article under "Manufacturer declaration". For all articles with EFUP-E, no China RoHS declaration table issued and required.

### EU REACH SVHC

REACH candidate substance (CAS No.)	No substance above 0.1 wt%
-------------------------------------	----------------------------

Phoenix Contact 2026 © - all rights reserved  
<https://www.phoenixcontact.com>

Phoenix Contact USA  
586 Fulling Mill Road  
Middletown, PA 17057, United States  
(+717) 944-1300  
[info@phoenixcon.com](mailto:info@phoenixcon.com)