

# RC-12S1N127B00 - Coupler connector



1598578

<https://www.phoenixcontact.com/us/products/1598578>

Please be informed that the data shown in this PDF document is generated from our online catalog. Please find the complete data in the user documentation. Our general terms of use for downloads are valid.



M23, Coupler connector, application: Signal, series: RC, straight, shielded: no, Screw locking mechanism, No. of pos.: 12, Direction of rotation: Standard, contact connection type: Socket, Solder cup, coding: N

The figure shows the 12-pos. product version, with standard DIN cable gland

## Commercial data

Item number	1598578
Packing unit	20 pc
Minimum order quantity	1 pc
Note	Made to order (non-returnable)
Product key	ABRAFG
GTIN	4046356221450
Weight per piece (including packing)	118.9 g
Weight per piece (excluding packing)	96.89 g
Country of origin	DE

# RC-12S1N127B00 - Coupler connector



1598578

<https://www.phoenixcontact.com/us/products/1598578>

## Technical data

### Notes

Order information:	Double bracket strain relief included
--------------------	---------------------------------------

### Product properties

Product type	Circular connector (cable-side)
Thread type	M23

### Material specifications

Flammability rating according to UL 94	V0
--	----

### Connection data

#### Conductor connection

Connection method	Solder connection
-------------------	-------------------

### Connector

#### Insulating body

Coding	N
Material (Insulating body)	PBT
Material (Contact)	CuZn
Material (Contact surface)	Ni/Au
Insertion/withdrawal cycles	50
Connection method	Solder cup
Contact switching type	Socket
Application	Signal
Number of positions	12
Direction of rotation	Standard
Connection profile	12
Number (Contact group 1)	12
Contact diameter (Contact group 1)	1 mm
Litz wires Min. cross section (Contact group 1)	0.08 mm <sup>2</sup>
Litz wires Max. cross section (Contact group 1)	1 mm <sup>2</sup>
Rated current Contact (Contact group 1)	8 A (for max. connection cross section)
Rated voltage Contact (Contact group 1)	48 V AC
	74 V DC
Rated surge voltage	1.5 kV
Overvoltage category	III
Degree of pollution	3

#### Housing

Type	Coupling housing
Thread type	M23

# RC-12S1N127B00 - Coupler connector



1598578

<https://www.phoenixcontact.com/us/products/1598578>

Design	straight
Type of locking	Screw locking mechanism
Pg screw connection	Pg9
Material (Housing)	GD-Zn
Material (Housing surface)	Ni
Material (Rotating parts)	CuZn
Degree of protection (plugged in)	IP65
	IP67
	IP68

## Environmental and real-life conditions

### Ambient conditions

Degree of protection	IP67
----------------------	------

# RC-12S1N127B00 - Coupler connector

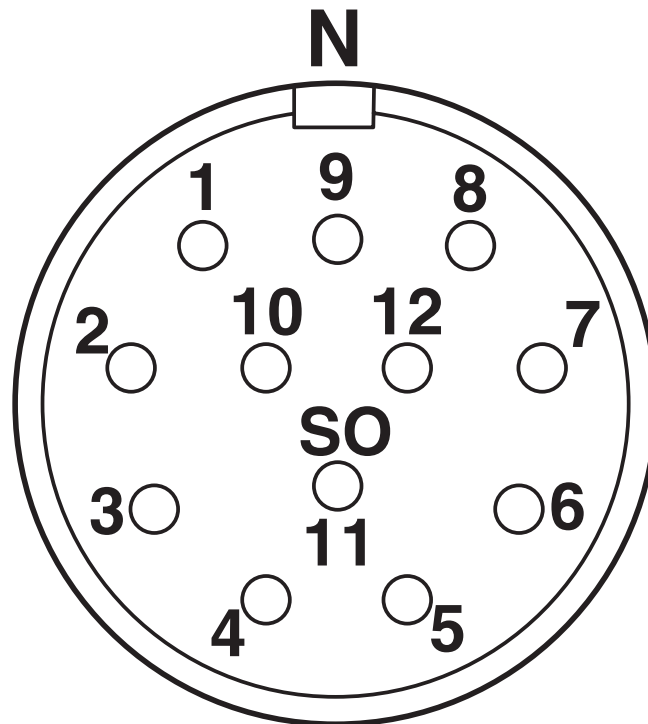


1598578

<https://www.phoenixcontact.com/us/products/1598578>

## Drawings

Schematic diagram



Connector pin assignment

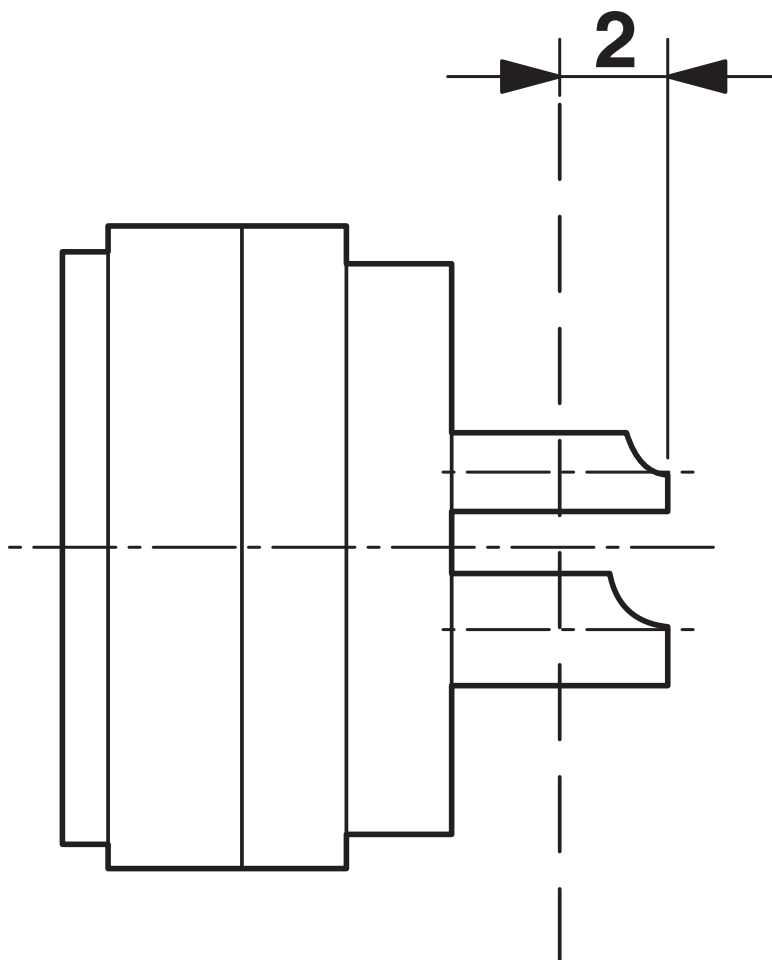
# RC-12S1N127B00 - Coupler connector



1598578

<https://www.phoenixcontact.com/us/products/1598578>

Schematic diagram



Dimensional drawing

# RC-12S1N127B00 - Coupler connector



1598578

<https://www.phoenixcontact.com/us/products/1598578>

## Classifications

### UNSPSC

UNSPSC 21.0	39121400
-------------	----------

# RC-12S1N127B00 - Coupler connector



1598578

<https://www.phoenixcontact.com/us/products/1598578>

## Environmental product compliance

### EU RoHS

Fulfills EU RoHS substance requirements	Yes
Exemption	6(c)

### China RoHS

Environment friendly use period (EFUP)	EFUP-50
	An article-related China RoHS declaration table can be found in the download area for the respective article under "Manufacturer declaration". For all articles with EFUP-E, no China RoHS declaration table issued and required.

### EU REACH SVHC

REACH candidate substance (CAS No.)	Lead(CAS: 7439-92-1)
SCIP	d2ddd5e1-6f59-45fb-852a-ab789d5a829f

Phoenix Contact 2026 © - all rights reserved

<https://www.phoenixcontact.com>

Phoenix Contact USA  
586 Fulling Mill Road  
Middletown, PA 17057, United States  
(+717) 944-1300  
[info@phoenixcon.com](mailto:info@phoenixcon.com)