

RC-12S1N121K00 - Sleeve housing for cable connector

1598509

<https://www.phoenixcontact.com/us/products/1598509>

Please be informed that the data shown in this PDF document is generated from our online catalog. Please find the complete data in the user documentation. Our general terms of use for downloads are valid.



The figure shows the 12-pos. product version, with standard DIN cable gland

M23, Sleeve housing for cable connector, application: Signal, series: RC, straight, shielded: no, Screw locking mechanism, No. of pos.: 12, Direction of rotation: Standard, contact connection type: Socket, Solder cup, coding: N, Alternative product in accordance with RoHS II without Exemption 6c (Pb < 0.1 %) item no.: 1240962

Commercial data

Item number	1598509
Packing unit	20 pc
Minimum order quantity	1 pc
Note	Made to order (non-returnable)
Sales key	BF19
Product key	ABRAFA
GTIN	4046356220989
Weight per piece (including packing)	102.91 g
Weight per piece (excluding packing)	102.48 g
Customs tariff number	85366990
Country of origin	DE

RC-12S1N121K00 - Sleeve housing for cable connector



1598509

<https://www.phoenixcontact.com/us/products/1598509>

Technical data

Product properties

Product type	Sleeve housings
Application	Signal
Thread type	M23

Connector

Insulating body

Coding	N
Material (Insulating body)	PBT
Material (Contact)	CuZn
Material (Contact surface)	Ni/Au
Insertion/withdrawal cycles	50
Connection method	Solder cup
Contact switching type	Socket
Application	Signal
Number of positions	12
Direction of rotation	Standard
Connection profile	12
Number (Contact group 1)	12
Contact diameter (Contact group 1)	1 mm
Litz wires Min. cross section (Contact group 1)	0.08 mm ²
Litz wires Max. cross section (Contact group 1)	1 mm ²
Rated current Contact (Contact group 1)	8 A (for max. connection cross section)
Rated voltage Contact (Contact group 1)	48 V AC 74 V DC
Rated surge voltage	1.5 kV
Overvoltage category	III
Degree of pollution	3

Housing

Type	Cable connector housing
Thread type	M23
Design	straight
Type of locking	Screw locking mechanism
Pg screw connection	Pg11
Material (Housing)	GD-Zn
Material (Housing surface)	Ni
Material (Rotating parts)	CuZn
Degree of protection (plugged in)	IP65 IP67 IP68

RC-12S1N121K00 - Sleeve housing for cable connector



1598509

<https://www.phoenixcontact.com/us/products/1598509>

Environmental and real-life conditions

Ambient conditions

Degree of protection	IP65
	IP67
	IP68

RC-12S1N121K00 - Sleeve housing for cable connector

1598509

<https://www.phoenixcontact.com/us/products/1598509>

Drawings

Schematic diagram



Connector pin assignment

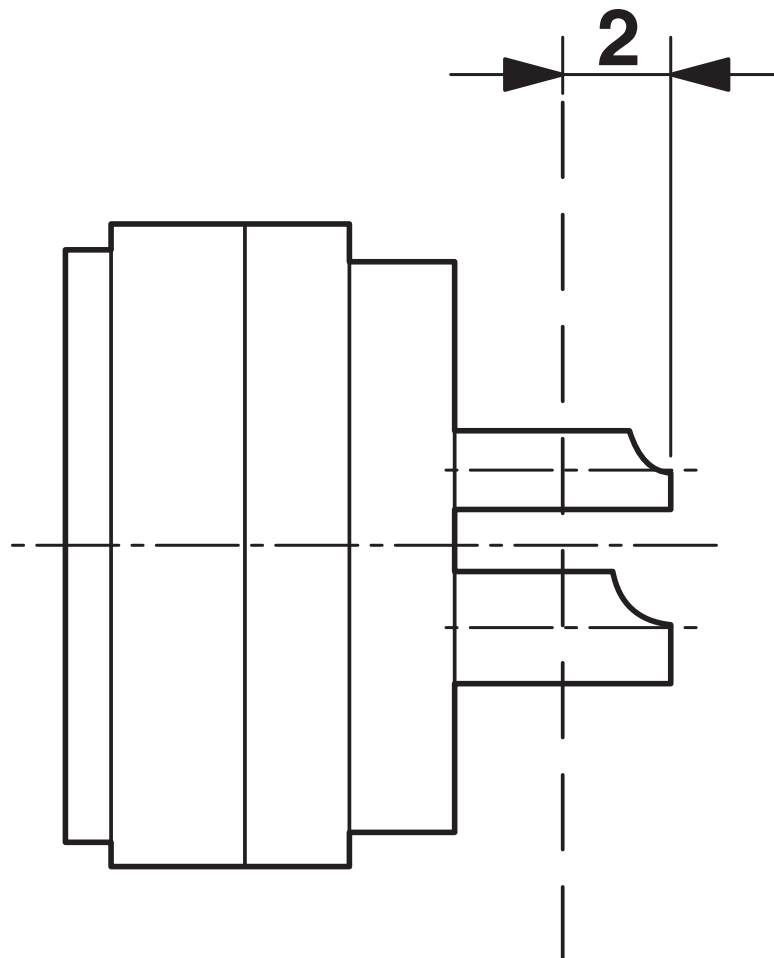
RC-12S1N121K00 - Sleeve housing for cable connector



1598509

<https://www.phoenixcontact.com/us/products/1598509>

Schematic diagram



Dimensional drawing

RC-12S1N121K00 - Sleeve housing for cable connector



1598509

<https://www.phoenixcontact.com/us/products/1598509>

Classifications

ECLASS

ECLASS-13.0	27440224
-------------	----------

UNSPSC

UNSPSC 21.0	39121400
-------------	----------

RC-12S1N121K00 - Sleeve housing for cable connector



1598509

<https://www.phoenixcontact.com/us/products/1598509>

Environmental product compliance

EU RoHS

Fulfills EU RoHS substance requirements	Yes
Exemption	6(c)

China RoHS

Environment friendly use period (EFUP)	EFUP-50
	An article-related China RoHS declaration table can be found in the download area for the respective article under "Manufacturer declaration". For all articles with EFUP-E, no China RoHS declaration table issued and required.

EU REACH SVHC

REACH candidate substance (CAS No.)	Lead(CAS: 7439-92-1)
SCIP	406444da-b15d-4b5a-86c4-bc3b3196ca70

Phoenix Contact 2026 © - all rights reserved
<https://www.phoenixcontact.com>

Phoenix Contact USA
586 Fulling Mill Road
Middletown, PA 17057, United States
(+717) 944-1300
info@phoenixcon.com