

RC-09S2N12M006 - Coupler connector



1596661

<https://www.phoenixcontact.com/us/products/1596661>

Please be informed that the data shown in this PDF document is generated from our online catalog. Please find the complete data in the user documentation. Our general terms of use for downloads are valid.



M23, Coupler connector, application: Signal, series: RC, straight plastic-sheathed, shielded: yes, Screw locking mechanism, No. of pos.: 8+1, Direction of rotation: Counter direction, contact connection type: Socket, Solder cup, cable diameter range: 7.5 mm ... 9.5 mm, coding: N

The figure shows the 12-pos. product version

Commercial data

Item number	1596661
Packing unit	20 pc
Minimum order quantity	1 pc
Note	Made to order (non-returnable)
Product key	ABRAFG
GTIN	4046356212144
Weight per piece (including packing)	46.63 g
Weight per piece (excluding packing)	44.21 g
Country of origin	DE

RC-09S2N12M006 - Coupler connector



1596661

<https://www.phoenixcontact.com/us/products/1596661>

Technical data

Product properties

Product type	Circular connector (cable-side)
--------------	---------------------------------

Connector

Insulating body

Coding	N
Material (Insulating body)	PBT
Material (Contact)	CuZn
Material (Contact surface)	Ni/Au
Insertion/withdrawal cycles	50
Connection method	Solder cup
Contact switching type	Socket
Application	Signal
Number of positions	9
Direction of rotation	Counter direction
Connection profile	8+1
Number (Contact group 1)	1
Contact diameter (Contact group 1)	2 mm
Litz wires Min. cross section (Contact group 1)	0.08 mm ²
Litz wires Max. cross section (Contact group 1)	2.5 mm ²
Rated current Contact (Contact group 1)	20 A (for max. connection cross section)
Rated voltage Contact (Contact group 1)	48 V AC 74 V DC
Rated surge voltage	1.5 kV
Overvoltage category	III
Degree of pollution	3
Number (Contact group 2)	8
Contact diameter (Contact group 2)	1 mm
Litz wires Max. cross section (Contact group 2)	1 mm ²
Rated current Contact (Contact group 2)	8 A
Rated voltage Contact (Contact group 2)	48 V AC 48 V AC

Housing

Type	Coupling housing
Thread type	M23
Design	straight plastic-sheathed
Type of locking	Screw locking mechanism
Pg screw connection	none
Material (Housing)	GD-Zn
Material (Seal)	FPM (O-ring)

RC-09S2N12M006 - Coupler connector



1596661

<https://www.phoenixcontact.com/us/products/1596661>

Degree of protection (plugged in)	IP67
Seal	
External cable diameter	7.5 mm ... 9.5 mm

RC-09S2N12M006 - Coupler connector

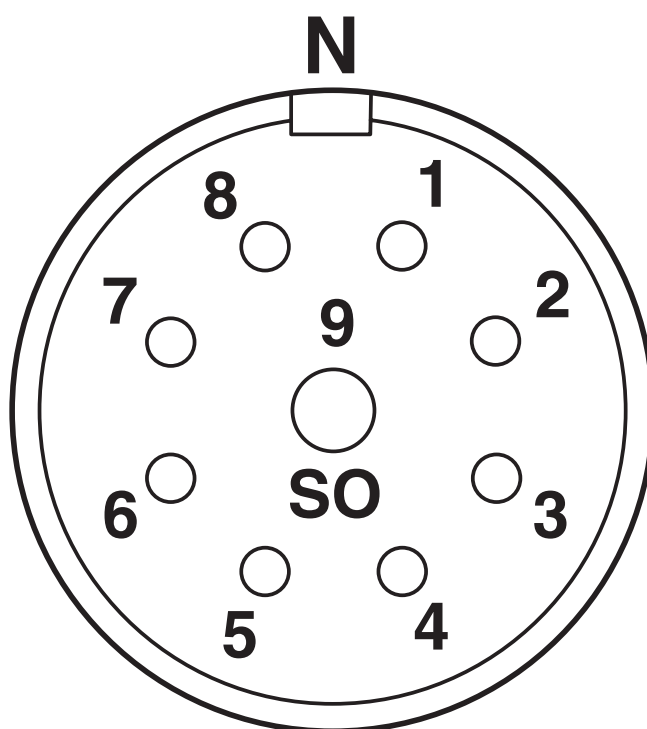


1596661

<https://www.phoenixcontact.com/us/products/1596661>

Drawings

Schematic diagram



Connector pin assignment

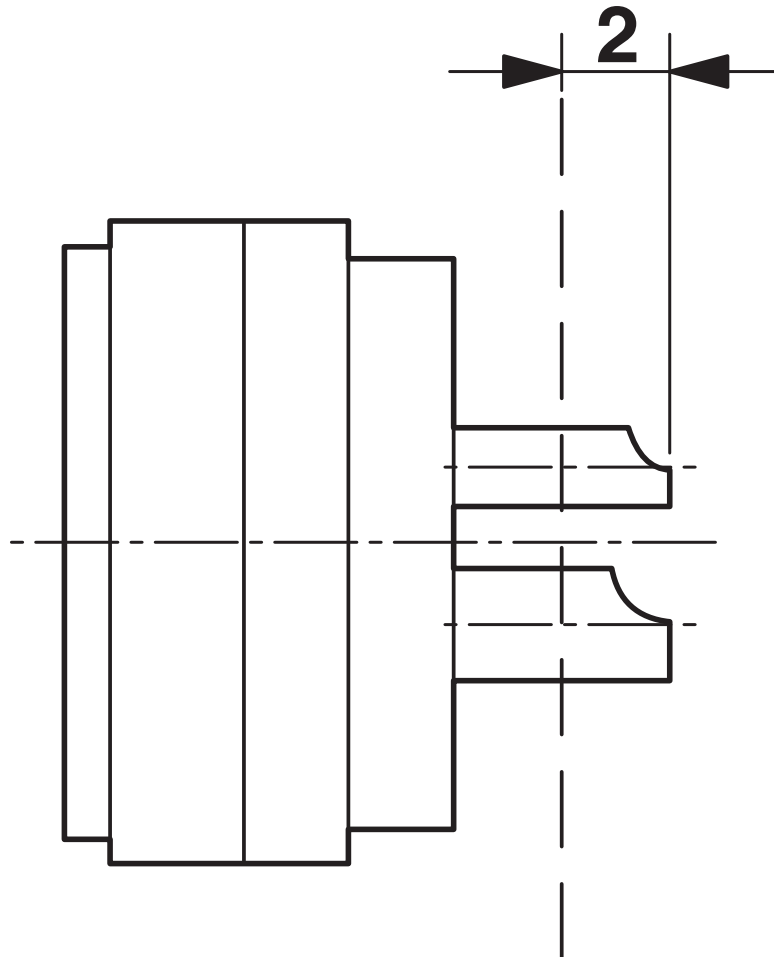
RC-09S2N12M006 - Coupler connector



1596661

<https://www.phoenixcontact.com/us/products/1596661>

Schematic diagram



Dimensional drawing

RC-09S2N12M006 - Coupler connector



1596661

<https://www.phoenixcontact.com/us/products/1596661>

Classifications

UNSPSC

UNSPSC 21.0	39121400
-------------	----------

RC-09S2N12M006 - Coupler connector



1596661

<https://www.phoenixcontact.com/us/products/1596661>

Environmental product compliance

EU RoHS

Fulfills EU RoHS substance requirements	Yes
Exemption	6(c)

China RoHS

Environment friendly use period (EFUP)	EFUP-50
	An article-related China RoHS declaration table can be found in the download area for the respective article under "Manufacturer declaration". For all articles with EFUP-E, no China RoHS declaration table issued and required.

EU REACH SVHC

REACH candidate substance (CAS No.)	Lead(CAS: 7439-92-1)
-------------------------------------	----------------------

Phoenix Contact 2026 © - all rights reserved
<https://www.phoenixcontact.com>

Phoenix Contact USA
586 Fulling Mill Road
Middletown, PA 17057, United States
(+717) 944-1300
info@phoenixcon.com