

# RC-09S2N1280FZ - Cable connector



1596587

<https://www.phoenixcontact.com/us/products/1596587>

Please be informed that the data shown in this PDF document is generated from our online catalog. Please find the complete data in the user documentation. Our general terms of use for downloads are valid.



M23, Cable connector, application: Signal, straight, Screw locking mechanism, No. of pos.: 8+1, Direction of rotation: Counter direction, contact connection type: Socket, Solder cup, coding: N

## Commercial data

Item number	1596587
Packing unit	20 pc
Minimum order quantity	1 pc
Note	Made to order (non-returnable)
Product key	ABRAFA
GTIN	4046356211932
Weight per piece (including packing)	65.97 g
Weight per piece (excluding packing)	65.97 g
Country of origin	DE

# RC-09S2N1280FZ - Cable connector



1596587

<https://www.phoenixcontact.com/us/products/1596587>

## Technical data

### Notes

Order information:	Order cable clamp type cage separately
--------------------	--

### Product properties

Product type	Circular connector (cable-side)
--------------	---------------------------------

### Connector

#### Insulating body

Coding	N
Material (Insulating body)	PBT
Material (Contact)	CuZn
Material (Contact surface)	Ni/Au
Insertion/withdrawal cycles	50
Connection method	Solder cup
Contact switching type	Socket
Application	Signal
Number of positions	9
Direction of rotation	Counter direction
Connection profile	8+1
Number (Contact group 1)	1
Contact diameter (Contact group 1)	2 mm
Litz wires Min. cross section (Contact group 1)	0.08 mm <sup>2</sup>
Litz wires Max. cross section (Contact group 1)	2.5 mm <sup>2</sup>
Rated current Contact (Contact group 1)	20 A (for max. connection cross section)
Rated voltage Contact (Contact group 1)	48 V AC 74 V DC
Rated surge voltage	1.5 kV
Overvoltage category	III
Degree of pollution	3
Number (Contact group 2)	8
Contact diameter (Contact group 2)	1 mm
Litz wires Max. cross section (Contact group 2)	1 mm <sup>2</sup>
Rated current Contact (Contact group 2)	8 A
Rated voltage Contact (Contact group 2)	48 V AC 48 V AC

#### Housing

Note	Order contact inserts separately
Type	Cable connector housing
Thread type	M23
Design	straight

# RC-09S2N1280FZ - Cable connector



1596587

<https://www.phoenixcontact.com/us/products/1596587>

Type of locking	Screw locking mechanism
Pg screw connection	none
Material (Housing)	Metal
Degree of protection (plugged in)	IP65
	IP67
	IP68

# RC-09S2N1280FZ - Cable connector

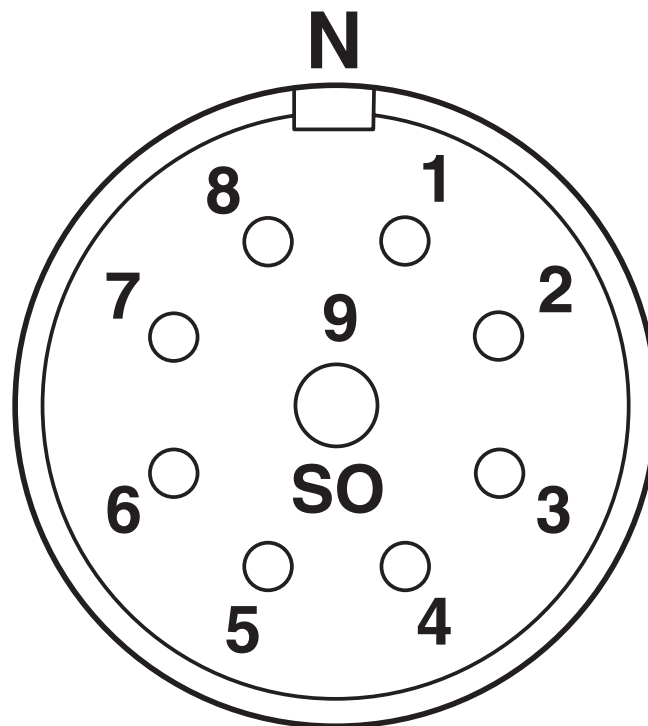


1596587

<https://www.phoenixcontact.com/us/products/1596587>

## Drawings

Schematic diagram



Connector pin assignment

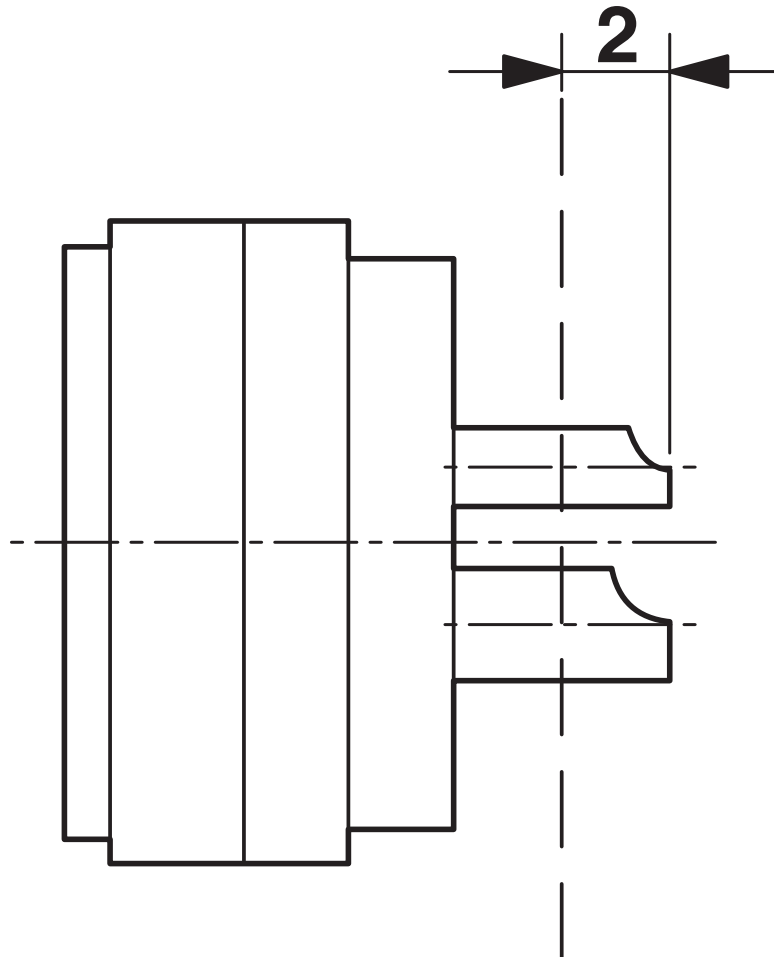
# RC-09S2N1280FZ - Cable connector



1596587

<https://www.phoenixcontact.com/us/products/1596587>

Schematic diagram



Dimensional drawing

# RC-09S2N1280FZ - Cable connector



1596587

<https://www.phoenixcontact.com/us/products/1596587>

## Environmental product compliance

### China RoHS

Environment friendly use period (EFUP)	EFUP-50
	An article-related China RoHS declaration table can be found in the download area for the respective article under "Manufacturer declaration". For all articles with EFUP-E, no China RoHS declaration table issued and required.

### EU REACH SVHC

REACH candidate substance (CAS No.)	No substance above 0.1 wt%
-------------------------------------	----------------------------

Phoenix Contact 2026 © - all rights reserved

<https://www.phoenixcontact.com>

Phoenix Contact USA  
586 Fulling Mill Road  
Middletown, PA 17057, United States  
(+717) 944-1300  
[info@phoenixcon.com](mailto:info@phoenixcon.com)