

RC-09P1N12Z300 - Device connector rear mounting



1595341

<https://www.phoenixcontact.com/us/products/1595341>

Please be informed that the data shown in this PDF document is generated from our online catalog. Please find the complete data in the user documentation. Our general terms of use for downloads are valid.



M23, Device connector rear mounting, application: Signal, series: RC, angled, shielded: no, Screw locking mechanism, No. of pos.: 8+1, Direction of rotation: Standard, contact connection type: Pin, Solder cup, coding: N

Commercial data

Item number	1595341
Packing unit	10 pc
Minimum order quantity	1 pc
Note	Made to order (non-returnable)
Product key	ABRAFC
GTIN	4046356206150
Weight per piece (including packing)	166.1 g
Weight per piece (excluding packing)	142.2 g
Country of origin	DE

RC-09P1N12Z300 - Device connector rear mounting



1595341

<https://www.phoenixcontact.com/us/products/1595341>

Technical data

Product properties

Product type	Circular connectors (device side)
--------------	-----------------------------------

Connector

Insulating body

Coding	N
Material (Insulating body)	PBT
Material (Contact)	CuZn
Material (Contact surface)	Ni/Au
Insertion/withdrawal cycles	50
Connection method	Solder cup
Contact switching type	Pin
Application	Signal
Number of positions	9
Direction of rotation	Standard
Connection profile	8+1
Number (Contact group 1)	1
Contact diameter (Contact group 1)	2 mm
Litz wires Min. cross section (Contact group 1)	0.08 mm ²
Litz wires Max. cross section (Contact group 1)	2.5 mm ²
Rated current Contact (Contact group 1)	20 A (for max. connection cross section)
Rated voltage Contact (Contact group 1)	48 V AC 74 V DC
Rated surge voltage	1.5 kV
Overvoltage category	III
Degree of pollution	3
Number (Contact group 2)	8
Contact diameter (Contact group 2)	1 mm
Litz wires Max. cross section (Contact group 2)	1 mm ²
Rated current Contact (Contact group 2)	8 A
Rated voltage Contact (Contact group 2)	48 V AC 48 V AC

Housing

Order information:	Order contact inserts and cable clamping separately
Type	Cable connector housing
Thread type	M23
Design	angled
Type of locking	Screw locking mechanism
Pg screw connection	Pg13,5
Material (Housing)	GD-Zn

RC-09P1N12Z300 - Device connector rear mounting



1595341

<https://www.phoenixcontact.com/us/products/1595341>

Material (Housing surface)	Ni
Material (Rotating parts)	CuZn
Degree of protection (plugged in)	IP65
	IP67

RC-09P1N12Z300 - Device connector rear mounting



1595341

<https://www.phoenixcontact.com/us/products/1595341>

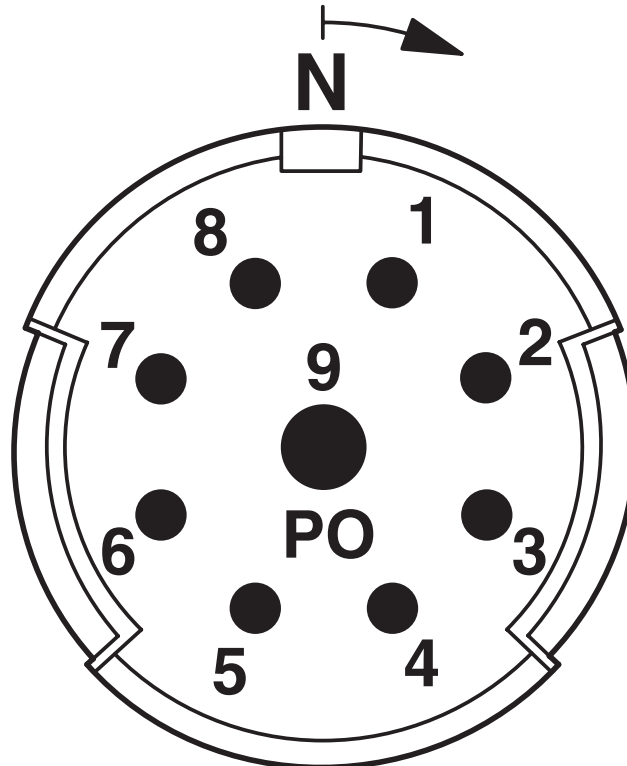
Drawings

Schematic diagram



Connector pin assignment

Schematic diagram



Connector pin assignment

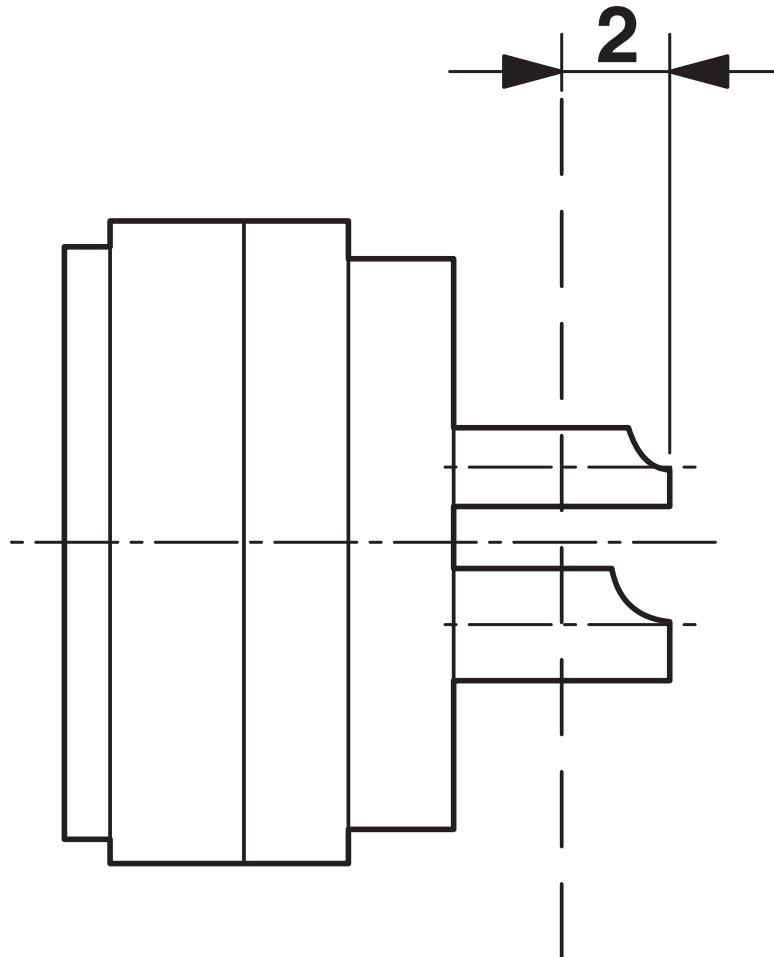
RC-09P1N12Z300 - Device connector rear mounting



1595341

<https://www.phoenixcontact.com/us/products/1595341>

Schematic diagram



Dimensional drawing

RC-09P1N12Z300 - Device connector rear mounting



1595341

<https://www.phoenixcontact.com/us/products/1595341>

Classifications

UNSPSC

UNSPSC 21.0	39121400
-------------	----------

1595341

<https://www.phoenixcontact.com/us/products/1595341>

Environmental product compliance

EU RoHS

Fulfills EU RoHS substance requirements	Yes
Exemption	6(c)

China RoHS

Environment friendly use period (EFUP)	EFUP-50
	An article-related China RoHS declaration table can be found in the download area for the respective article under "Manufacturer declaration". For all articles with EFUP-E, no China RoHS declaration table issued and required.

EU REACH SVHC

REACH candidate substance (CAS No.)	Lead(CAS: 7439-92-1)
SCIP	d6c7617a-52ba-4ca6-b3a7-58cdc63d90fe

Phoenix Contact 2026 © - all rights reserved

<https://www.phoenixcontact.com>

Phoenix Contact USA
586 Fulling Mill Road
Middletown, PA 17057, United States
(+717) 944-1300
info@phoenixcon.com