

# RC-09P1N12K0K5 - Cable connector



1595192

<https://www.phoenixcontact.com/us/products/1595192>

Please be informed that the data shown in this PDF document is generated from our online catalog. Please find the complete data in the user documentation. Our general terms of use for downloads are valid.



M23, Cable connector, application: Signal, series: RC, straight plastic-sheathed, shielded: yes, Screw locking mechanism, No. of pos.: 8+1, Direction of rotation: Standard, contact connection type: Pin, Solder cup, coding: N

The figure shows the 12-pos.  
product version

## Commercial data

Item number	1595192
Packing unit	20 pc
Minimum order quantity	1 pc
Note	Made to order (non-returnable)
Product key	ABRAFA
GTIN	4046356205573
Weight per piece (including packing)	39.14 g
Weight per piece (excluding packing)	39.14 g
Country of origin	DE

# RC-09P1N12K0K5 - Cable connector



1595192

<https://www.phoenixcontact.com/us/products/1595192>

## Technical data

### Product properties

Product type	Circular connector (cable-side)
--------------	---------------------------------

### Connector

#### Insulating body

Coding	N
Material (Insulating body)	PBT
Material (Contact)	CuZn
Material (Contact surface)	Ni/Au
Insertion/withdrawal cycles	50
Connection method	Solder cup
Contact switching type	Pin
Application	Signal
Number of positions	9
Direction of rotation	Standard
Connection profile	8+1
Number (Contact group 1)	1
Contact diameter (Contact group 1)	2 mm
Litz wires Min. cross section (Contact group 1)	0.08 mm <sup>2</sup>
Litz wires Max. cross section (Contact group 1)	2.5 mm <sup>2</sup>
Rated current Contact (Contact group 1)	20 A (for max. connection cross section)
Rated voltage Contact (Contact group 1)	48 V AC 74 V DC
Rated surge voltage	1.5 kV
Overvoltage category	III
Degree of pollution	3
Number (Contact group 2)	8
Contact diameter (Contact group 2)	1 mm
Litz wires Max. cross section (Contact group 2)	1 mm <sup>2</sup>
Rated current Contact (Contact group 2)	8 A
Rated voltage Contact (Contact group 2)	48 V AC 48 V AC

#### Housing

Type	Cable connector housing
Thread type	M23
Design	straight plastic-sheathed
Type of locking	Screw locking mechanism
Pg screw connection	none
Material (Housing)	GD-Zn
Material (Rotating parts)	CuZn

# RC-09P1N12K0K5 - Cable connector



1595192

<https://www.phoenixcontact.com/us/products/1595192>

Degree of protection (plugged in)	IP67
-----------------------------------	------

# RC-09P1N12K0K5 - Cable connector



1595192

<https://www.phoenixcontact.com/us/products/1595192>

## Drawings

Schematic diagram



Connector pin assignment

# RC-09P1N12K0K5 - Cable connector

1595192

<https://www.phoenixcontact.com/us/products/1595192>

Schematic diagram



Connector pin assignment

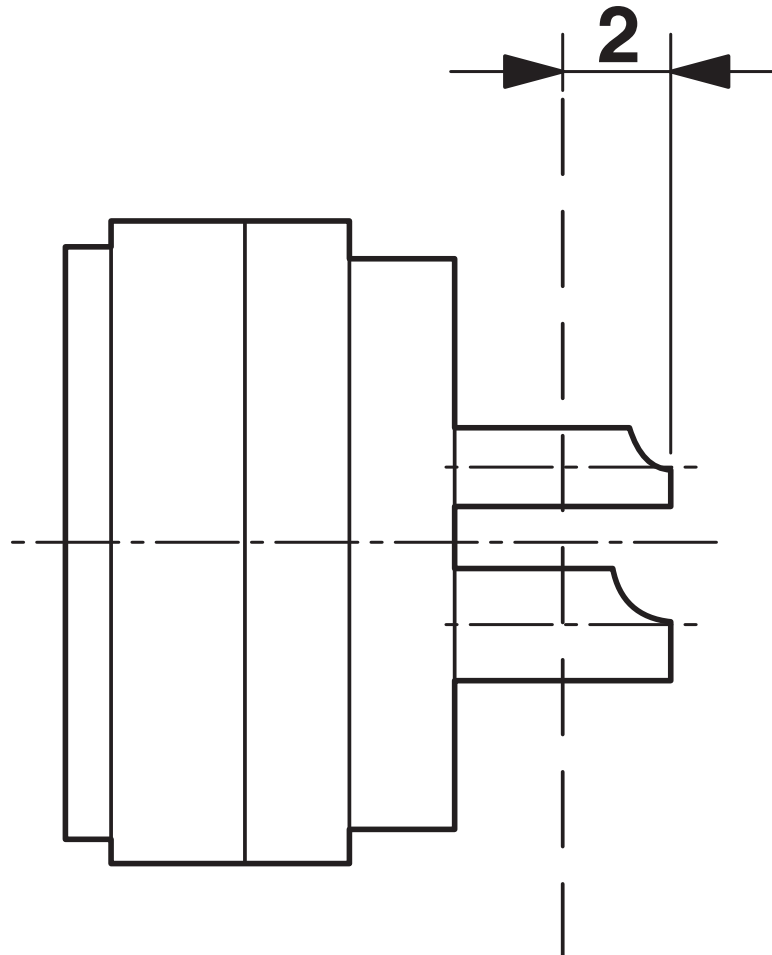
# RC-09P1N12K0K5 - Cable connector



1595192

<https://www.phoenixcontact.com/us/products/1595192>

Schematic diagram



Dimensional drawing

Phoenix Contact 2026 © - all rights reserved  
<https://www.phoenixcontact.com>

Phoenix Contact USA  
586 Fulling Mill Road  
Middletown, PA 17057, United States  
(+717) 944-1300  
[info@phoenixcon.com](mailto:info@phoenixcon.com)