

# RC-09P1N12H100 - Device connector rear mounting



1595179

<https://www.phoenixcontact.com/us/products/1595179>

Please be informed that the data shown in this PDF document is generated from our online catalog. Please find the complete data in the user documentation. Our general terms of use for downloads are valid.



M23, Device connector rear mounting, application: Signal, series: RC, straight, shielded: yes, Screw locking mechanism, No. of pos.: 8+1, Direction of rotation: Standard, contact connection type: Pin, Solder cup, Axial O-ring, Panel thickness min.: 0.8 mm, Panel thickness max.: 6.5 mm, coding: N

The figure shows the 12-pos.  
product version

## Commercial data

|                                      |                                |
|--------------------------------------|--------------------------------|
| Item number                          | 1595179                        |
| Packing unit                         | 20 pc                          |
| Minimum order quantity               | 1 pc                           |
| Note                                 | Made to order (non-returnable) |
| Product key                          | ABRAFR                         |
| GTIN                                 | 4046356205504                  |
| Weight per piece (including packing) | 61.95 g                        |
| Weight per piece (excluding packing) | 61.95 g                        |
| Country of origin                    | DE                             |

# RC-09P1N12H100 - Device connector rear mounting



1595179

<https://www.phoenixcontact.com/us/products/1595179>

## Technical data

### Product properties

|              |                                   |
|--------------|-----------------------------------|
| Product type | Circular connectors (device side) |
|--------------|-----------------------------------|

### Material specifications

|                  |       |
|------------------|-------|
| Housing material | Metal |
|------------------|-------|

### Connector

#### Insulating body

|                                                 |                                          |
|-------------------------------------------------|------------------------------------------|
| Coding                                          | N                                        |
| Material (Insulating body)                      | PBT                                      |
| Material (Contact)                              | CuZn                                     |
| Material (Contact surface)                      | Ni/Au                                    |
| Insertion/withdrawal cycles                     | 50                                       |
| Connection method                               | Solder cup                               |
| Contact switching type                          | Pin                                      |
| Application                                     | Signal                                   |
| Number of positions                             | 9                                        |
| Direction of rotation                           | Standard                                 |
| Connection profile                              | 8+1                                      |
| Number (Contact group 1)                        | 1                                        |
| Contact diameter (Contact group 1)              | 2 mm                                     |
| Litz wires Min. cross section (Contact group 1) | 0.08 mm <sup>2</sup>                     |
| Litz wires Max. cross section (Contact group 1) | 2.5 mm <sup>2</sup>                      |
| Rated current Contact (Contact group 1)         | 20 A (for max. connection cross section) |
| Rated voltage Contact (Contact group 1)         | 48 V AC<br>74 V DC                       |
| Rated surge voltage                             | 1.5 kV                                   |
| Overvoltage category                            | III                                      |
| Degree of pollution                             | 3                                        |
| Number (Contact group 2)                        | 8                                        |
| Contact diameter (Contact group 2)              | 1 mm                                     |
| Litz wires Max. cross section (Contact group 2) | 1 mm <sup>2</sup>                        |
| Rated current Contact (Contact group 2)         | 8 A                                      |
| Rated voltage Contact (Contact group 2)         | 48 V AC<br>48 V AC                       |

#### Housing

|                 |                         |
|-----------------|-------------------------|
| Type            | Feed-through header     |
| Thread type     | M23                     |
| Design          | straight                |
| Type of locking | Screw locking mechanism |

# RC-09P1N12H100 - Device connector rear mounting



1595179

<https://www.phoenixcontact.com/us/products/1595179>

|                                   |                           |
|-----------------------------------|---------------------------|
| Pg screw connection               | none                      |
| Mounting type                     | Rear mounting (M25 x 1,5) |
| Assembly note                     | Central fastening         |
| Housing material                  | Metal                     |
| Degree of protection (plugged in) | IP67                      |
| Seal for the device               | Axial O-ring              |

# RC-09P1N12H100 - Device connector rear mounting



1595179

<https://www.phoenixcontact.com/us/products/1595179>

## Drawings

Schematic diagram



Connector pin assignment

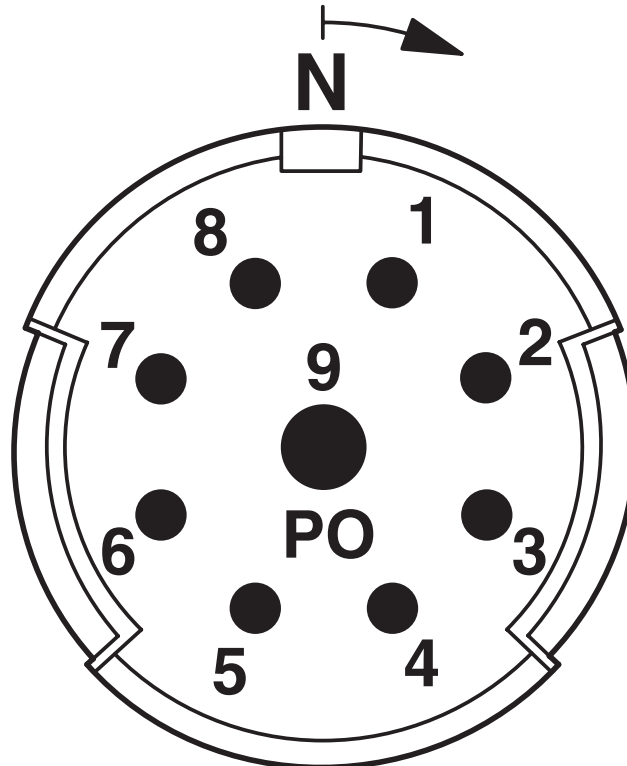
# RC-09P1N12H100 - Device connector rear mounting



1595179

<https://www.phoenixcontact.com/us/products/1595179>

Schematic diagram



Connector pin assignment

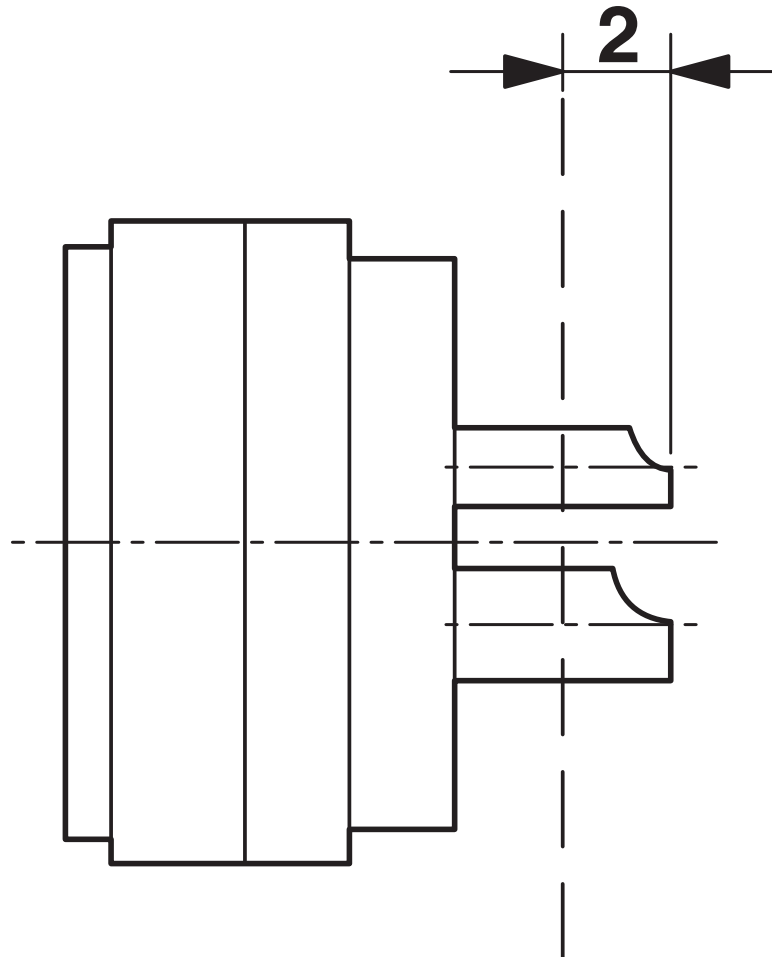
# RC-09P1N12H100 - Device connector rear mounting



1595179

<https://www.phoenixcontact.com/us/products/1595179>

Schematic diagram



Dimensional drawing

Phoenix Contact 2026 © - all rights reserved  
<https://www.phoenixcontact.com>

Phoenix Contact USA  
586 Fulling Mill Road  
Middletown, PA 17057, United States  
(+717) 944-1300  
[info@phoenixcon.com](mailto:info@phoenixcon.com)