

# HC-B 24-SFQD-67/M1M25 - Housing



1586992

<https://www.phoenixcontact.com/us/products/1586992>

Please be informed that the data shown in this PDF document is generated from our online catalog. Please find the complete data in the user documentation. Our general terms of use for downloads are valid.



Box mounting base, for double locking latch, height 67 mm, with screw connection, 1x M25, with protective cover

## Commercial data

|                                      |               |
|--------------------------------------|---------------|
| Item number                          | 1586992       |
| Packing unit                         | 10 pc         |
| Minimum order quantity               | 1 pc          |
| Product key                          | AF7AAC        |
| GTIN                                 | 4046356427081 |
| Weight per piece (including packing) | 553.2 g       |
| Weight per piece (excluding packing) | 500 g         |
| Country of origin                    | DE            |

# HC-B 24-SFQD-67/M1M25 - Housing

1586992

<https://www.phoenixcontact.com/us/products/1586992>

## Technical data

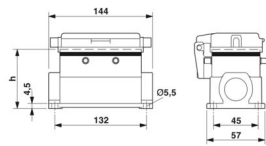
### Notes

|         |  |
|---------|--|
| General | For contact inserts HC-B24, BB46, BBB64, D64, DD108, M |
|---------|--|

### Product properties

|                              |  |
|------------------------------|--|
| Product type                 | Housing with locking latch                 |
| Housing type                 | Surface mounting housing                   |
| Application                  | Standard                                   |
| Type                         | B24  |
| No. of cable outlets         | 1  |
| Type of the screw connection | 1x M25                                     |
| Protective cover             | yes  |
| Shielded                     | no   |
| Cable outlet                 | Left (view of the opened protective cover) |
| Pg screw connection          | with                                       |

### Dimensions

|                        |  |
|------------------------|--|
| Dimensional drawing    |  |
| Width                  | 57 mm  |
| Height                 | 67 mm  |
| Length                 | 144 mm   |
| Wrench size, union nut | 25 mm  |

### Material specifications

|                           |                      |
|---------------------------|----------------------|
| Material Screw connection | Brass, nickel-plated |
| Material Protective cover | PA                   |
| Seal material Cable seal  | NBR                  |
| Housing material          | Die-cast aluminum    |
| Housing surface material  | Powder-coated, gray  |

### Mechanical properties

#### Mechanical data

|                              |        |
|------------------------------|--------|
| Type of the screw connection | 1x M25 |
| Locking type                 | Pin    |

### Cable/line

|                                 |                |
|---------------------------------|----------------|
| External cable diameter Cable 1 | 9 mm ... 18 mm |
|---------------------------------|----------------|

# HC-B 24-SFQD-67/M1M25 - Housing



1586992

<https://www.phoenixcontact.com/us/products/1586992>

## Connection data

|                         |                |
|-------------------------|----------------|
| External cable diameter | 9 mm ... 18 mm |
|-------------------------|----------------|

## Environmental and real-life conditions

### Ambient conditions

|                                 |                        |
|---------------------------------|------------------------|
| Degree of protection            | IP65 (When plugged in) |
| Ambient temperature (operation) | -40 °C ... 125 °C      |

# HC-B 24-SFQD-67/M1M25 - Housing

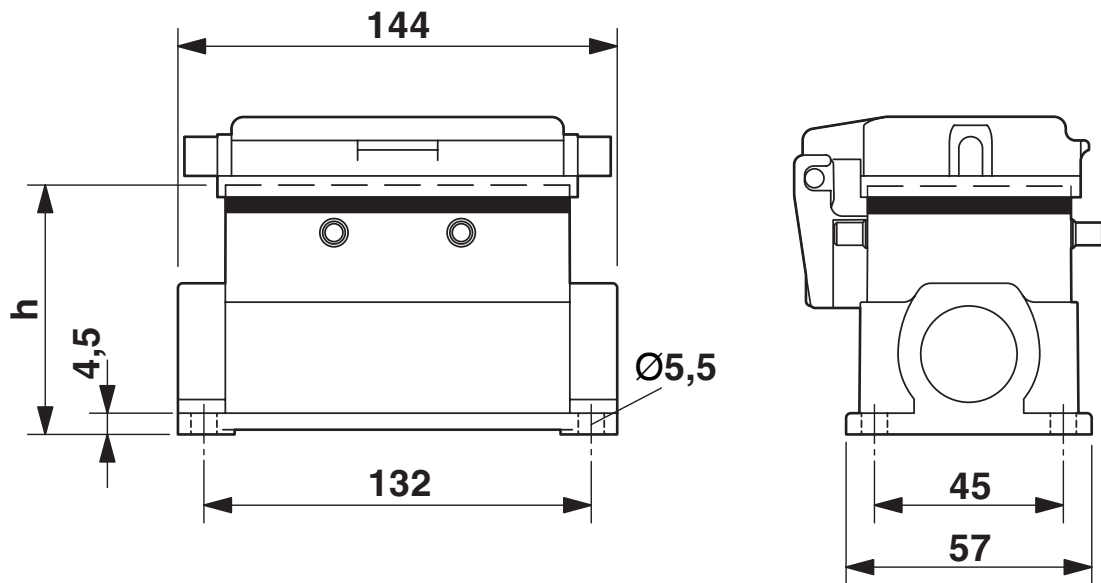
1586992

<https://www.phoenixcontact.com/us/products/1586992>



## Drawings

Dimensional drawing



Dimensional drawing

# HC-B 24-SFQD-67/M1M25 - Housing



1586992

<https://www.phoenixcontact.com/us/products/1586992>

## Classifications

### ECLASS

|             |          |
|-------------|----------|
| ECLASS-13.0 | 27440202 |
| ECLASS-15.0 | 27440202 |

### UNSPSC

|             |          |
|-------------|----------|
| UNSPSC 21.0 | 31261501 |
|-------------|----------|

# HC-B 24-SFQD-67/M1M25 - Housing



1586992

<https://www.phoenixcontact.com/us/products/1586992>

## Environmental product compliance

### EU RoHS

|   |                    |
|---|--------------------|
| Fulfills EU RoHS substance requirements | Yes, No exemptions |
|---|--------------------|

### China RoHS

|  |  |
|--|--|
| Environment friendly use period (EFUP) | EFUP-E                                   |
|  | No hazardous substances above the limits |

### EU REACH SVHC

|                                     |                            |
|-------------------------------------|----------------------------|
| REACH candidate substance (CAS No.) | No substance above 0.1 wt% |
|-------------------------------------|----------------------------|

Phoenix Contact 2026 © - all rights reserved  
<https://www.phoenixcontact.com>

Phoenix Contact USA  
586 Fulling Mill Road  
Middletown, PA 17057, United States  
(+717) 944-1300  
[info@phoenixcon.com](mailto:info@phoenixcon.com)