

# QPD W 4PE2,5 M25 0,5 GY - Panel feed-through



1582577

<https://www.phoenixcontact.com/us/products/1582577>

Please be informed that the data shown in this PDF document is generated from our online catalog. Please find the complete data in the user documentation. Our general terms of use for downloads are valid.



Panel feed-through, connection method: Single wires (Welded-on), number of positions: 4+PE, M25, Pin, 1 mm<sup>2</sup> ... 2.5 mm<sup>2</sup>, 690 V, 20 A, PA, gray, without QUICKON nut, coding: coded, 2.5 mm<sup>2</sup>, wires cut flat at the end, cable length: 0.5 m

## Commercial data

|                                      |               |
|--------------------------------------|---------------|
| Item number                          | 1582577       |
| Packing unit                         | 1 pc          |
| Minimum order quantity               | 1 pc          |
| Product key                          | AF6ABB        |
| GTIN                                 | 4046356662079 |
| Weight per piece (including packing) | 112.5 g       |
| Weight per piece (excluding packing) | 112.5 g       |
| Country of origin                    | DE            |

# QPD W 4PE2,5 M25 0,5 GY - Panel feed-through



1582577

<https://www.phoenixcontact.com/us/products/1582577>

## Technical data

### Product properties

|                                    |                    |
|------------------------------------|--------------------|
| Product type                       | Panel feed-through |
| Product family                     | QPD                |
| Type                               | QPD 5x2,5          |
| Number of positions                | 5                  |
| Connection profile                 | 4+PE               |
| Position marking                   | 1, 2, L, N, PE     |
| Number of connections              | 10                 |
| Number of connections per position | 1                  |
| Coding                             | coded              |

### Insulation characteristics

|                      |     |
|----------------------|-----|
| Overvoltage category | III |
| Degree of pollution  | 3   |

### Connection data

#### Connection technology

|   |                          |
|---|--------------------------|
| Connection method On the device side                                  | Single wires (Welded-on) |
| Frequency of connections between conductors of the same cross section | max. 10                  |

#### Conductor connection

|                                  |   |
|----------------------------------|---|
| Conductor cross-section flexibel | 1 mm <sup>2</sup> ... 2.5 mm <sup>2</sup> |
| Conductor cross-section solid    | 1 mm <sup>2</sup> ... 2.5 mm <sup>2</sup> |
| Connection cross section AWG     | 16 ... 14                                 |
| Tightening torque Union nut      | 10 Nm                                     |
| Tightening torque Locking nut    | 5 Nm                                      |
| Wrench size Union nut            | 27 mm                                     |
| Wrench size Locking nut          | 30 mm                                     |

#### Connection assignment

|   |           |
|---|-----------|
| Contact   Color (signal designation)   Contact (optional) | 1   BK    |
|   | 2   BN    |
|   | 3   GY    |
|   | N   BU    |
|   | PE   GNYE |

### Dimensions

|                     |  |
|---------------------|--|
| Dimensional drawing |  |
|---------------------|--|

# QPD W 4PE2,5 M25 0,5 GY - Panel feed-through



1582577

<https://www.phoenixcontact.com/us/products/1582577>

|                          |         |
|--------------------------|---------|
| Width                    | 33.4 mm |
| Height                   | 33.4 mm |
| Length                   | 53.2 mm |
| Wrench size              | 27 mm   |
| Wrench size for mounting | 27 mm   |

## Electrical properties

|                             |        |
|-----------------------------|--------|
| Rated surge voltage (II/2)  | 8 kV   |
| Rated surge voltage (III/2) | 8 kV   |
| Rated surge voltage (III/3) | 6 kV   |
| Rated current               | 20 A   |
| Contact resistance          | < 3 mΩ |
| rated voltage (II/2)        | 1000 V |
| rated voltage (III/2)       | 1000 V |
| Rated voltage (III/3)       | 690 V  |
| Nominal voltage $U_N$       | 690 V  |
| Nominal current $I_N$       | 20 A   |

## Material specifications

|  |                   |
|--|-------------------|
| Material Housing                       | PA                |
| Material Contact                       | Cu                |
| Material Contact surface               | silver-plated     |
| Flammability rating according to UL 94 | V0                |
| Material wire insulation               | PVC/PE/TPE/rubber |

## Cable/line

|   |  |
|---|--|
| Cable length  | 0.5 m                                  |
| Structure of individual litz in acc. with VDE 0295 / smallest wire diameter | VDE 0295 class 1 to 6/min. 0.15 mm     |
| Wire diameter including insulation  | 2 mm ... 3.8 mm                        |
| Position marking  | 1, 2, L, N, PE                         |
| Single wire, color  | black, brown, gray, blue, green/yellow |
| Cable cross section   | 2.5 mm <sup>2</sup>                    |
| Material wire insulation  | PVC/PE/TPE/rubber                      |

## Mounting

|               |                    |
|---------------|--------------------|
| Mounting type | Front mounting M25 |
|---------------|--------------------|

## Environmental and real-life conditions

### Ambient conditions

|                      |                   |
|----------------------|-------------------|
| Degree of protection | IP66              |
|                      | IP68 (2 m / 24 h) |
|                      | IP69K             |
| Impact strength      | IK07              |

# QPD W 4PE2,5 M25 0,5 GY - Panel feed-through



1582577

<https://www.phoenixcontact.com/us/products/1582577>

|   |                   |
|---|-------------------|
| Ambient temperature (operation)         | -40 °C ... 100 °C |
| Temperature when conductor connected    | -5 °C ... 50 °C   |
| Ambient temperature (storage/transport) | -40 °C ... 80 °C  |

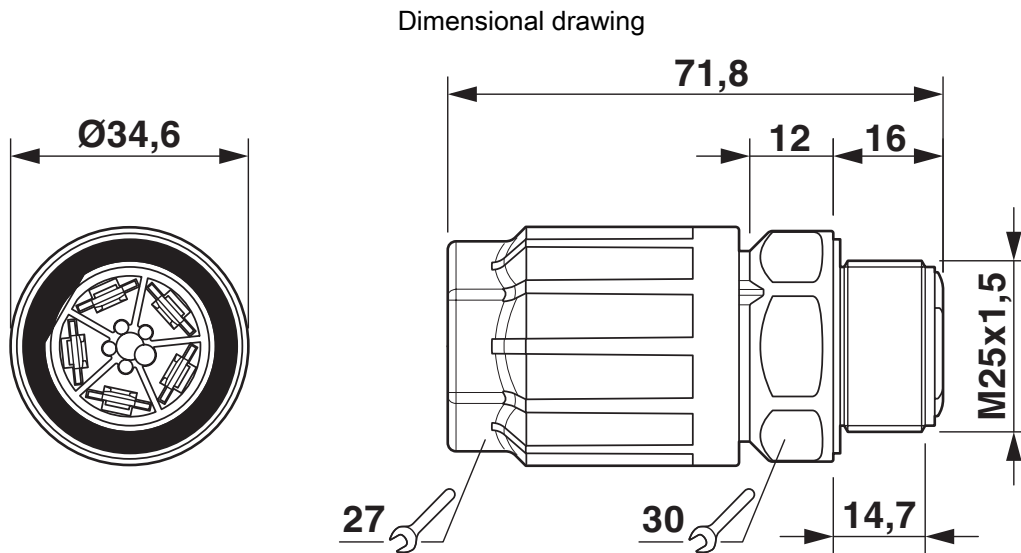
# QPD W 4PE2,5 M25 0,5 GY - Panel feed-through



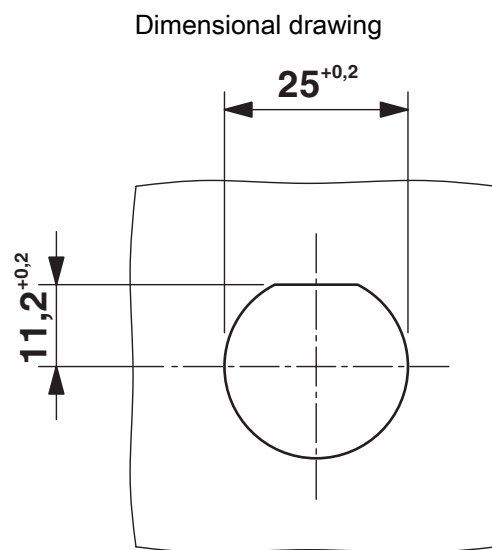
1582577

<https://www.phoenixcontact.com/us/products/1582577>

## Drawings



QPD W 4PE2.5 M25 dimensional drawing



Panel cutout

# QPD W 4PE2,5 M25 0,5 GY - Panel feed-through



1582577

<https://www.phoenixcontact.com/us/products/1582577>

## Classifications

### ECLASS

|             |          |
|-------------|----------|
| ECLASS-13.0 | 27440602 |
| ECLASS-15.0 | 27440602 |

### ETIM

|          |          |
|----------|----------|
| ETIM 9.0 | EC002566 |
|----------|----------|

# QPD W 4PE2,5 M25 0,5 GY - Panel feed-through



1582577

<https://www.phoenixcontact.com/us/products/1582577>

## Environmental product compliance

### EU RoHS

|   |                    |
|---|--------------------|
| Fulfills EU RoHS substance requirements | Yes, No exemptions |
|---|--------------------|

### China RoHS

|  |   |
|--|---|
| Environment friendly use period (EFUP) | EFUP-50   |
|  | An article-related China RoHS declaration table can be found in the download area for the respective article under "Manufacturer declaration". For all articles with EFUP-E, no China RoHS declaration table issued and required. |

### EU REACH SVHC

|                                     |                            |
|-------------------------------------|----------------------------|
| REACH candidate substance (CAS No.) | No substance above 0.1 wt% |
|-------------------------------------|----------------------------|

Phoenix Contact 2026 © - all rights reserved

<https://www.phoenixcontact.com>

Phoenix Contact USA  
586 Fulling Mill Road  
Middletown, PA 17057, United States  
(+717) 944-1300  
[info@phoenixcon.com](mailto:info@phoenixcon.com)