

PTCB BE PT 6 - Base element

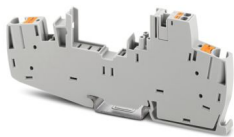


1567576

<https://www.phoenixcontact.com/us/products/1567576>

Please be informed that the data shown in this PDF document is generated from our online catalog. Please find the complete data in the user documentation. Our general terms of use for downloads are valid.

Base element, mounting type: DIN rail: TH 35 - 7.5 mm, rated current: 31 A



Your advantages

- More space in control cabinets thanks to only 8 mm overall width
- Simple application setup due to bridging option to CLIPLINE complete terminal block system
- Transparency regarding the utilization and status of the system thanks to integrated connections for individual or collective signals
- Easy commissioning and maintenance thanks to pre-installable wiring that remains untouched when replacing the connector

Commercial data

| | |
|--------------------------------------|---------------|
| Item number | 1567576 |
| Packing unit | 1 pc |
| Sales key | CL10 |
| Product key | CLA197 |
| GTIN | 4067923054332 |
| Weight per piece (including packing) | 40.1 g |
| Weight per piece (excluding packing) | 28.01 g |
| Customs tariff number | 85366990 |
| Country of origin | TR |

1567576

<https://www.phoenixcontact.com/us/products/1567576>

Technical data

Notes

General

| | |
|------|--|
| Note | The base element does not contain any electronic circuits. |
|------|--|

Product properties

| | |
|-------------------------|---------------------|
| Product type | Base element |
| Mechanical service life | 25 insertion cycles |

Insulation characteristics

| | |
|----------------------|---------------------------|
| Overvoltage category | II (250 V AC / IEC 60934) |
| | III (UL 1077, UL 1059) |
| | III (80 V DC / IEC 60934) |
| Pollution degree | 2 (250 V AC / IEC 60934) |
| | 3 (UL 1077, UL 1059) |

Electrical properties

General

| | |
|---------------------------------|--|
| Rated voltage | 240 V AC (IEC 60934) |
| | 277 V AC (UL 1077) |
| | 277 V AC (UL 1059) |
| | 56 V DC (IEC 60934) |
| | 56 V DC (UL 1077) |
| | 56 V DC (UL 1059) |
| Rated insulation voltage U_i | 250 V AC (IEC 60934) |
| | 80 V DC (IEC 60934) |
| | 277 V AC (UL 1077) |
| | 277 V AC (UL 1059) |
| Rated current I_N | 31 A (UL 1059, without device circuit breaker) |
| | 16 A (Main contacts 1-2, UL 1077 and IEC 60934) |
| | 1 A (Auxiliary contacts 3-4, without device circuit breaker) |
| Rated surge voltage | 2.5 kV (IEC 60934, reinforced insulation between load and auxiliary circuit) |
| Insulation resistance R_{ISO} | > 100 M Ω (500 V DC) |
| Dielectric strength | 3000 V AC (between load circuit 1-2 and auxiliary circuit 3-4) |
| | 1554 V AC (between open load contacts 1-2, auxiliary contacts 3-4) |

Indicator/remote signaling

| | |
|-----------------|------------------|
| Connection name | Connection 3 / 4 |
|-----------------|------------------|

Connection data

Connection 1 / 2

PTCB BE PT 6 - Base element



1567576

<https://www.phoenixcontact.com/us/products/1567576>

| | |
|---|---|
| Connection method | Push-in connection |
| Stripping length | 12 mm |
| Conductor cross-section flexible | 0.5 mm ² ... 10 mm ² |
| Conductor cross-section rigid | 0.5 mm ² ... 10 mm ² 1 mm ² ... 10 mm ² (direct plug-in) |
| Conductor cross-section AWG | 20 ... 8 |
| Conductor cross-section, flexible, with ferrule, with plastic sleeve | 0.5 mm ² ... 6 mm ² 1 mm ² ... 6 mm ² (direct plug-in) |
| Conductor cross-section, flexible, with ferrule, without plastic sleeve | 0.5 mm ² ... 6 mm ² 1 mm ² ... 6 mm ² (direct plug-in) |

Connection 3 / 4

| | |
|---|--|
| Connection method | Push-in connection |
| Stripping length | 8 mm |
| Conductor cross-section flexible | 0.14 mm ² ... 1.5 mm ² |
| Conductor cross-section rigid | 0.14 mm ² ... 1.5 mm ² |
| Conductor cross-section AWG | 26 ... 16 |
| Conductor cross-section, flexible, with ferrule, with plastic sleeve | 0.14 mm ² ... 1.5 mm ² |
| Conductor cross-section, flexible, with ferrule, without plastic sleeve | 0.14 mm ² ... 1.5 mm ² |

Dimensions

| | |
|------------------------|----------|
| Dimensional drawing | |
| Width | 8.2 mm |
| Height | 122.9 mm |
| Depth | 54.1 mm |
| Complete module width | 8.2 mm |
| Complete module height | 122.9 mm |
| Complete module depth | 85.2 mm |

Material specifications

| | |
|--|-----------------|
| Color | gray (RAL 7042) |
| Material | PA |
| Flammability rating according to UL 94 | V-0 |
| Insulating material group | I |

Mechanical properties

Mechanical data

| | |
|-----------------|----|
| Open side panel | No |
|-----------------|----|

Environmental and real-life conditions

PTCB BE PT 6 - Base element



1567576

<https://www.phoenixcontact.com/us/products/1567576>

Ambient conditions

| | |
|---|---|
| Degree of protection | IP20 |
| Ambient temperature (operation) | -30 °C ... 60 °C |
| Ambient temperature (storage/transport) | -40 °C ... 80 °C |
| Altitude | ≤ 2000 m (250 V AC / IEC 60934) |
| Humidity test | 96 h, 95 % RH, 40 °C |
| Shock (operation) | 30g (IEC 60068-2-27, Test Ea) Category 1, Class B (DIN EN 61373) |
| Vibration (operation) | 10 Hz ... 150 Hz, 20 cycles (IEC 60068-2-6, Test Fc) |
| | 10 Hz ... 75 Hz (Amplitude ±0.35 mm; in accordance with IEC 60068-2-6, Test Fc) |
| | 75 Hz ... 150 Hz (8g) |
| | Category 1, Class B (DIN EN 61373) |

Approvals

UL approval

| | |
|----------------|-----------------------|
| Identification | UL Recognized UL 1059 |
| | UL Recognized UL 1077 |

CSA, Canada

| | |
|----------------|----------------------|
| Identification | CSA C22.2 No. 235-04 |
|----------------|----------------------|

Standards and regulations

| | |
|--------------------------|--|
| Standards/specifications | IEC 60934 |
| Note | 2019 |
| Standards/specifications | UL 1077 |
| Note | Additional protective devices for use in electrical equipment |
| Standards/specifications | UL 1059 |
| Note | Terminal blocks |
| Standards/specifications | CSA C22.2 No. 235-04 |
| Note | 2017 |
| Standards/specifications | IEC 60068-2-6 |
| Note | Environmental influences – Vibrations (sinusoidal) |
| Standards/specifications | EN 60068-2-27 |
| Note | Environmental influences – Shocks |
| Standards/specifications | EN 60068-2-78 |
| Note | Environmental influences – Moisture and heat, constant |
| Standards/specifications | DIN EN 50274 |
| Note | Touch protection and back-of-hand safety |
| Standards/specifications | IEC 60529 |
| Note | 2019 |
| Standards/specifications | EN 61373 |
| Note | Railway applications - Rolling stock equipment - Shock and vibration tests |

PTCB BE PT 6 - Base element



1567576

<https://www.phoenixcontact.com/us/products/1567576>

| | |
|--------------------------|---|
| Standards/specifications | EN 45545-2 |
| Note | Railway applications - Fire protection on railway vehicles - Part 2: Requirements for fire behavior of materials and components |

Mounting

| | |
|---------------|--------------------------|
| Mounting type | DIN rail: TH 35 - 7.5 mm |
|---------------|--------------------------|

PTCB BE PT 6 - Base element

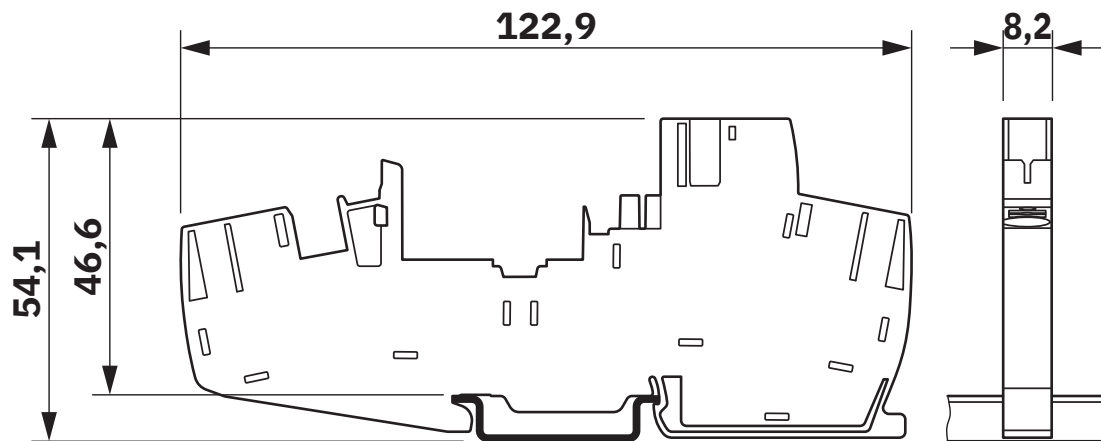
1567576

<https://www.phoenixcontact.com/us/products/1567576>

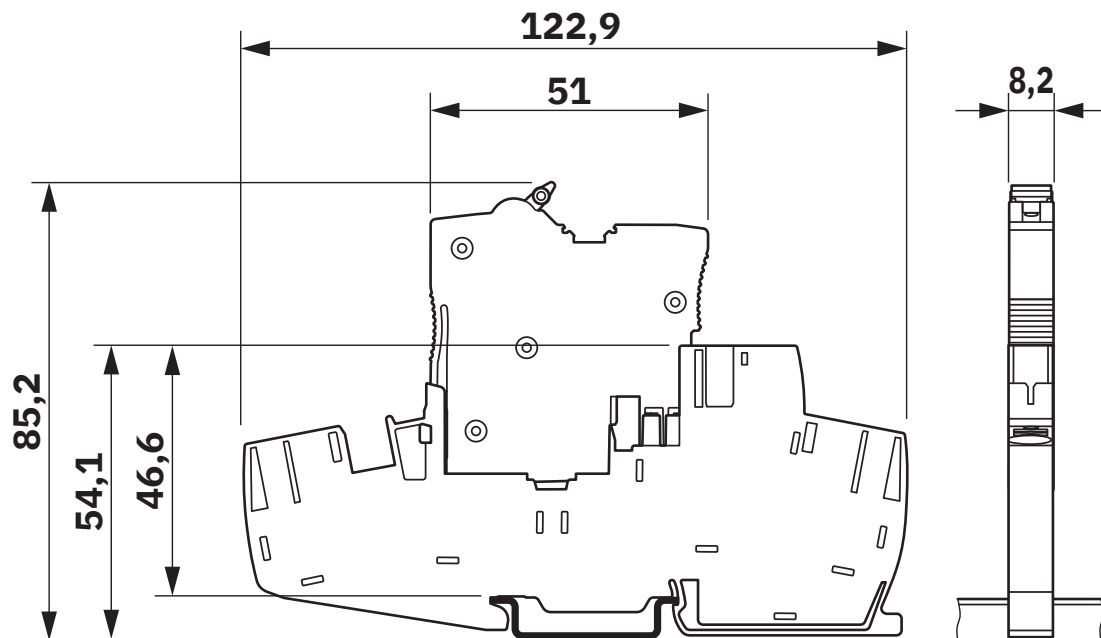


Drawings

Dimensional drawing



Dimensional drawing



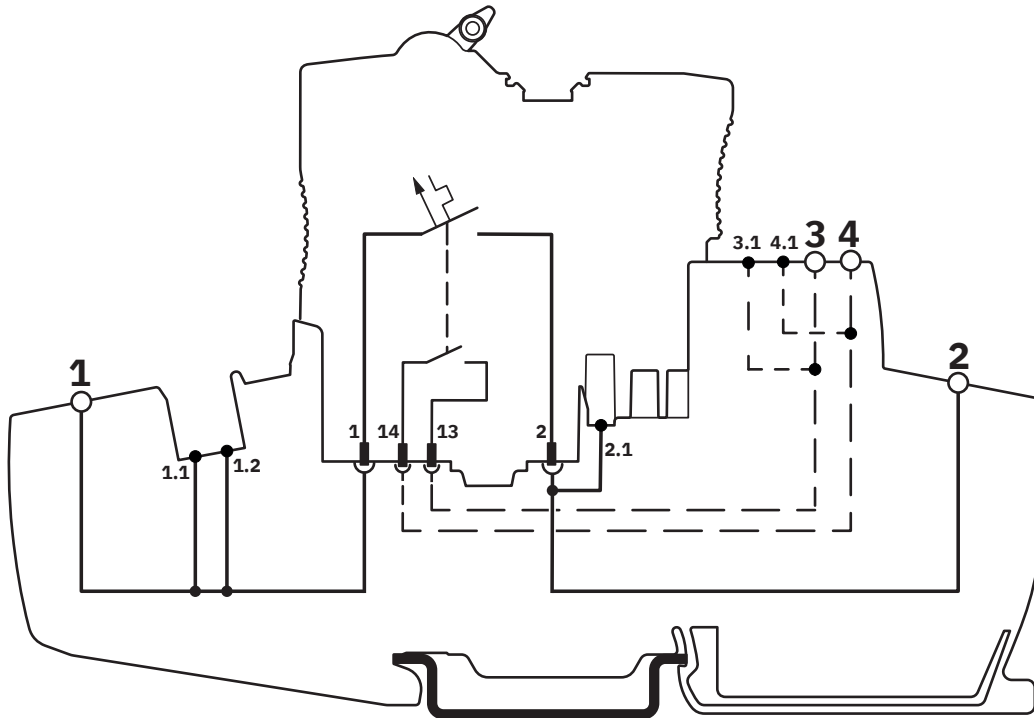
The figure shows the complete module consisting of a base element and connector

PTCB BE PT 6 - Base element

1567576

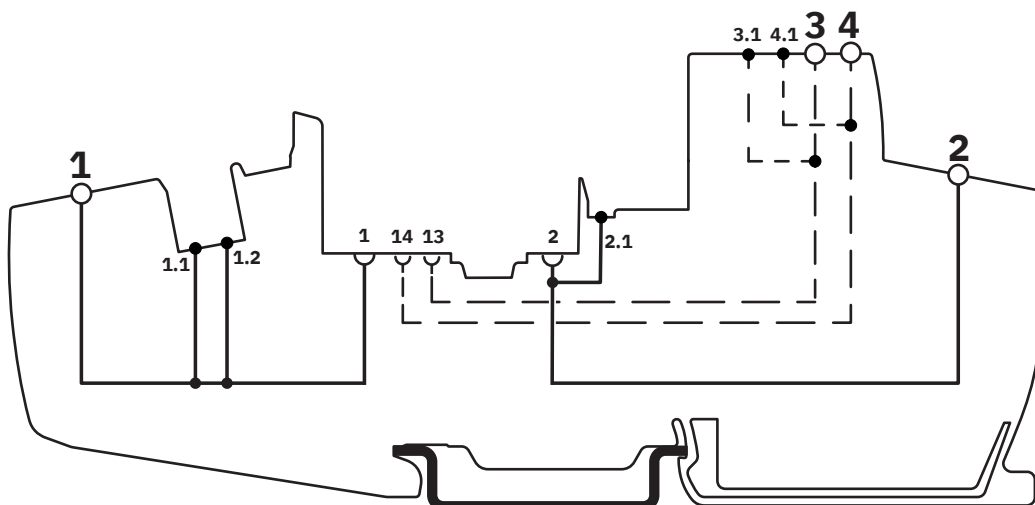
<https://www.phoenixcontact.com/us/products/1567576>

Connection diagram



The figure shows the product in conjunction with a male connector

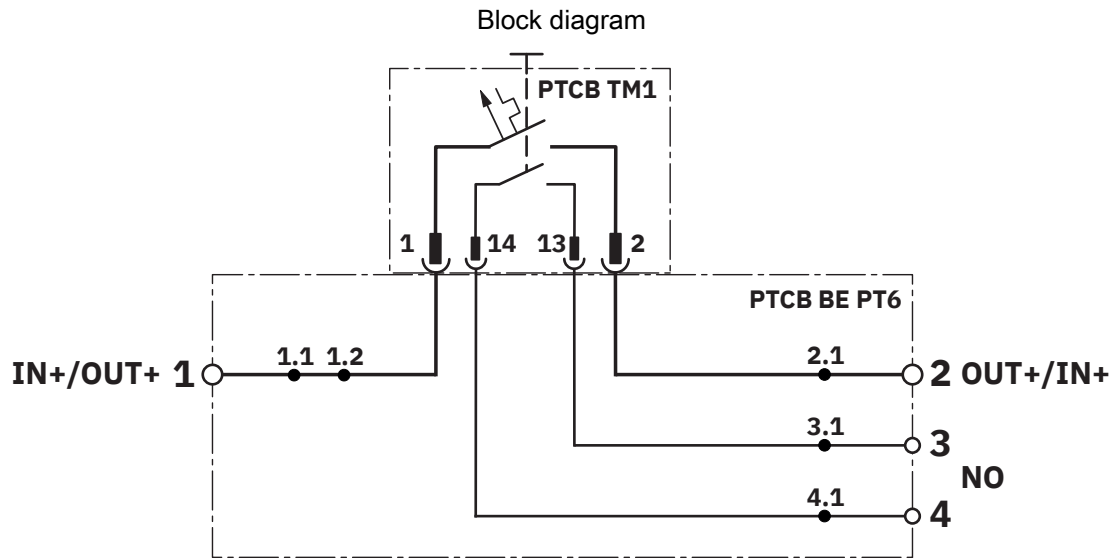
Connection diagram



PTCB BE PT 6 - Base element

1567576

<https://www.phoenixcontact.com/us/products/1567576>



PTCB BE PT 6 - Base element



1567576

<https://www.phoenixcontact.com/us/products/1567576>

Approvals

To download certificates, visit the product detail page: <https://www.phoenixcontact.com/us/products/1567576>



IECEE CB Scheme
Approval ID: DE1-69241



cULus Recognized
Approval ID: E60425

PTCB BE PT 6 - Base element



1567576

<https://www.phoenixcontact.com/us/products/1567576>

Classifications

ECLASS

| | |
|-------------|----------|
| ECLASS-13.0 | 27140401 |
| ECLASS-15.0 | 27140401 |

ETIM

| | |
|-----------|----------|
| ETIM 10.0 | EC003538 |
|-----------|----------|

PTCB BE PT 6 - Base element



1567576

<https://www.phoenixcontact.com/us/products/1567576>

Environmental product compliance

EU RoHS

| | |
|---|--------------------|
| Fulfills EU RoHS substance requirements | Yes, No exemptions |
|---|--------------------|

China RoHS

| | |
|--|--|
| Environment friendly use period (EFUP) | EFUP-E |
| | No hazardous substances above the limits |

EU REACH SVHC

| | |
|-------------------------------------|----------------------------|
| REACH candidate substance (CAS No.) | No substance above 0.1 wt% |
|-------------------------------------|----------------------------|

Phoenix Contact 2026 © - all rights reserved
<https://www.phoenixcontact.com>

Phoenix Contact USA
586 Fulling Mill Road
Middletown, PA 17057, United States
(+717) 944-1300
info@phoenixcon.com