

# HC-B 16-SMQ-84/O2PG29 - Housing



1460187

<https://www.phoenixcontact.com/us/products/1460187>

Please be informed that the data shown in this PDF document is generated from our online catalog. Please find the complete data in the user documentation. Our general terms of use for downloads are valid.



HEAVYCON B16 box mounting base, with double locking latch, height: 84 mm, with 2 x Pg29 glands

## Commercial data

|                                      |               |
|--------------------------------------|---------------|
| Item number                          | 1460187       |
| Packing unit                         | 10 pc         |
| Minimum order quantity               | 1 pc          |
| Product key                          | AF7AAC        |
| GTIN                                 | 4046356696678 |
| Weight per piece (including packing) | 22.22 g       |
| Weight per piece (excluding packing) | 22.22 g       |
| Country of origin                    | DE            |

# HC-B 16-SMQ-84/O2PG29 - Housing

1460187

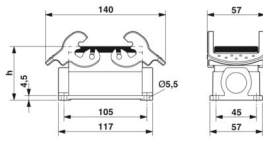
<https://www.phoenixcontact.com/us/products/1460187>

## Technical data

### Product properties

|                              |                            |
|------------------------------|----------------------------|
| Product type                 | Housing with locking latch |
| Housing type                 | Surface mounting housing   |
| Application                  | Standard                   |
| Type                         | B16                        |
| No. of cable outlets         | 2                          |
| Type of the screw connection | 2x Pg29                    |
| Shielded                     | no                         |
| Cable outlet                 | lateral                    |
| Pg screw connection          | none                       |

### Dimensions

|                     |   |
|---------------------|---|
| Dimensional drawing |  |
| Width               | 57 mm   |
| Height              | 84 mm   |
| Length              | 117 mm  |

### Material specifications

|                          |                             |
|--------------------------|-----------------------------|
| Seal material            | NBR                         |
| Housing material         | Die-cast aluminum           |
| Housing surface material | Powder-coated, gray         |
| Locking latch material   | Stainless steel, handle: PA |

### Mechanical properties

#### Mechanical data

|                              |         |
|------------------------------|---------|
| Type of the screw connection | 2x Pg29 |
| Locking type                 | Latch   |

### Environmental and real-life conditions

#### Ambient conditions

|                                 |                   |
|---------------------------------|-------------------|
| Degree of protection            | IP65              |
| Ambient temperature (operation) | -40 °C ... 125 °C |

# HC-B 16-SMQ-84/O2PG29 - Housing

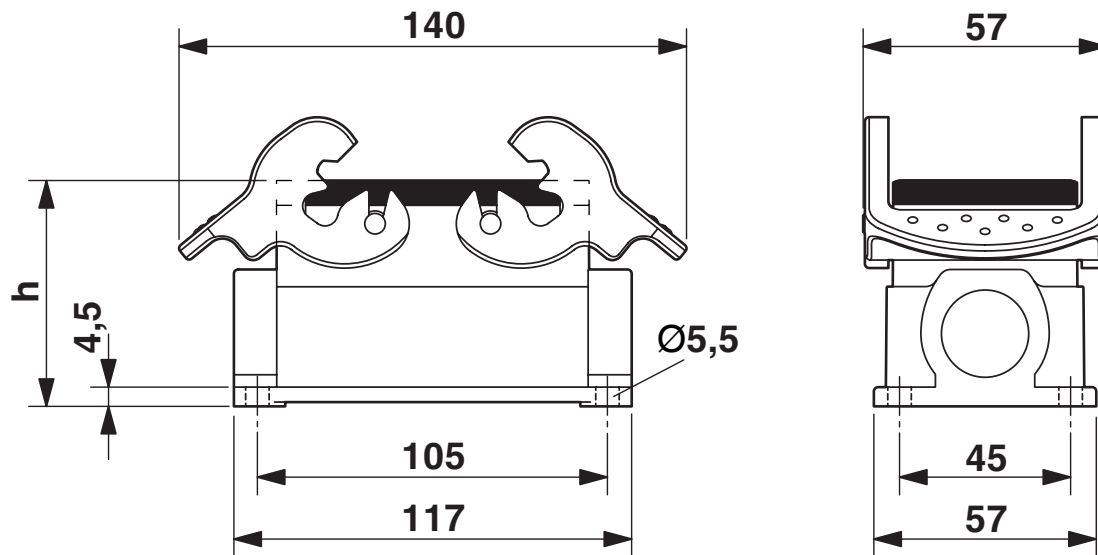


1460187

<https://www.phoenixcontact.com/us/products/1460187>

## Drawings

Dimensional drawing



# HC-B 16-SMQ-84/O2PG29 - Housing



1460187

<https://www.phoenixcontact.com/us/products/1460187>

## Classifications

### ECLASS

|             |          |
|-------------|----------|
| ECLASS-13.0 | 27440202 |
| ECLASS-15.0 | 27440202 |

# HC-B 16-SMQ-84/O2PG29 - Housing



1460187

<https://www.phoenixcontact.com/us/products/1460187>

## Environmental product compliance

### EU RoHS

|   |                    |
|---|--------------------|
| Fulfills EU RoHS substance requirements | Yes, No exemptions |
|---|--------------------|

### EU REACH SVHC

|                                     |                            |
|-------------------------------------|----------------------------|
| REACH candidate substance (CAS No.) | No substance above 0.1 wt% |
|-------------------------------------|----------------------------|

Phoenix Contact 2026 © - all rights reserved

<https://www.phoenixcontact.com>

Phoenix Contact USA  
586 Fulling Mill Road  
Middletown, PA 17057, United States  
(+717) 944-1300  
[info@phoenixcon.com](mailto:info@phoenixcon.com)