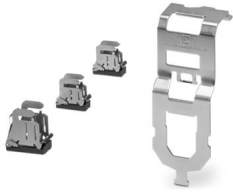


# EM-CSS-SHIELDING-SET-SCC-45 - Shield connection

1451208

<https://www.phoenixcontact.com/us/products/1451208>

Please be informed that the data shown in this PDF document is generated from our online catalog. Please find the complete data in the user documentation. Our general terms of use for downloads are valid.



Accessories set for simple and reliable connection of cable shields to the CONTACTRON Speed Starter, consisting of a 45 mm shroud, 2 shield connection terminal blocks for the signal lines, and one shield connection terminal block for the motor cable.

## Commercial data

Item number	1451208
Packing unit	1 pc
Minimum order quantity	1 pc
Sales key	C473
Product key	DK731Z
GTIN	4063151837389
Weight per piece (including packing)	109.4 g
Weight per piece (excluding packing)	109.4 g
Customs tariff number	85369010
Country of origin	DE

# EM-CSS-SHIELDING-SET-SCC-45 - Shield connection



1451208

<https://www.phoenixcontact.com/us/products/1451208>

## Technical data

### Product properties

Product type	Shroud
Product family	CONTACTRON

# EM-CSS-SHIELDING-SET-SCC-45 - Shield connection



1451208

<https://www.phoenixcontact.com/us/products/1451208>

## Classifications

### ECLASS

ECLASS-13.0	27371392
ECLASS-15.0	27371392

### ETIM

ETIM 10.0	EC002886
-----------	----------

# EM-CSS-SHIELDING-SET-SCC-45 - Shield connection



1451208

<https://www.phoenixcontact.com/us/products/1451208>

## Environmental product compliance

### EU RoHS

Fulfills EU RoHS substance requirements	Yes, No exemptions
---	--------------------

### EU REACH SVHC

REACH candidate substance (CAS No.)	No substance above 0.1 wt%
-------------------------------------	----------------------------

### EF3.1 Climate Change

CO2e kg	0.925 kg CO2e
---------	---------------

Phoenix Contact 2026 © - all rights reserved  
<https://www.phoenixcontact.com>

Phoenix Contact USA  
586 Fulling Mill Road  
Middletown, PA 17057, United States  
(+717) 944-1300  
[info@phoenixcon.com](mailto:info@phoenixcon.com)