

# HC-STA-A16PT-BWS-HT-M25-ELCAL - Connector set



1424461

<https://www.phoenixcontact.com/us/products/1424461>

Please be informed that the data shown in this PDF document is generated from our online catalog. Please find the complete data in the user documentation. Our general terms of use for downloads are valid.



Connector set, number of positions: 16, connection method: Push-in connection, connection cross section: AWG 26- 14

## Commercial data

Item number	1424461
Packing unit	1 pc
Minimum order quantity	1 pc
Sales key	BF63
Product key	AF7AFX
GTIN	4055626372907
Weight per piece (including packing)	442 g
Weight per piece (excluding packing)	387 g
Customs tariff number	85366990
Country of origin	CN

# HC-STA-A16PT-BWS-HT-M25-ELCAL - Connector set



1424461

<https://www.phoenixcontact.com/us/products/1424461>

## Set consists of

### HC-A16-I-PT-M - Contact insert

1585375

<https://www.phoenixcontact.com/us/products/1585375>



Contact insert, number of positions: 16+PE, size: D25, number of connections per position: 1, Pin, Push-in connection, 250 V, 16 A, 0.14 mm<sup>2</sup> ... 2.5 mm<sup>2</sup>

---

### HC-A16-I-PT-F - Contact insert

1585388

<https://www.phoenixcontact.com/us/products/1585388>



Contact insert, number of positions: 16+PE, size: D25, number of connections per position: 1, Socket, Push-in connection, 250 V, 16 A, 0.14 mm<sup>2</sup> ... 2.5 mm<sup>2</sup>

# HC-STA-A16PT-BWS-HT-M25-ELCAL - Connector set



1424461

<https://www.phoenixcontact.com/us/products/1424461>

## HC-STA-D25-BWS-EL-AL - Housing

1424391

<https://www.phoenixcontact.com/us/products/1424391>



Panel mounting base D25, with single locking latch, material: Die-cast aluminum, salt water resistant, height: 26 mm, cable gland: none, Standard

---

## HC-STA-D25-HHFS-1TTM25-ELC-AL - Housing

1424382

<https://www.phoenixcontact.com/us/products/1424382>



Sleeve housing D25, for single locking latch, material: Die-cast aluminum, salt water resistant, cable outlets: 1, straight, 1x M25, height: 72 mm, cable gland: none, Standard

# HC-STA-A16PT-BWS-HT-M25-ELCAL - Connector set



1424461

<https://www.phoenixcontact.com/us/products/1424461>

## G-INS-M25-M68N-NNES-S - Cable gland

1411165

<https://www.phoenixcontact.com/us/products/1411165>



Cable gland, material for screw connection: Brass, nickel-plated, application: Standard, external cable diameter 11 mm ... 17 mm, shielding: no, connecting thread: M25 x 1.5, color: silver-colored, with O-ring

1424461

<https://www.phoenixcontact.com/us/products/1424461>

## Technical data

### Product properties

Product type	Connector set
Housing type	Complete housing
Application	Standard
Type	D25
Number of positions	16
No. of cable outlets	1
Protective cover	no

### Insulation characteristics

Overvoltage category	III
Degree of pollution	3

### Electrical properties

Rated voltage (III/3)	250 V
Rated surge voltage	4 kV
Rated current	16 A

### Connection data

Connection method	Push-in connection
Connection technology	Push-in connection
Conductor cross-section	0.14 mm <sup>2</sup> ... 2.5 mm <sup>2</sup> (applies to stranded conductors with ferrules) 0.14 mm <sup>2</sup> ... 2.5 mm <sup>2</sup> (applies to stranded conductors with ferrules)
Connection cross section AWG	26 ... 14

### Dimensions

#### Installation dimensions

Width of the assembly cutout	24 mm
Length of the assembly cutout	74 mm

### Material specifications

Material Housing	Die-cast aluminum, saltwater-resistant
Flammability rating according to UL 94	V0
Contact material	Copper alloy
Contact surface material	Ag
Contact carrier material	PC
Locking latch material	PA

### Cable/line

External cable diameter	11 mm ... 17 mm
-------------------------	-----------------

# HC-STA-A16PT-BWS-HT-M25-ELCAL - Connector set



1424461

<https://www.phoenixcontact.com/us/products/1424461>

14 mm ... 17 mm (for UL 514 B)

## Environmental and real-life conditions

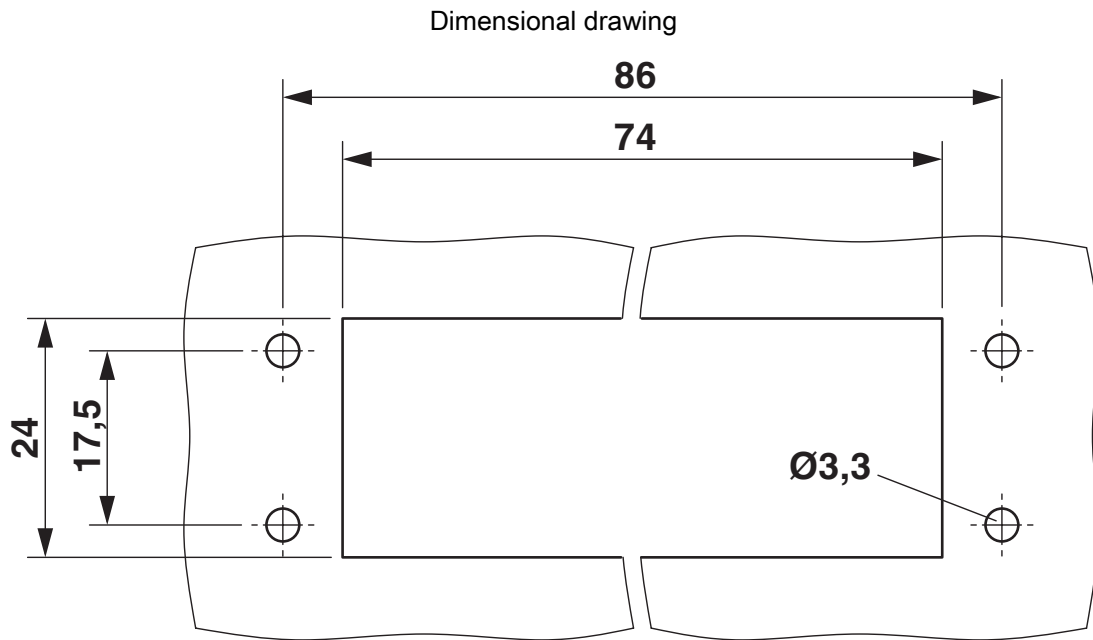
### Ambient conditions

Degree of protection	IP66
	IP67
Enclosure rating (NEMA)	4 (UL 50e)
	4X (UL 50e)
	12 (UL 50e)
Impact strength	IK08
Ambient temperature (operation)	-40 °C ... 100 °C

1424461

<https://www.phoenixcontact.com/us/products/1424461>

Drawings



Mounting cutout

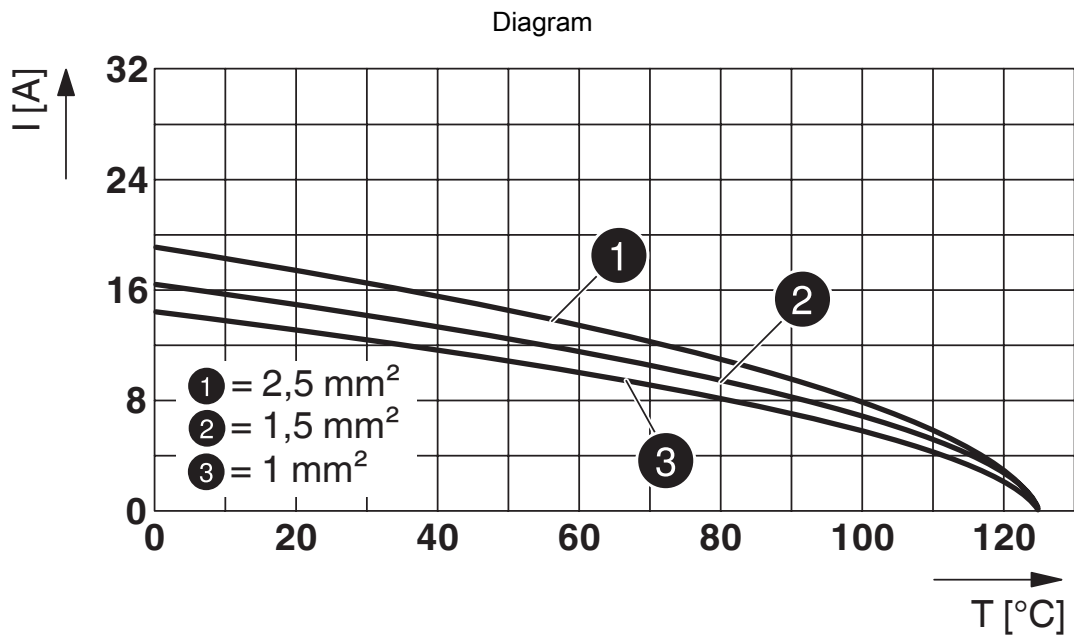
1424461

<https://www.phoenixcontact.com/us/products/1424461>

Schematic diagram



Pin assignment, connection side, pin left, socket right



Derating diagram

# HC-STA-A16PT-BWS-HT-M25-ELCAL - Connector set



1424461

<https://www.phoenixcontact.com/us/products/1424461>

## Approvals

🔗 To download certificates, visit the product detail page: <https://www.phoenixcontact.com/us/products/1424461>

**DNV**

Approval ID: TAE000037S

1424461

<https://www.phoenixcontact.com/us/products/1424461>

## Classifications

### ECLASS

ECLASS-13.0	27440113
ECLASS-15.0	27440113

### ETIM

ETIM 10.0	EC002636
-----------	----------

### UNSPSC

UNSPSC 21.0	39121400
-------------	----------

1424461

<https://www.phoenixcontact.com/us/products/1424461>

## Environmental product compliance

### EU RoHS

Fulfills EU RoHS substance requirements	Yes
Exemption	6(c)

### China RoHS

Environment friendly use period (EFUP)	EFUP-50
	An article-related China RoHS declaration table can be found in the download area for the respective article under "Manufacturer declaration". For all articles with EFUP-E, no China RoHS declaration table issued and required.

### EU REACH SVHC

REACH candidate substance (CAS No.)	Lead(CAS: 7439-92-1)
SCIP	b3027077-0fdf-4f2d-bc75-9591252de914

Phoenix Contact 2026 © - all rights reserved

<https://www.phoenixcontact.com>

Phoenix Contact USA  
 586 Fulling Mill Road  
 Middletown, PA 17057, United States  
 (+717) 944-1300  
[info@phoenixcon.com](mailto:info@phoenixcon.com)