

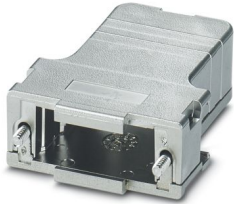
CUC-DST-GPME-A/DSSC15 - D-SUB sleeve housings



1419718

<https://www.phoenixcontact.com/us/products/1419718>

Please be informed that the data shown in this PDF document is generated from our online catalog. Please find the complete data in the user documentation. Our general terms of use for downloads are valid.



D-SUB sleeve housings, degree of protection: IP20, material: ABS, metal-plated, cable outlet: angled, housing size: 2, color: Bare metallic

Your advantages

- Easy to mount thanks to preassembled locking screws
- Angled conductor entry
- Antimagnetic plastic housing

Commercial data

| | |
|--------------------------------------|---------------|
| Item number | 1419718 |
| Packing unit | 1 pc |
| Minimum order quantity | 1 pc |
| Sales key | AB19 |
| Product key | ABNCAE |
| GTIN | 4055626187884 |
| Weight per piece (including packing) | 18.2 g |
| Weight per piece (excluding packing) | 15.73 g |
| Customs tariff number | 85389099 |
| Country of origin | DE |

1419718

<https://www.phoenixcontact.com/us/products/1419718>

Technical data

Product properties

| | |
|----------------------|-----------------|
| Product type | Sleeve housings |
| Type | D-SUB |
| No. of cable outlets | 1 |
| Cable outlet | angled |

Connection data

| | |
|--------------|----------|
| Screw thread | 4-40 UNC |
|--------------|----------|

Dimensions

| | |
|--------|---------|
| Width | 41.2 mm |
| Height | 16.2 mm |
| Depth | 49.4 mm |

Material specifications

| | |
|--|-------------------|
| Color | Bare metallic |
| Flammability rating according to UL 94 | V0 |
| Housing material | ABS, metal-plated |
| Housing surface material | metal-plated |

Cable/line

| | |
|-------------------------|-------------------|
| External cable diameter | 3.5 mm ... 8.6 mm |
|-------------------------|-------------------|

Environmental and real-life conditions

Ambient conditions

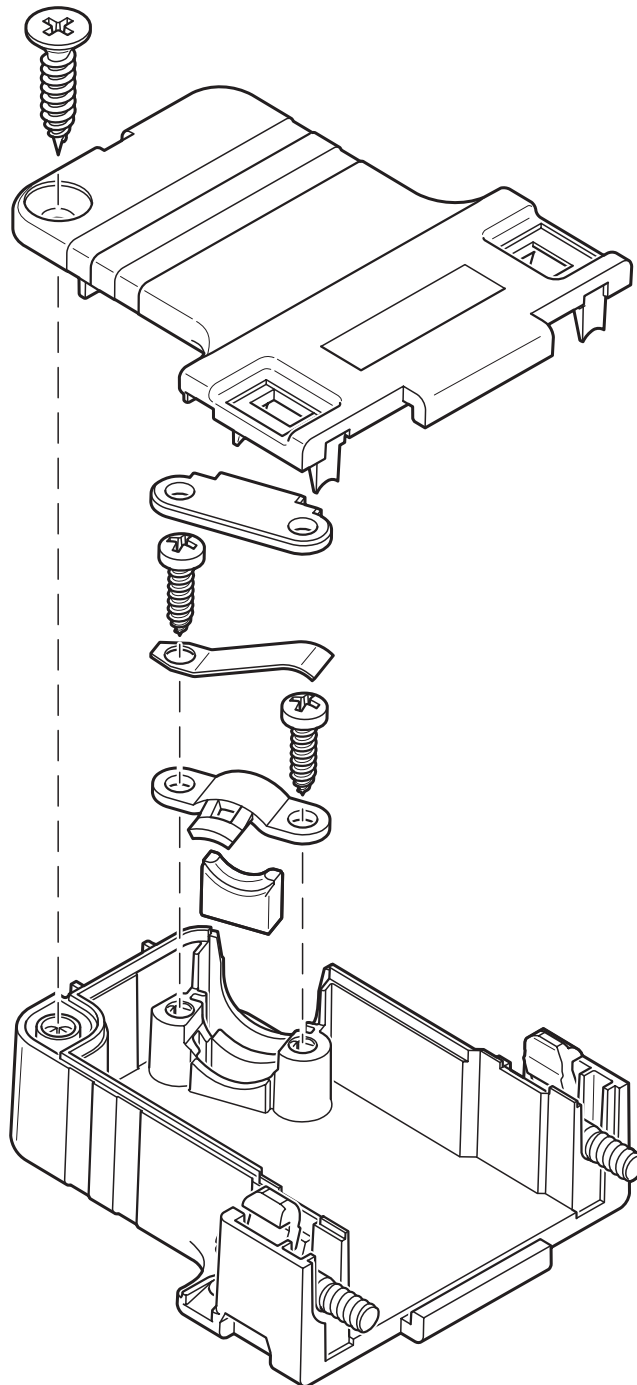
| | |
|---------------------------------|------------------|
| Degree of protection | IP20 |
| Ambient temperature (operation) | -35 °C ... 95 °C |

Mounting

| | |
|---------------|-------------------------|
| Mounting type | Screw locking mechanism |
|---------------|-------------------------|

Drawings

Schematic diagram



1419718

<https://www.phoenixcontact.com/us/products/1419718>

Classifications

ECLASS

| | |
|-------------|----------|
| ECLASS-13.0 | 27440202 |
| ECLASS-15.0 | 27440202 |

ETIM

| | |
|-----------|----------|
| ETIM 10.0 | EC000437 |
|-----------|----------|

UNSPSC

| | |
|-------------|----------|
| UNSPSC 21.0 | 31261500 |
|-------------|----------|

1419718

<https://www.phoenixcontact.com/us/products/1419718>

Environmental product compliance

EU RoHS

| | |
|---|--------------------|
| Fulfills EU RoHS substance requirements | Yes, No exemptions |
|---|--------------------|

China RoHS

| | |
|--|--|
| Environment friendly use period (EFUP) | EFUP-E |
| | No hazardous substances above the limits |

EU REACH SVHC

| | |
|-------------------------------------|----------------------------|
| REACH candidate substance (CAS No.) | No substance above 0.1 wt% |
|-------------------------------------|----------------------------|

Phoenix Contact 2026 © - all rights reserved
<https://www.phoenixcontact.com>

Phoenix Contact USA
586 Fulling Mill Road
Middletown, PA 17057, United States
(+717) 944-1300
info@phoenixcon.com