

QPD W 3X1,5 M20 0,35 BK B-S - Panel feed-through



1419429

<https://www.phoenixcontact.com/us/products/1419429>

Please be informed that the data shown in this PDF document is generated from our online catalog. Please find the complete data in the user documentation. Our general terms of use for downloads are valid.



Panel feed-through, connection method: Single wires (Welded-on), M20, 0.5 mm² ... 1.5 mm², 690 V, 17.5 A, PA, black, without QUICKON nut, coding: Coding profile, 1.5 mm², wires cut flat at the end, cable length: 0.35 m, pin assignment: 1 = RD, 2 = BK, 3 = VT

Commercial data

| | |
|--------------------------------------|---------------|
| Item number | 1419429 |
| Packing unit | 1 pc |
| Minimum order quantity | 1 pc |
| Sales key | BF50 |
| Product key | AF6AAA |
| GTIN | 4055626173061 |
| Weight per piece (including packing) | 44 g |
| Weight per piece (excluding packing) | 36.7 g |
| Customs tariff number | 85444290 |
| Country of origin | PL |

QPD W 3X1,5 M20 0,35 BK B-S - Panel feed-through



1419429

<https://www.phoenixcontact.com/us/products/1419429>

Technical data

Product properties

| | |
|------------------------------------|--------------------|
| Product type | Panel feed-through |
| Product family | QPD |
| Type | QPD 3x1,5 |
| Number of positions | 3 |
| Position marking | 1, 2, 3 |
| Number of connections | 10 |
| Number of connections per position | 1 |
| Coding | Coding profile |

Insulation characteristics

| | |
|----------------------|-----|
| Overvoltage category | III |
| Degree of pollution | 3 |

Connection data

Connection technology

| | |
|---|--------------------------|
| Connection method On the device side | Single wires (Welded-on) |
| Frequency of connections between conductors of the same cross section | max. 10 |

Conductor connection

| | |
|----------------------------------|---|
| Conductor cross-section flexibel | 0.5 mm ² ... 1.5 mm ² |
| Conductor cross-section solid | 0.5 mm ² ... 1.5 mm ² |
| Connection cross section AWG | 20 ... 16 |
| Tightening torque Union nut | 8 Nm |
| Tightening torque Locking nut | 5 Nm |

Dimensions

| | |
|---------------------|---------|
| Dimensional drawing | |
| Width | 25 mm |
| Height | 25 mm |
| Length | 45.5 mm |
| Diameter | 25 mm |

Electrical properties

| | |
|-----------------------------|--------|
| Rated surge voltage (II/2) | 8 kV |
| Rated surge voltage (III/2) | 8 kV |
| Rated surge voltage (III/3) | 6 kV |
| Rated current | 17.5 A |

QPD W 3X1,5 M20 0,35 BK B-S - Panel feed-through



1419429

<https://www.phoenixcontact.com/us/products/1419429>

| | |
|-----------------------|--------|
| Contact resistance | < 3 mΩ |
| rated voltage (II/2) | 1000 V |
| rated voltage (III/2) | 1000 V |
| Rated voltage (III/3) | 690 V |
| Nominal voltage U_N | 690 V |
| Nominal current I_N | 17.5 A |

Mechanical properties

Mechanical data

| | |
|-----------------------------|---------|
| Insertion/withdrawal cycles | max. 50 |
|-----------------------------|---------|

Material specifications

| | |
|--|-------------------|
| Color | black (RAL 9005) |
| Material Housing | PA |
| Material Contact | Cu |
| Material Contact surface | silver-plated |
| Flammability rating according to UL 94 | V0 |
| Material wire insulation | PVC/PE/TPE/rubber |

Cable/line

| | |
|---|------------------------------------|
| Cable length | 0.35 m |
| Structure of individual litz in acc. with VDE 0295 / smallest wire diameter | VDE 0295 class 1 to 6/min. 0.15 mm |
| Wire diameter including insulation | 1.6 mm ... 3 mm |
| Position marking | 1, 2, 3 |
| Cable cross section | 1.5 mm ² |
| Material wire insulation | PVC / PE |

Mounting

| | |
|---------------|--------------------|
| Mounting type | Front mounting M20 |
|---------------|--------------------|

Environmental and real-life conditions

Ambient conditions

| | |
|---|--|
| Degree of protection | IP66 |
| | IP68 (2 m / 24 h) |
| | IP69K |
| | Touch-proof when not plugged in (IP2X) |
| Impact strength | IK07 |
| Ambient temperature (operation) | -40 °C ... 100 °C |
| Temperature when conductor connected | -5 °C ... 50 °C |
| Ambient temperature (storage/transport) | -40 °C ... 80 °C |

QPD W 3X1,5 M20 0,35 BK B-S - Panel feed-through

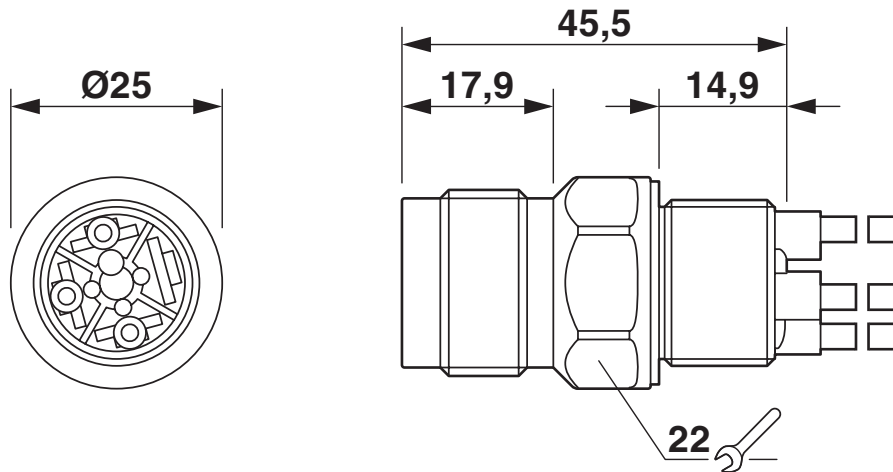


1419429

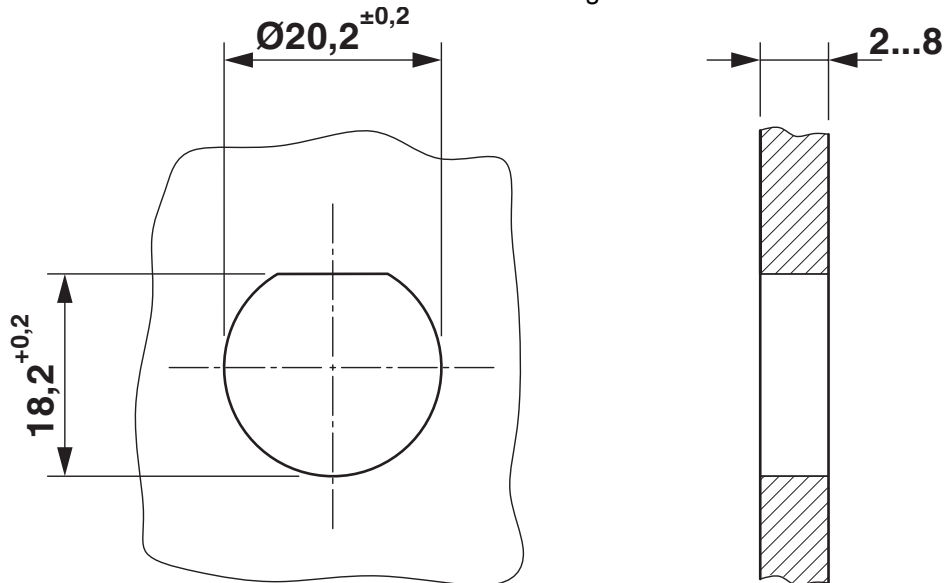
<https://www.phoenixcontact.com/us/products/1419429>

Drawings

Dimensional drawing



Dimensional drawing



Housing cutout

QPD W 3X1,5 M20 0,35 BK B-S - Panel feed-through





1419429


<https://www.phoenixcontact.com/us/products/1419429>

Approvals

To download certificates, visit the product detail page: <https://www.phoenixcontact.com/us/products/1419429>

|  UL Listed Approval ID: E468743 | | | | |
|--|-----------------------|-----------------------|-------------------|-----------------------------|
| | Nominal voltage U_N | Nominal current I_N | Cross section AWG | Cross section mm^2 |
| keine | | | | |
| | 600 V | 8 A | - 16 | - |

|  cUL Listed Approval ID: E468743 | | | | |
|---|-----------------------|-----------------------|-------------------|-----------------------------|
| | Nominal voltage U_N | Nominal current I_N | Cross section AWG | Cross section mm^2 |
| keine | | | | |
| | 600 V | 8 A | - 16 | - |

|  DNV GL Approval ID: TAE00003J5 | | | | |
|--|--|--|--|--|
|--|--|--|--|--|

QPD W 3X1,5 M20 0,35 BK B-S - Panel feed-through



1419429

<https://www.phoenixcontact.com/us/products/1419429>

Classifications

ECLASS

| | |
|-------------|----------|
| ECLASS-13.0 | 27440602 |
| ECLASS-15.0 | 27440602 |

ETIM

| | |
|-----------|----------|
| ETIM 10.0 | EC002566 |
|-----------|----------|

UNSPSC

| | |
|-------------|----------|
| UNSPSC 21.0 | 39121500 |
|-------------|----------|

QPD W 3X1,5 M20 0,35 BK B-S - Panel feed-through



1419429

<https://www.phoenixcontact.com/us/products/1419429>

Environmental product compliance

EU RoHS

| | |
|---|--------------------|
| Fulfills EU RoHS substance requirements | Yes, No exemptions |
|---|--------------------|

China RoHS

| | |
|--|--|
| Environment friendly use period (EFUP) | EFUP-E |
| | No hazardous substances above the limits |

EU REACH SVHC

| | |
|-------------------------------------|----------------------------|
| REACH candidate substance (CAS No.) | No substance above 0.1 wt% |
|-------------------------------------|----------------------------|

Phoenix Contact 2026 © - all rights reserved
<https://www.phoenixcontact.com>

Phoenix Contact USA
586 Fulling Mill Road
Middletown, PA 17057, United States
(+717) 944-1300
info@phoenixcon.com