

HC-COM-K-AML-GW - Housing

1408368

<https://www.phoenixcontact.com/us/products/1408368>

Please be informed that the data shown in this PDF document is generated from our online catalog. Please find the complete data in the user documentation. Our general terms of use for downloads are valid.

Panel mounting base with single locking engagement nose, angled design



Commercial data

| | |
|--------------------------------------|--------------------------------|
| Item number | 1408368 |
| Packing unit | 1 pc |
| Note | Made to order (non-returnable) |
| Sales key | BF59 |
| Product key | AF7AAH |
| GTIN | 4046356618106 |
| Weight per piece (including packing) | 40.2 g |
| Weight per piece (excluding packing) | 40.2 g |
| Customs tariff number | 85389099 |
| Country of origin | CN |

HC-COM-K-AML-GW - Housing

1408368

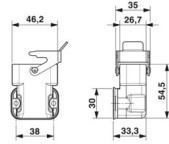
<https://www.phoenixcontact.com/us/products/1408368>

Technical data

Product properties

| | |
|---------------------|----------------------------|
| Product type | Housing with locking latch |
| Housing type | Panel mounting base |
| Product family | HC-COM |
| Application | Standard |
| Type | COM |
| Pg screw connection | none |

Dimensions

| | |
|---------------------|---|
| Dimensional drawing |  |
| Width | 46 mm |
| Height | 33.5 mm |
| Length | 54.5 mm |

Installation dimensions

| | |
|-------------------------------|-------|
| Width of the assembly cutout | 24 mm |
| Length of the assembly cutout | 26 mm |

Material specifications

| | |
|--|-----------------|
| Flammability rating according to UL 94 | V0 |
| Seal material | NBR |
| Housing material | PC |
| Locking latch material | Stainless steel |

Mechanical properties

Mechanical data

| | |
|--------------|-------|
| Locking type | Latch |
|--------------|-------|

Environmental and real-life conditions

Ambient conditions

| | |
|---------------------------------|-------------------|
| Degree of protection | IP65 |
| | IP66 |
| Ambient temperature (operation) | -40 °C ... 125 °C |

HC-COM-K-AML-GW - Housing

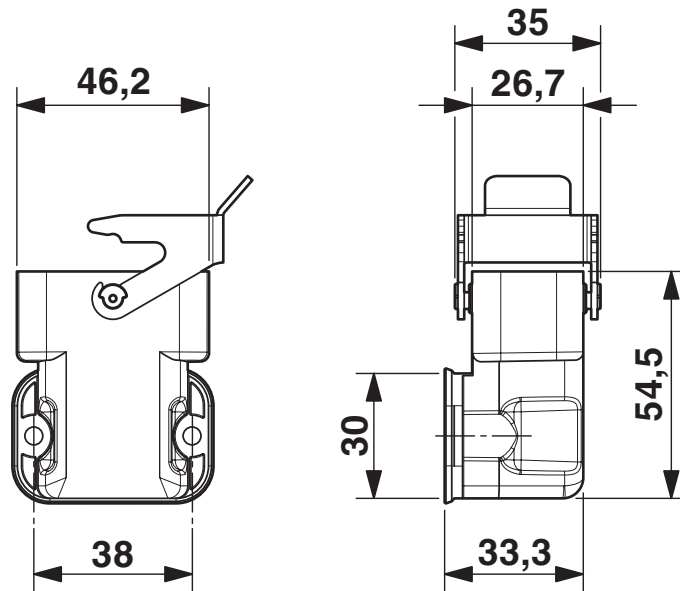
1408368

<https://www.phoenixcontact.com/us/products/1408368>



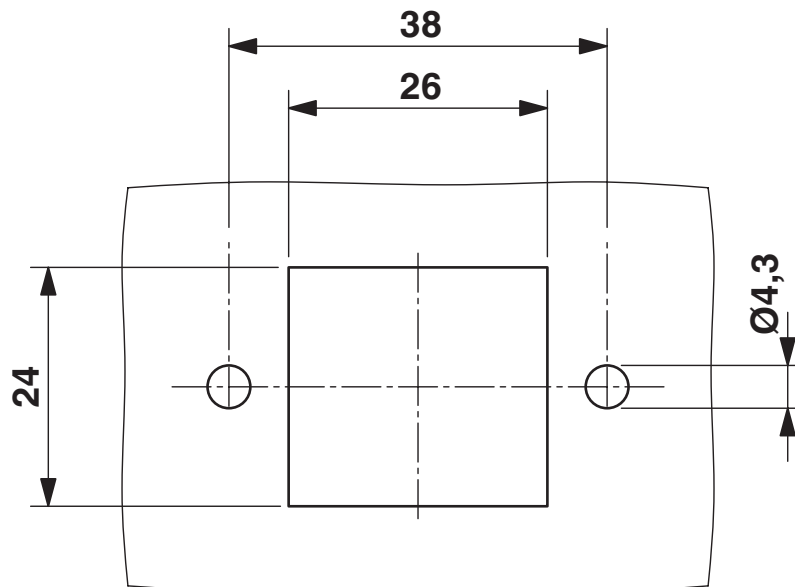
Drawings

Dimensional drawing



Dimensional drawing

Dimensional drawing



Mounting cutout

HC-COM-K-AML-GW - Housing

1408368

<https://www.phoenixcontact.com/us/products/1408368>



Classifications

ECLASS

| | |
|-------------|----------|
| ECLASS-13.0 | 27440202 |
| ECLASS-15.0 | 27440202 |

UNSPSC

| | |
|-------------|----------|
| UNSPSC 21.0 | 31261500 |
|-------------|----------|

HC-COM-K-AML-GW - Housing



1408368

<https://www.phoenixcontact.com/us/products/1408368>

Environmental product compliance

EU RoHS

| | |
|---|--------------------|
| Fulfills EU RoHS substance requirements | Yes, No exemptions |
|---|--------------------|

China RoHS

| | |
|--|--|
| Environment friendly use period (EFUP) | EFUP-E |
| | No hazardous substances above the limits |

EU REACH SVHC

| | |
|-------------------------------------|----------------------------|
| REACH candidate substance (CAS No.) | No substance above 0.1 wt% |
|-------------------------------------|----------------------------|

Phoenix Contact 2026 © - all rights reserved
<https://www.phoenixcontact.com>

Phoenix Contact USA
586 Fulling Mill Road
Middletown, PA 17057, United States
(+717) 944-1300
info@phoenixcon.com