

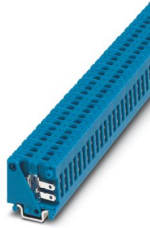
MBK-FS/FS BU - Feed-through terminal block



1406098

<https://www.phoenixcontact.com/us/products/1406098>

Please be informed that the data shown in this PDF document is generated from our online catalog. Please find the complete data in the user documentation. Our general terms of use for downloads are valid.



Feed-through terminal block, nom. voltage: 400 V, nominal current: 16 A, 1 level, connection method: Spade connection, cross section: 0.5 mm² - 1 mm², mounting: NS 15, color: blue

Commercial data

Item number	1406098
Packing unit	1 pc
Note	Made to order (non-returnable)
Sales key	BE05
Product key	BE511X
GTIN	4017918021030
Weight per piece (including packing)	2.4 g
Weight per piece (excluding packing)	2.181 g
Customs tariff number	85369010
Country of origin	DE

MBK-FS/FS BU - Feed-through terminal block



1406098

<https://www.phoenixcontact.com/us/products/1406098>

Technical data

Product properties

Product type	Miniature terminal block
Number of connections	8
Number of rows	1
Potentials	1

Insulation characteristics

Overvoltage category	III
Degree of pollution	3

Electrical properties

Rated surge voltage	6 kV
---------------------	------

Connection data

Number of connections per level	2
---------------------------------	---

1 level

Connection method	Spade connection
Spade connection	6.3/2.8 x 0.8 mm
Connection in acc. with standard	IEC 60947-7-1
Conductor cross-section rigid	0.5 mm ² ... 1 mm ²
Cross section AWG	20 ... 18 (converted acc. to IEC)
Conductor cross-section flexible	0.5 mm ² ... 1 mm ²
Conductor cross-section, flexible [AWG]	20 ... 18 (converted acc. to IEC)
Nominal current	16 A (current data for slip-on connections in acc. with DIN 61210 are also dependent on nominal size, material, insulation of the sleeve and conductor cross-section.)
Maximum load current	16 A (current data for slip-on connections in acc. with DIN 61210 are also dependent on nominal size, material, insulation of the sleeve and conductor cross-section.)
Nominal voltage	400 V (voltage data for slip-on connections in acc. with DIN 61210 are also dependent on nominal size, material, insulation of the sleeve and conductor cross-section.)

Dimensions

Width	5.2 mm
-------	--------

Material specifications

Color	blue
Flammability rating according to UL 94	V2
Insulating material group	I
Insulating material	PA

Mechanical properties

MBK-FS/FS BU - Feed-through terminal block



1406098

<https://www.phoenixcontact.com/us/products/1406098>

Mechanical data

Open side panel

No

Standards and regulations

Connection in acc. with standard

IEC 60947-7-1

Mounting

Mounting type

NS 15

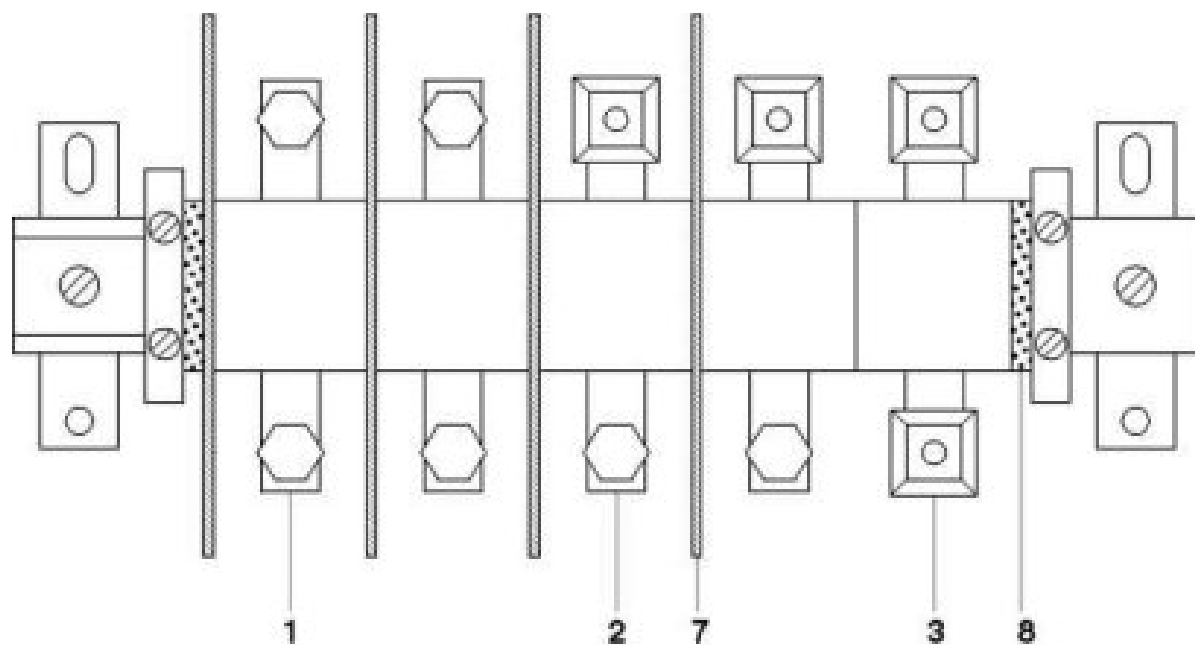
MBK-FS/FS BU - Feed-through terminal block

1406098

<https://www.phoenixcontact.com/us/products/1406098>

Drawings

Circuit diagram



1 = high current connector, AS screw set on both sides

2 = high current connector, terminal sleeve KH on one side, screw set AS on the other side

3 = high current connector

7 = separating plate

8 = end piece

MBK-FS/FS BU - Feed-through terminal block



1406098

<https://www.phoenixcontact.com/us/products/1406098>

Environmental product compliance

EU RoHS

Fulfills EU RoHS substance requirements	Yes, No exemptions
---	--------------------

China RoHS

Environment friendly use period (EFUP)	EFUP-E
	No hazardous substances above the limits

EU REACH SVHC

REACH candidate substance (CAS No.)	No substance above 0.1 wt%
-------------------------------------	----------------------------

Phoenix Contact 2026 © - all rights reserved
<https://www.phoenixcontact.com>

Phoenix Contact USA
586 Fulling Mill Road
Middletown, PA 17057, United States
(+717) 944-1300
info@phoenixcon.com