

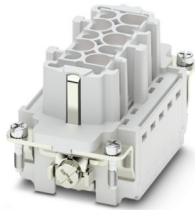
HC-HV03-I-CT-F - Contact insert



1405261

<https://www.phoenixcontact.com/us/products/1405261>

Please be informed that the data shown in this PDF document is generated from our online catalog. Please find the complete data in the user documentation. Our general terms of use for downloads are valid.



Contact insert, number of positions: 3+2+PE, size: B10, power contacts: 3, control contacts: 2, number of connections per position: 1, Socket, Crimp connection, 690 V, 16 A, 0.5 mm² ... 4 mm²

Your advantages

- Shock and vibration-resistant in accordance with DIN EN 61373

Commercial data

| | |
|--------------------------------------|---------------|
| Item number | 1405261 |
| Packing unit | 1 pc |
| Minimum order quantity | 1 pc |
| Sales key | BF61 |
| Product key | AF7ABG |
| GTIN | 4055626063492 |
| Weight per piece (including packing) | 48.2 g |
| Weight per piece (excluding packing) | 40.2 g |
| Customs tariff number | 85366990 |
| Country of origin | CN |

HC-HV03-I-CT-F - Contact insert



1405261

<https://www.phoenixcontact.com/us/products/1405261>

Technical data

Notes

| | |
|---------|---|
| General | For HC ADVANCE-B10, HC-HV 3 housings, crimp contacts CK 2,5-ED (crimp contacts not included in scope of supply) |
| General | Connectors may be operated only when there is no load/voltage. |

Mounting

| | |
|---------------|---|
| Assembly note | To ensure correct use, installation in housing with IP54 protection or better is required |
|---------------|---|

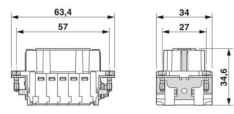
Product properties

| | |
|------------------------------------|--|
| Product type | Contact insert with a fixed no. of positions |
| Series | HC-HV |
| Type | B10 |
| Number of positions | 5 |
| Connection profile | 3+2+PE |
| Number of connections per position | 1 |
| No. of power contacts | 3 |
| No. of control contacts | 2 |
| Contact material type | turned |

Insulation characteristics

| | |
|----------------------|-----|
| Overvoltage category | III |
| Degree of pollution | 3 |

Dimensions

| | |
|---------------------------------|--|
| Dimensional drawing |  |
| Width | 34 mm |
| Height | 34.6 mm |
| Length | 64 mm |
| Drill hole distance, horizontal | 57 mm |
| Drill hole distance, vertical | 27 mm |

Mechanical characteristics

| | |
|------------------|--------|
| Contact diameter | 2.5 mm |
|------------------|--------|

Connection data

Connection technology

| | |
|-----------------------|------------------|
| Connection technology | Crimp connection |
| | Crimp connection |

HC-HV03-I-CT-F - Contact insert



1405261

<https://www.phoenixcontact.com/us/products/1405261>

| | |
|------------------------------------|---|
| Number of connections per position | 1 |
|------------------------------------|---|

Conductor connection

| | |
|---|--|
| Conductor cross-section | 0.5 mm ² ... 4 mm ² (power contacts) |
| | 0.5 mm ² ... 4 mm ² (control contacts) |
| Connection cross section AWG | 20 ... 12 (power contacts) |
| | 20 ... 12 (control contacts) |
| Tightening torque | 0.8 Nm ... 1.2 Nm (PE connection) |
| | 0.5 Nm ... 0.8 Nm (Mounting screws for mounting in the HEAVYCON housing) |
| Stripping length of the individual wire | 7.5 mm (Power) |
| | 7.5 mm (Signal) |

Electrical properties

| | |
|--------------------------------|-------------------------|
| Rated voltage (III/2) contacts | 830 V |
| Rated voltage (III/3) | 690 V |
| | 690 V |
| Rated surge voltage (III/2) | 8 kV |
| Rated surge voltage (III/3) | 6 kV |
| Rated surge voltage | 8 kV (power contacts) |
| | 6 kV (control contacts) |
| Rated current | 16 A (power contacts) |
| | 16 A (control contacts) |

Mechanical properties

Mechanical data

| | |
|-----------------------------|-------|
| Insertion/withdrawal cycles | ≥ 500 |
|-----------------------------|-------|

Material specifications

| | |
|--|-----------------------|
| Flammability rating according to UL 94 | V0 |
| Contact material | Copper alloy |
| Contact surface material | Ag (alternatively Au) |
| Contact carrier material | PC |
| Standards/regulations | PC |

Environmental and real-life conditions

Ambient conditions

| | |
|---------------------------------|--|
| Ambient temperature (operation) | -40 °C ... 125 °C (including heating up of contacts) |
|---------------------------------|--|

Standards and regulations

Testing

| | |
|-----------------------|---|
| Standards/regulations | PC: Fire protection in rail vehicles - requirement sets R22, R23, and R24 acc. to DIN EN 45545-2 (Risk level HL1 - HL3) |
|-----------------------|---|

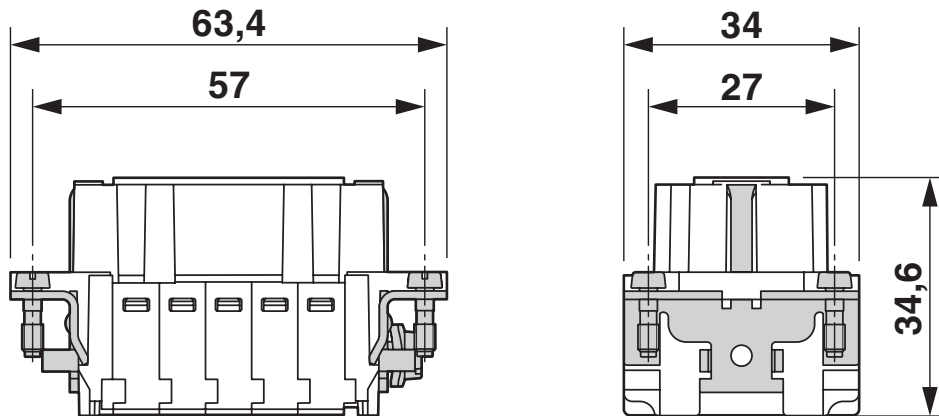
HC-HV03-I-CT-F - Contact insert

1405261

<https://www.phoenixcontact.com/us/products/1405261>

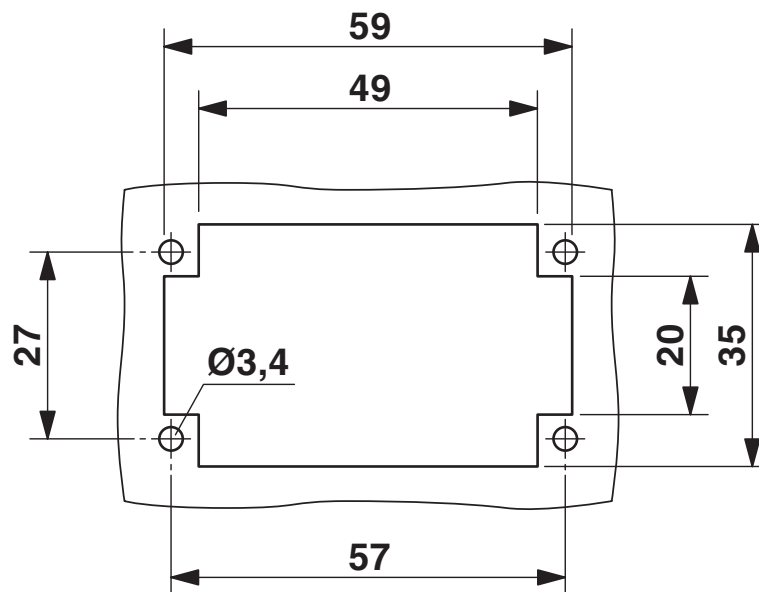
Drawings

Dimensional drawing



Dimensional drawing

Dimensional drawing



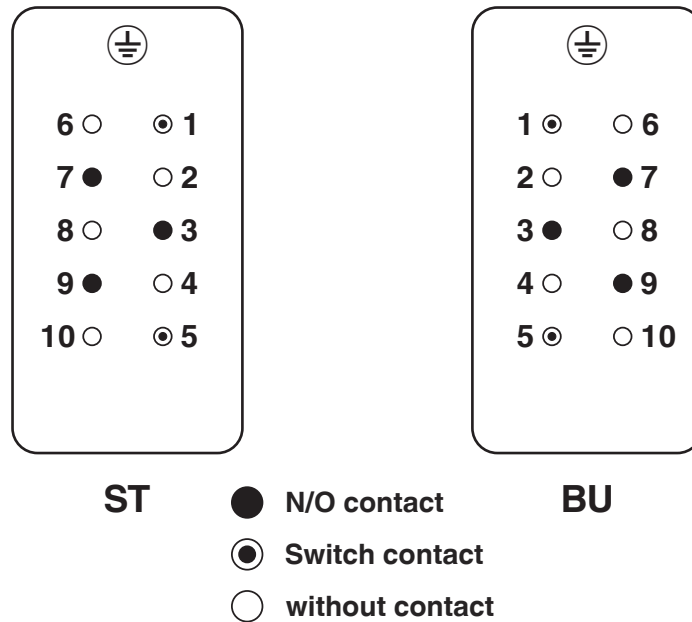
Mounting cutout when used without housing

HC-HV03-I-CT-F - Contact insert

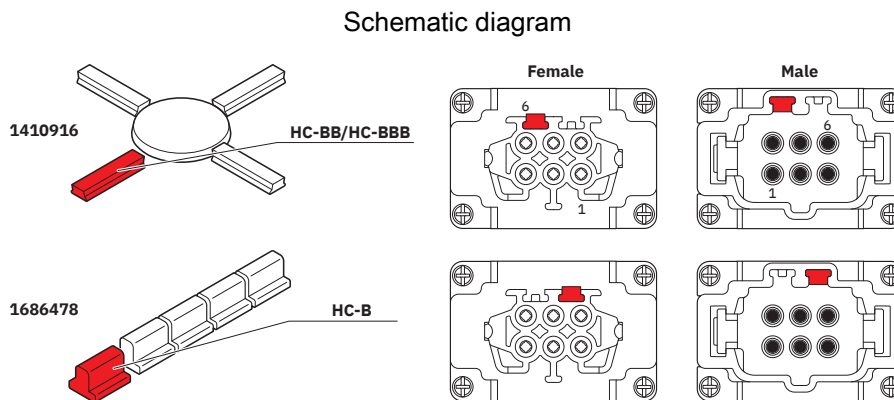
1405261

<https://www.phoenixcontact.com/us/products/1405261>

Schematic diagram



View termination side



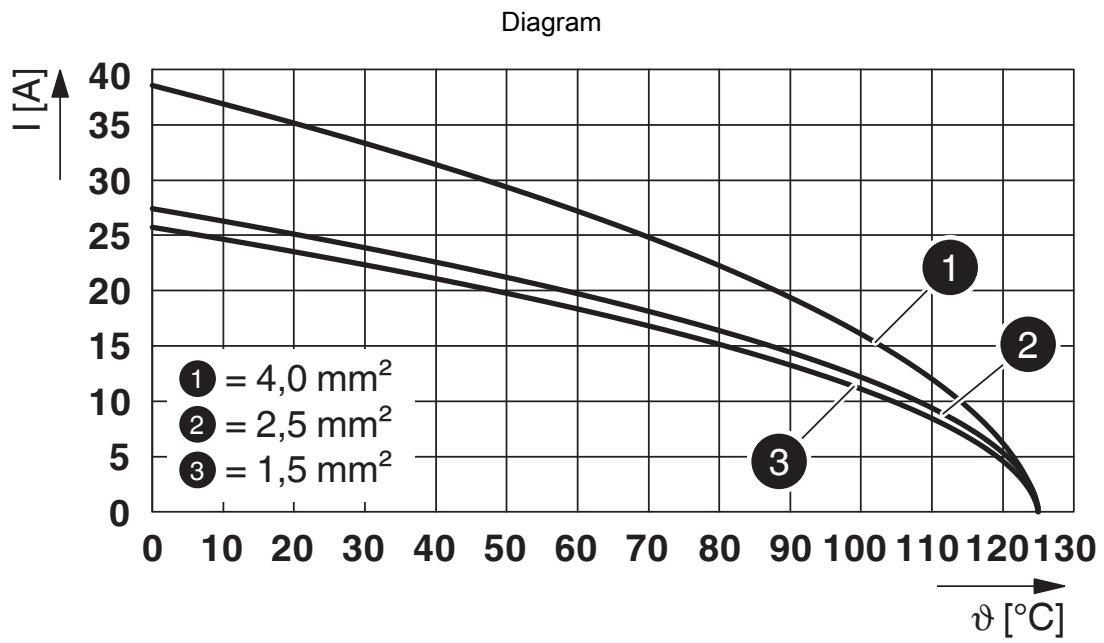
Coding options

HC-HV03-I-CT-F - Contact insert



1405261

<https://www.phoenixcontact.com/us/products/1405261>



Derating diagram

HC-HV03-I-CT-F - Contact insert



1405261

<https://www.phoenixcontact.com/us/products/1405261>

Approvals

To download certificates, visit the product detail page: <https://www.phoenixcontact.com/us/products/1405261>

DNV

Approval ID: TAE000037S



CSA

Approval ID: 013631_6233_01

| | Nominal voltage U_N | Nominal current I_N | Cross section AWG | Cross section mm^2 |
|-------|-----------------------|-----------------------|-------------------|-----------------------------|
| keine | | | | |
| | 600 V | 20 A | 20 - 12 | - |



cULus Recognized

Approval ID: E468743

| | Nominal voltage U_N | Nominal current I_N | Cross section AWG | Cross section mm^2 |
|-------|-----------------------|-----------------------|-------------------|-----------------------------|
| keine | | | | |
| | 600 V | 16 A | - 12 | - |

HC-HV03-I-CT-F - Contact insert



1405261

<https://www.phoenixcontact.com/us/products/1405261>

Classifications

ECLASS

| | |
|-------------|----------|
| ECLASS-13.0 | 27440205 |
| ECLASS-15.0 | 27440205 |

ETIM

| | |
|-----------|----------|
| ETIM 10.0 | EC000438 |
|-----------|----------|

UNSPSC

| | |
|-------------|----------|
| UNSPSC 21.0 | 39121500 |
|-------------|----------|

HC-HV03-I-CT-F - Contact insert



1405261

<https://www.phoenixcontact.com/us/products/1405261>

Environmental product compliance

EU RoHS

| | |
|---|--------------------|
| Fulfills EU RoHS substance requirements | Yes, No exemptions |
|---|--------------------|

China RoHS

| | |
|--|--|
| Environment friendly use period (EFUP) | EFUP-E |
| | No hazardous substances above the limits |

EU REACH SVHC

| | |
|-------------------------------------|----------------------------|
| REACH candidate substance (CAS No.) | No substance above 0.1 wt% |
|-------------------------------------|----------------------------|

Phoenix Contact 2026 © - all rights reserved
<https://www.phoenixcontact.com>

Phoenix Contact USA
586 Fulling Mill Road
Middletown, PA 17057, United States
(+717) 944-1300
info@phoenixcon.com