

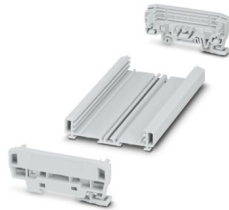
UM-BASIC-KIT-B72-L150-7035 - Housing set



1300348

<https://www.phoenixcontact.com/us/products/1300348>

Please be informed that the data shown in this PDF document is generated from our online catalog. Please find the complete data in the user documentation. Our general terms of use for downloads are valid.



Profile housing (PVC), mounting type: DIN rail mounting, dimensions on the DIN rail: width: 153.8 mm, height: 92.3 mm, depth: 39.45 mm, incl. 2 lateral elements (PA), color: light gray (7035), for PCBs with width: 72 mm, length: 150 mm, PCB surface: 9030 mm²

Commercial data

Item number	1300348
Packing unit	1 pc
Minimum order quantity	1 pc
Sales key	AC13
Product key	ACHDAK
GTIN	4063151543792
Weight per piece (including packing)	128.08 g
Weight per piece (excluding packing)	93.64 g
Customs tariff number	39169010
Country of origin	DE

UM-BASIC-KIT-B72-L150-7035 - Housing set



1300348

<https://www.phoenixcontact.com/us/products/1300348>

Technical data

Notes

Assembly note	Please observe the assembly instructions available in the download area.
---------------	--

Product properties

Product type	Stackable housing set
Housing type	Profile housing
Housing series	UM-BASIC

Dimensions

Width	153.8 mm
Height	92.3 mm
Depth	39.45 mm
Depth from top edge of DIN rail	32.45 mm
Dimensions	72 mm x 150 mm (PCB dimensions)

PCB design

PCB thickness	1.4 mm ... 1.8 mm
---------------	-------------------

Material specifications

Color (Housing)	light gray (RAL 7035)
Color	light gray (RAL 7035)
Material	PVC
Flammability rating according to UL 94	V0
Insulating material	PVC

Environmental and real-life conditions

Ambient conditions

Ambient temperature (operation)	-15 °C ... 50 °C (depending on power dissipation)
Ambient temperature (storage/transport)	-40 °C ... 50 °C
Ambient temperature (assembly)	-5 °C ... 50 °C
Relative humidity (storage/transport)	95 %

PCB data

Number of PCB holders	3
Type of PCB mount	Insertion/securing with additional elements
Total PCB surface	9030 mm ²
Thickness of the PCB	1.4 mm ... 1.8 mm

Mounting

Mounting type	DIN rail mounting
Mounting position	parallel to the DIN rail

UM-BASIC-KIT-B72-L150-7035 - Housing set



1300348

<https://www.phoenixcontact.com/us/products/1300348>

Packaging specifications

Type of packaging	packed in cardboard
Outer packaging type	Carton

UM-BASIC-KIT-B72-L150-7035 - Housing set



1300348

<https://www.phoenixcontact.com/us/products/1300348>

Approvals

To download certificates, visit the product detail page: <https://www.phoenixcontact.com/us/products/1300348>



UL Recognized

Approval ID: E240868

UM-BASIC-KIT-B72-L150-7035 - Housing set



1300348

<https://www.phoenixcontact.com/us/products/1300348>

Classifications

ECLASS

ECLASS-13.0	27190301
ECLASS-15.0	27190301

ETIM

ETIM 10.0	EC001031
-----------	----------

UNSPSC

UNSPSC 21.0	31261500
-------------	----------

UM-BASIC-KIT-B72-L150-7035 - Housing set



1300348

<https://www.phoenixcontact.com/us/products/1300348>

Environmental product compliance

EU RoHS

Fulfills EU RoHS substance requirements	Yes, No exemptions
---	--------------------

China RoHS

Environment friendly use period (EFUP)	EFUP-E
	No hazardous substances above the limits

EU REACH SVHC

REACH candidate substance (CAS No.)	No substance above 0.1 wt%
-------------------------------------	----------------------------

Phoenix Contact 2026 © - all rights reserved
<https://www.phoenixcontact.com>

Phoenix Contact USA
586 Fulling Mill Road
Middletown, PA 17057, United States
(+717) 944-1300
info@phoenixcon.com