

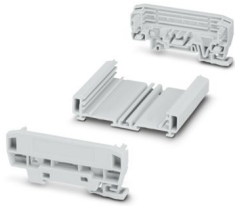
# UM-BASIC-KIT-B72-L80-7035 - Housing set



1300345

<https://www.phoenixcontact.com/us/products/1300345>

Please be informed that the data shown in this PDF document is generated from our online catalog. Please find the complete data in the user documentation. Our general terms of use for downloads are valid.



Profile housing (PVC), mounting type: DIN rail mounting, dimensions on the DIN rail: width: 83.8 mm, height: 92.3 mm, depth: 39.45 mm, incl. 2 lateral elements (PA), color: light gray (7035), for PCBs with width: 72 mm, length: 80 mm, PCB surface: 4300 mm<sup>2</sup>

## Commercial data

Item number	1300345
Packing unit	1 pc
Minimum order quantity	1 pc
Note	Made to order (non-returnable)
Sales key	AC13
Product key	ACHDAK
GTIN	4063151545215
Weight per piece (including packing)	79.3 g
Weight per piece (excluding packing)	58.54 g
Customs tariff number	39169010
Country of origin	DE

# UM-BASIC-KIT-B72-L80-7035 - Housing set



1300345

<https://www.phoenixcontact.com/us/products/1300345>

## Technical data

### Notes

Assembly note	Please observe the assembly instructions available in the download area.
---------------	--

### Product properties

Product type	Stackable housing set
Housing type	Profile housing
Housing series	UM-BASIC

### Dimensions

Width	83.8 mm
Height	92.3 mm
Depth	39.45 mm
Depth from top edge of DIN rail	32.45 mm
Dimensions	72 mm x 80 mm (PCB dimensions)

### PCB design

PCB thickness	1.4 mm ... 1.8 mm
---------------	-------------------

### Material specifications

Color (Housing)	light gray (RAL 7035)
Color	light gray (RAL 7035)
Material	PVC
Flammability rating according to UL 94	V0
Insulating material	PVC

### Environmental and real-life conditions

#### Ambient conditions

Ambient temperature (operation)	-15 °C ... 50 °C (depending on power dissipation)
Ambient temperature (storage/transport)	-40 °C ... 50 °C
Ambient temperature (assembly)	-5 °C ... 50 °C
Relative humidity (storage/transport)	95 %

### PCB data

Number of PCB holders	3
Type of PCB mount	Insertion/securing with additional elements
Total PCB surface	4300 mm <sup>2</sup>
Thickness of the PCB	1.4 mm ... 1.8 mm

### Mounting

Mounting type	DIN rail mounting
Mounting position	parallel to the DIN rail

# UM-BASIC-KIT-B72-L80-7035 - Housing set



1300345

<https://www.phoenixcontact.com/us/products/1300345>

## Packaging specifications

Type of packaging	packed in cardboard
Outer packaging type	Carton

# UM-BASIC-KIT-B72-L80-7035 - Housing set



1300345

<https://www.phoenixcontact.com/us/products/1300345>

## Approvals

To download certificates, visit the product detail page: <https://www.phoenixcontact.com/us/products/1300345>



**UL Recognized**

Approval ID: E240868

# UM-BASIC-KIT-B72-L80-7035 - Housing set



1300345

<https://www.phoenixcontact.com/us/products/1300345>

## Classifications

### ECLASS

ECLASS-13.0	27190301
ECLASS-15.0	27190301

### ETIM

ETIM 10.0	EC001031
-----------	----------

### UNSPSC

UNSPSC 21.0	31261500
-------------	----------

# UM-BASIC-KIT-B72-L80-7035 - Housing set



1300345

<https://www.phoenixcontact.com/us/products/1300345>

## Environmental product compliance

### EU RoHS

Fulfills EU RoHS substance requirements	Yes, No exemptions
---	--------------------

### China RoHS

Environment friendly use period (EFUP)	EFUP-E
	No hazardous substances above the limits

### EU REACH SVHC

REACH candidate substance (CAS No.)	No substance above 0.1 wt%
-------------------------------------	----------------------------

Phoenix Contact 2026 © - all rights reserved  
<https://www.phoenixcontact.com>

Phoenix Contact USA  
586 Fulling Mill Road  
Middletown, PA 17057, United States  
(+717) 944-1300  
[info@phoenixcon.com](mailto:info@phoenixcon.com)