

TU-12P1N126EC1X - Device connector front mounting



1242033

<https://www.phoenixcontact.com/us/products/1242033>

Please be informed that the data shown in this PDF document is generated from our online catalog. Please find the complete data in the user documentation. Our general terms of use for downloads are valid.



Device connector front mounting, application: Signal, No. of pos.: 12, Direction of rotation: Standard, contact connection type: Pin, Solder cup, coding: N, Item is lead-free in accordance with RoHS II without Exemption 6c (Pb < 0.1 %). This product is in the process of being discontinued. This product must no longer be considered for new projects. Please contact your sales representative for alternatives.

Commercial data

Item number	1242033
Packing unit	20 pc
Minimum order quantity	1 pc
Product key	ABRAHL
GTIN	4063151443467
Weight per piece (including packing)	37.427 g
Weight per piece (excluding packing)	37.427 g
Country of origin	DE

1242033

<https://www.phoenixcontact.com/us/products/1242033>

Technical data

Mounting

Mounting type	Front mounting
---------------	----------------

Product properties

Product type	Circular connectors (device side)
--------------	-----------------------------------

Connector

Insulating body

Coding	N
Material (Insulating body)	PBT
Material (Contact)	CuZn
Material (Contact surface)	Ni/Au
Insertion/withdrawal cycles	100
Connection method	Solder cup
Contact switching type	Pin
Application	Signal
Number of positions	12
Direction of rotation	Standard
Connection profile	12
Number (Contact group 1)	12
Contact diameter (Contact group 1)	1 mm
Litz wires Min. cross section (Contact group 1)	0.08 mm ²
Litz wires Max. cross section (Contact group 1)	1 mm ²
Rated current Contact (Contact group 1)	8 A (for max. connection cross section)
Rated voltage Contact (Contact group 1)	48 V AC 74 V DC
Rated surge voltage	1.5 kV
Overvoltage category	III
Degree of pollution	3

TU-12P1N126EC1X - Device connector front mounting

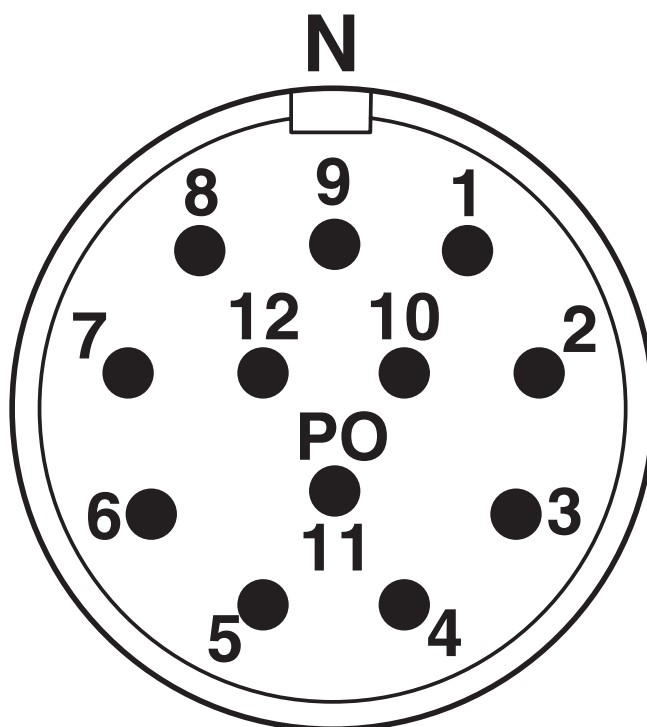


1242033

<https://www.phoenixcontact.com/us/products/1242033>

Drawings

Schematic diagram



Connector pin assignment

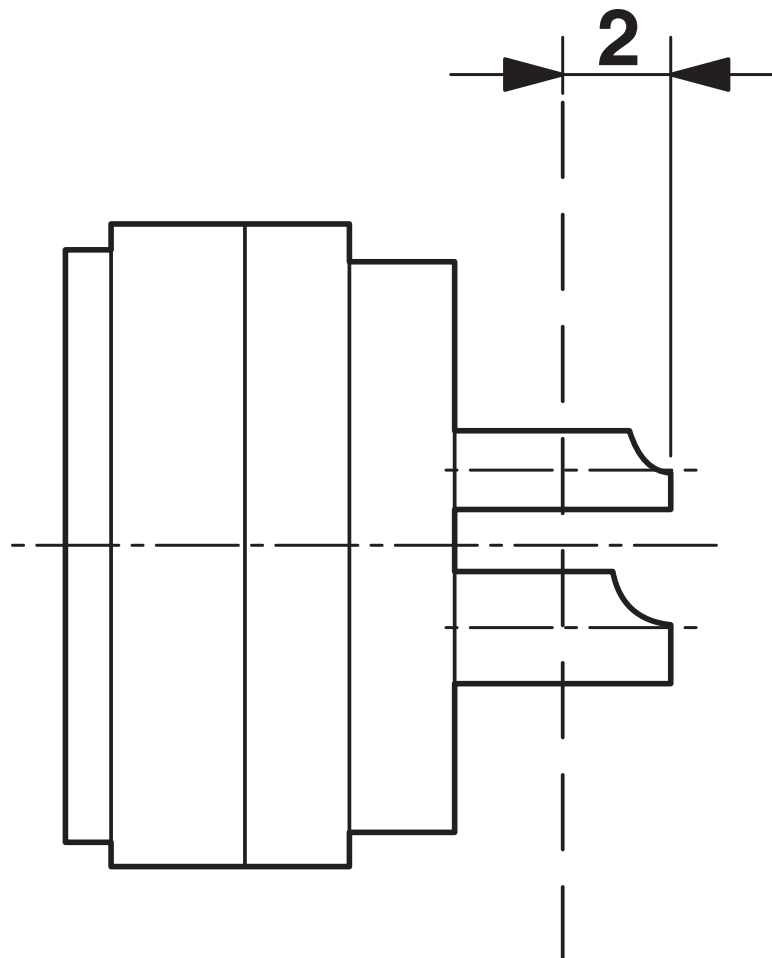
TU-12P1N126EC1X - Device connector front mounting



1242033

<https://www.phoenixcontact.com/us/products/1242033>

Schematic diagram



Dimensional drawing

TU-12P1N126EC1X - Device connector front mounting



1242033

<https://www.phoenixcontact.com/us/products/1242033>

Classifications

ECLASS

ECLASS-13.0	27440109
ECLASS-15.0	27440109

ETIM

ETIM 10.0	EC003569
-----------	----------

TU-12P1N126EC1X - Device connector front mounting



1242033

<https://www.phoenixcontact.com/us/products/1242033>

Environmental product compliance

EU RoHS

Fulfills EU RoHS substance requirements	Yes, No exemptions
---	--------------------

China RoHS

Environment friendly use period (EFUP)	EFUP-E
	No hazardous substances above the limits

EU REACH SVHC

REACH candidate substance (CAS No.)	No substance above 0.1 wt%
-------------------------------------	----------------------------

Phoenix Contact 2026 © - all rights reserved

<https://www.phoenixcontact.com>

Phoenix Contact USA
586 Fulling Mill Road
Middletown, PA 17057, United States
(+717) 944-1300
info@phoenixcon.com