

# RC-12S2N12Z500X - Cable connector



1241155

<https://www.phoenixcontact.com/us/products/1241155>

Please be informed that the data shown in this PDF document is generated from our online catalog. Please find the complete data in the user documentation. Our general terms of use for downloads are valid.



M23, Cable connector, application: Signal, series: RC, angled, shielded: no, Screw locking mechanism, No. of pos.: 12, Direction of rotation: Counter direction, contact connection type: Socket, Solder cup, coding: N, Item is lead-free in accordance with RoHS II without Exemption 6c (Pb < 0.1 %)

## Commercial data

Item number	1241155
Packing unit	8 pc
Minimum order quantity	1 pc
Product key	ABRAFC
GTIN	4063151423964
Weight per piece (including packing)	165.7 g
Weight per piece (excluding packing)	143.471 g
Country of origin	DE

# RC-12S2N12Z500X - Cable connector



1241155

<https://www.phoenixcontact.com/us/products/1241155>

## Technical data

### Product properties

Product type	Circular connector (cable-side)
Thread type	M23

### Material specifications

Flammability rating according to UL 94	V0
--	----

### Connection data

#### Conductor connection

Connection method	Solder connection
-------------------	-------------------

### Connector

#### Insulating body

Coding	N
Material (Insulating body)	PBT
Material (Contact)	CuZn
Material (Contact surface)	Ni/Au
Insertion/withdrawal cycles	50
Connection method	Solder cup
Contact switching type	Socket
Application	Signal
Number of positions	12
Direction of rotation	Counter direction
Connection profile	12
Number (Contact group 1)	12
Contact diameter (Contact group 1)	1 mm
Litz wires Min. cross section (Contact group 1)	0.08 mm <sup>2</sup>
Litz wires Max. cross section (Contact group 1)	1 mm <sup>2</sup>
Rated current Contact (Contact group 1)	8 A (for max. connection cross section)
Rated voltage Contact (Contact group 1)	48 V AC 74 V DC
Rated surge voltage	1.5 kV
Overvoltage category	III
Degree of pollution	3

#### Housing

Type	Cable connector housing
Thread type	M23
Design	angled
Type of locking	Screw locking mechanism
Pg screw connection	Pg9

# RC-12S2N12Z500X - Cable connector



1241155

<https://www.phoenixcontact.com/us/products/1241155>

Material (Housing)	GD-Zn
Material (Housing surface)	Ni
Material (Rotating parts)	CuZn
Degree of protection (plugged in)	IP65
	IP67

## Environmental and real-life conditions

### Ambient conditions

Degree of protection	IP67
----------------------	------

# RC-12S2N12Z500X - Cable connector



1241155

<https://www.phoenixcontact.com/us/products/1241155>

## Drawings

Schematic diagram



Connector pin assignment

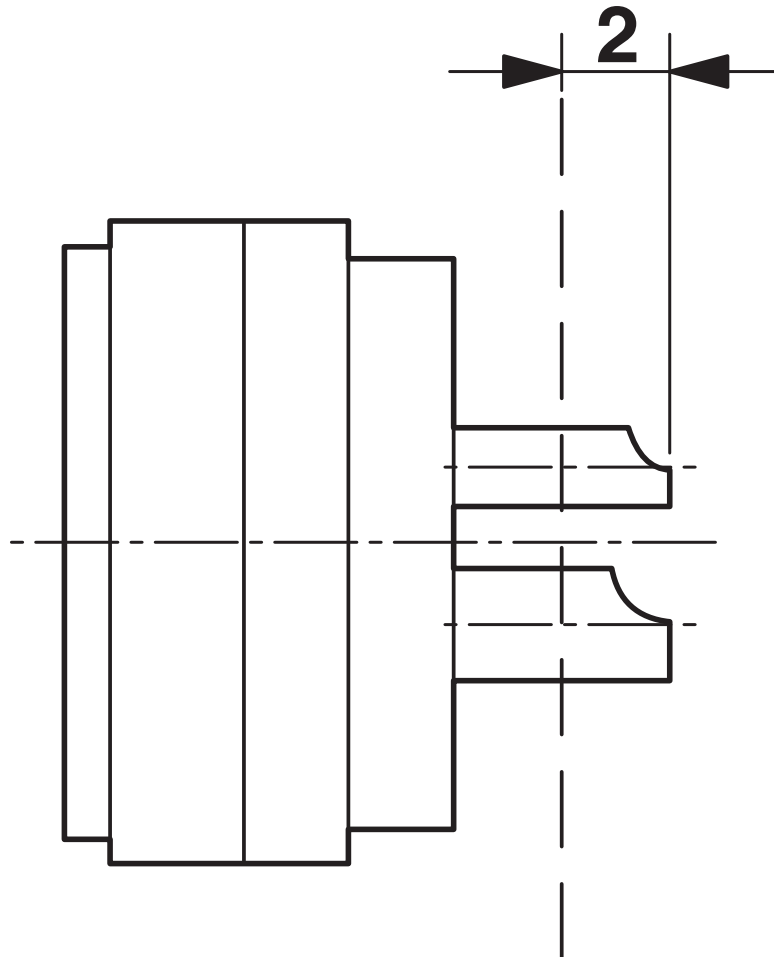
# RC-12S2N12Z500X - Cable connector



1241155

<https://www.phoenixcontact.com/us/products/1241155>

Schematic diagram



Dimensional drawing

# RC-12S2N12Z500X - Cable connector



1241155

<https://www.phoenixcontact.com/us/products/1241155>

## Classifications

### ECLASS

ECLASS-13.0

27440116

### ETIM

ETIM 9.0

EC003569

# RC-12S2N12Z500X - Cable connector



1241155

<https://www.phoenixcontact.com/us/products/1241155>

## Environmental product compliance

### EU RoHS

Fulfills EU RoHS substance requirements	Yes, No exemptions
---	--------------------

### China RoHS

Environment friendly use period (EFUP)	EFUP-E
	No hazardous substances above the limits

### EU REACH SVHC

REACH candidate substance (CAS No.)	No substance above 0.1 wt%
-------------------------------------	----------------------------

Phoenix Contact 2026 © - all rights reserved  
<https://www.phoenixcontact.com>

Phoenix Contact USA  
586 Fulling Mill Road  
Middletown, PA 17057, United States  
(+717) 944-1300  
[info@phoenixcon.com](mailto:info@phoenixcon.com)