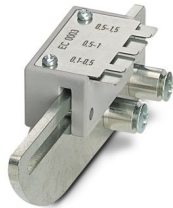


CF 500/LOC SCF 2,8/1,5 - Crimp locator

1212249

<https://www.phoenixcontact.com/us/products/1212249>

Please be informed that the data shown in this PDF document is generated from our online catalog. Please find the complete data in the user documentation. Our general terms of use for downloads are valid.



Ferrule holder for CF 500 automatic crimping device, for slip-on sleeves (SCF 2,8...), 0.1 mm²-1.5 mm², width: 2.8 mm, length 5 mm

Product description

For slip-on sleeve 2.8x0.8 mm, length: 5 mm

Commercial data

Item number	1212249
Packing unit	1 pc
Minimum order quantity	1 pc
Sales key	BH32
Product key	BH323Z
GTIN	4046356450096
Weight per piece (including packing)	92 g
Weight per piece (excluding packing)	89.7 g
Customs tariff number	84799070
Country of origin	DE

CF 500/LOC SCF 2,8/1,5 - Crimp locator



1212249

<https://www.phoenixcontact.com/us/products/1212249>

Technical data

Product properties

Product type	Sleeve receiver
--------------	-----------------

Connection data

Conductor cross-section flexible	0.1 mm ² ... 1.5 mm ²
----------------------------------	---

CF 500/LOC SCF 2,8/1,5 - Crimp locator



1212249

<https://www.phoenixcontact.com/us/products/1212249>

Approvals

To download certificates, visit the product detail page: <https://www.phoenixcontact.com/us/products/1212249>



EAC

Approval ID: RU C-DE.AI30.B.01549

CF 500/LOC SCF 2,8/1,5 - Crimp locator



1212249

<https://www.phoenixcontact.com/us/products/1212249>

Classifications

ECLASS

ECLASS-13.0	17130192
ECLASS-15.0	17130192

ETIM

ETIM 10.0	EC002778
-----------	----------

UNSPSC

UNSPSC 21.0	27111500
-------------	----------

CF 500/LOC SCF 2,8/1,5 - Crimp locator



1212249

<https://www.phoenixcontact.com/us/products/1212249>

Environmental product compliance

EU RoHS

Fulfills EU RoHS substance requirements	Yes, No exemptions
---	--------------------

EU REACH SVHC

REACH candidate substance (CAS No.)	No substance above 0.1 wt%
-------------------------------------	----------------------------

EF3.1 Climate Change

CO2e kg	11.87 kg CO2e
---------	---------------

Phoenix Contact 2026 © - all rights reserved
<https://www.phoenixcontact.com>

Phoenix Contact USA
586 Fulling Mill Road
Middletown, PA 17057, United States
(+717) 944-1300
info@phoenixcon.com