

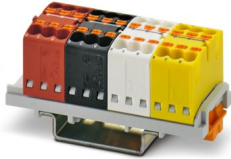
# PTFIX 1,5-KNX-NS35 - Function distribution block



1187192

<https://www.phoenixcontact.com/us/products/1187192>

Please be informed that the data shown in this PDF document is generated from our online catalog. Please find the complete data in the user documentation. Our general terms of use for downloads are valid.



Function distribution block, for KNX bus in building installation, individual block is bridged internally, color in accordance with EIB cable coding, arrangement: inline, nom. voltage: 500 V, nominal current: 17.5 A, number of connections: 24, connection method: Push-in connection, cross section: 0.14 mm<sup>2</sup> - 2.5 mm<sup>2</sup>, mounting type: NS 15, NS 35/7,5, NS 35/15

## Commercial data

Item number	1187192
Packing unit	10 pc
Minimum order quantity	10 pc
Sales key	BE09
Product key	BEA191
GTIN	4063151230456
Weight per piece (including packing)	25.86 g
Weight per piece (excluding packing)	22.667 g
Customs tariff number	85369010
Country of origin	PL

# PTFIX 1,5-KNX-NS35 - Function distribution block



1187192

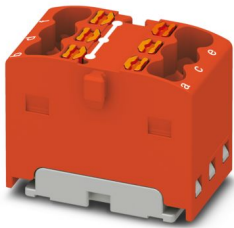
<https://www.phoenixcontact.com/us/products/1187192>

## Set consists of

### PTFIX 6X1,5 RD - Distribution block

3002765

<https://www.phoenixcontact.com/us/products/3002765>



Distribution block, nom. voltage: 450 V, nominal current: 17.5 A, number of connections: 6, connection method: Push-in connection, cross section: 0.14 mm<sup>2</sup> - 2.5 mm<sup>2</sup>, mounting type: for snapping onto a DIN rail adapter, Direct mounting with flange, Free-hanging, color: red

### PTFIX 6X1,5 BK - Distribution block

3002781

<https://www.phoenixcontact.com/us/products/3002781>



Distribution block, nom. voltage: 450 V, nominal current: 17.5 A, number of connections: 6, connection method: Push-in connection, cross section: 0.14 mm<sup>2</sup> - 2.5 mm<sup>2</sup>, mounting type: for snapping onto a DIN rail adapter, Direct mounting with flange, Free-hanging, color: black

# PTFIX 1,5-KNX-NS35 - Function distribution block

1187192

<https://www.phoenixcontact.com/us/products/1187192>

## PTFIX 6X1,5 WH - Distribution block

3002778

<https://www.phoenixcontact.com/us/products/3002778>



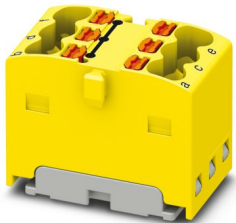
Distribution block, nom. voltage: 450 V, nominal current: 17.5 A, number of connections: 6, connection method: Push-in connection, cross section: 0.14 mm<sup>2</sup> - 2.5 mm<sup>2</sup>, mounting type: for snapping onto a DIN rail adapter, Direct mounting with flange, Free-hanging, color: white

---

## PTFIX 6X1,5 YE - Distribution block

3002768

<https://www.phoenixcontact.com/us/products/3002768>



Distribution block, nom. voltage: 450 V, nominal current: 17.5 A, number of connections: 6, connection method: Push-in connection, cross section: 0.14 mm<sup>2</sup> - 2.5 mm<sup>2</sup>, mounting type: for snapping onto a DIN rail adapter, Direct mounting with flange, Free-hanging, color: yellow

# PTFIX 1,5-KNX-NS35 - Function distribution block



1187192

<https://www.phoenixcontact.com/us/products/1187192>

## PTFIX 1,5-NS35 - DIN rail adapter

1049497

<https://www.phoenixcontact.com/us/products/1049497>

DIN rail adapter, for NS 35 and NS 15 for accommodating 1.5 mm<sup>2</sup> FIX blocks in vertical direction, color: gray



# PTFIX 1,5-KNX-NS35 - Function distribution block



1187192

<https://www.phoenixcontact.com/us/products/1187192>

## Technical data

### Product properties

Product type	Distributor terminal block
Number of connections	24
Number of rows	1

### Insulation characteristics

Overvoltage category	III
Degree of pollution	3

### Electrical properties

Rated surge voltage	6 kV
Maximum power dissipation for nominal condition	0.56 W

### Connection data

Number of connections per level	24
Nominal cross section	1.5 mm <sup>2</sup>
Rated cross section AWG	14
Connection method	Push-in connection
Stripping length	8 mm ... 10 mm
Internal cylindrical gage	A1 / B1
Connection in acc. with standard	IEC 60947-7-1
Conductor cross-section rigid	0.14 mm <sup>2</sup> ... 2.5 mm <sup>2</sup>
Cross section AWG	26 ... 14 (converted acc. to IEC)
Conductor cross-section flexible	0.14 mm <sup>2</sup> ... 2.5 mm <sup>2</sup>
Conductor cross-section, flexible [AWG]	24 ... 14 (converted acc. to IEC)
Conductor cross-section flexible (ferrule without plastic sleeve)	0.14 mm <sup>2</sup> ... 1.5 mm <sup>2</sup>
Flexible conductor cross-section (ferrule with plastic sleeve)	0.14 mm <sup>2</sup> ... 1.5 mm <sup>2</sup>
Nominal current	17.5 A
Maximum load current	22 A
Maximum total current	26 A
Nominal voltage	500 V

### Connection cross sections directly pluggable

Conductor cross-section rigid	0.34 mm <sup>2</sup> ... 2.5 mm <sup>2</sup>
Conductor cross-section flexible (ferrule without plastic sleeve)	0.34 mm <sup>2</sup> ... 1.5 mm <sup>2</sup>
Flexible conductor cross-section (ferrule with plastic sleeve)	0.34 mm <sup>2</sup> ... 1.5 mm <sup>2</sup>

### Dimensions

Width	21.6 mm
Height	58.1 mm
Depth	24.4 mm
Depth on NS 15	29.9 mm

# PTFIX 1,5-KNX-NS35 - Function distribution block



1187192

<https://www.phoenixcontact.com/us/products/1187192>

Depth on NS 35/7,5	31.9 mm
Depth on NS 35/15	39.4 mm

## Material specifications

Color	multicolored (RAL -)
Flammability rating according to UL 94	V0
Insulating material group	I
Insulating material	PA

## Mechanical properties

### Mechanical data

Open side panel	No
-----------------	----

## Environmental and real-life conditions

### Ambient conditions

Ambient temperature (operation)	-60 °C ... 110 °C (Operating temperature range incl. self-heating; for max. short-term operating temperature, see RTI Elec.)
Ambient temperature (storage/transport)	-25 °C ... 60 °C (for a short time, not exceeding 24 h, -60 °C to +70 °C)
Ambient temperature (assembly)	-5 °C ... 70 °C
Ambient temperature (actuation)	-5 °C ... 70 °C
Permissible humidity (operation)	20 % ... 90 %
Permissible humidity (storage/transport)	30 % ... 70 %

## Standards and regulations

Connection in acc. with standard	IEC 60947-7-1
----------------------------------	---------------

## Mounting

Mounting type	NS 15
	NS 35/7,5
	NS 35/15

# PTFIX 1,5-KNX-NS35 - Function distribution block



1187192

<https://www.phoenixcontact.com/us/products/1187192>

## Approvals

To download certificates, visit the product detail page: <https://www.phoenixcontact.com/us/products/1187192>

DNV Approval ID: TAE00002TT-05				
	Nominal voltage $U_N$	Nominal current $I_N$	Cross section AWG	Cross section $\text{mm}^2$
keine				
	500 V	24 A	-	-

EAC Approval ID: KZ7500651131219505	
--	--

# PTFIX 1,5-KNX-NS35 - Function distribution block



1187192

<https://www.phoenixcontact.com/us/products/1187192>

## Classifications

### ECLASS

ECLASS-13.0	27250118
ECLASS-15.0	27250118

### ETIM

ETIM 10.0	EC000897
-----------	----------

### UNSPSC

UNSPSC 21.0	39121400
-------------	----------

# PTFIX 1,5-KNX-NS35 - Function distribution block



1187192

<https://www.phoenixcontact.com/us/products/1187192>

## Environmental product compliance

### EU RoHS

Fulfills EU RoHS substance requirements	Yes, No exemptions
---	--------------------

### China RoHS

Environment friendly use period (EFUP)	EFUP-E
	No hazardous substances above the limits

### EU REACH SVHC

REACH candidate substance (CAS No.)	No substance above 0.1 wt%
-------------------------------------	----------------------------

### EF3.1 Climate Change

CO2e kg	0.24 kg CO2e
---------	--------------

Phoenix Contact 2026 © - all rights reserved  
<https://www.phoenixcontact.com>

Phoenix Contact USA  
586 Fulling Mill Road  
Middletown, PA 17057, United States  
(+717) 944-1300  
[info@phoenixcon.com](mailto:info@phoenixcon.com)