

CASE PTFIX L-BOXX MINI DE - System package



1182117

<https://www.phoenixcontact.com/us/products/1182117>

Please be informed that the data shown in this PDF document is generated from our online catalog. Please find the complete data in the user documentation. Our general terms of use for downloads are valid.



PTFIX set in a practical Sortimo L-BOXX Mini system case. 10 distribution blocks with feed-in contact for conductor cross-sections up to 10 mm² and pick-off contacts for conductor cross-sections up to 6 mm², 10 DIN rail adapters and marking material

Commercial data

Item number	1182117
Packing unit	1 pc
Minimum order quantity	1 pc
Product key	BEA191
GTIN	4063151218881
Weight per piece (including packing)	721 g
Weight per piece (excluding packing)	715 g
Country of origin	PL

CASE PTFIX L-BOXX MINI DE - System package



1182117

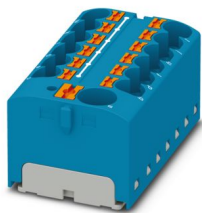
<https://www.phoenixcontact.com/us/products/1182117>

Set consists of

PTFIX 10/12X4 BU - Distribution block

3273880

<https://www.phoenixcontact.com/us/products/3273880>

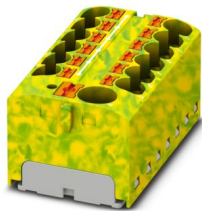


Distribution block, nom. voltage: 450 V, nominal current: 32 A, number of connections: 13, connection method: Push-in connection, Rated cross section: 4 mm², Load contact, cross section: 0.2 mm² - 6 mm², Push-in connection, Line contact, Rated cross section: 10 mm², cross section: 0.5 mm² - 10 mm², mounting type: for snapping onto a DIN rail adapter, Direct mounting with flange, Free-hanging, color: blue

PTFIX 10/12X4 GNYE - Distribution block

1153438

<https://www.phoenixcontact.com/us/products/1153438>



Distribution block, Basic terminal block with feed-in without protective conductor function, nom. voltage: 450 V, nominal current: 32 A, number of connections: 13, connection method: Push-in connection, Rated cross section: 4 mm², Load contact, cross section: 0.2 mm² - 6 mm², Push-in connection, Line contact, Rated cross section: 10 mm², cross section: 0.5 mm² - 10 mm², mounting type: Free-hanging, color: green-yellow

CASE PTFIX L-BOXX MINI DE - System package



1182117

<https://www.phoenixcontact.com/us/products/1182117>

PTFIX-NS35 - DIN rail adapter

3274054

<https://www.phoenixcontact.com/us/products/3274054>

DIN rail adapter, for NS 35 and NS 15 for accommodating 2.5 mm², 4 mm², and 10 mm² FIX blocks in vertical direction, color: gray

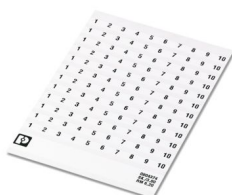


SK 6,2/3,8:FORTL.ZAHLEN 1-10 - Marker for terminal blocks

0804374:0001

<https://www.phoenixcontact.com/us/products/0804374:0001>

Marker card, self-adhesive, horizontally labeled with the consecutive numbers: 1 ... 10, 10-section marker strips with 12 identical decades, white, for terminal block width: 6.2 mm, mounting type: adhesive



CASE PTFIX L-BOXX MINI DE - System package



1182117

<https://www.phoenixcontact.com/us/products/1182117>

Technical data

Product properties

Product type	Distributor terminal block
Set comprises	0804374:0011 SK 6,2/3,8:FORTL.ZAHLEN 11-20

Dimensions

Width	445 mm
Height	358 mm
Depth	118 mm

Material specifications

Color	black (RAL 9005)
-------	------------------

CASE PTFIX L-BOXX MINI DE - System package



1182117

<https://www.phoenixcontact.com/us/products/1182117>

Approvals

To download certificates, visit the product detail page: <https://www.phoenixcontact.com/us/products/1182117>



EAC

Approval ID: KZ7500651131219505

1182117

<https://www.phoenixcontact.com/us/products/1182117>

Classifications

ECLASS

ECLASS-13.0	27141190
ECLASS-15.0	27141190

ETIM

ETIM 10.0	EC002848
-----------	----------

UNSPSC

UNSPSC 21.0	39121400
-------------	----------

CASE PTFIX L-BOXX MINI DE - System package



1182117

<https://www.phoenixcontact.com/us/products/1182117>

Environmental product compliance

EU RoHS

Fulfills EU RoHS substance requirements	Not applicable, No electrical and electronic equipment (EEE), cannot be used in EEE
---	---

EU REACH SVHC

REACH candidate substance (CAS No.)	No substance above 0.1 wt%
-------------------------------------	----------------------------

Phoenix Contact 2026 © - all rights reserved

<https://www.phoenixcontact.com>

Phoenix Contact USA
586 Fulling Mill Road
Middletown, PA 17057, United States
(+717) 944-1300
info@phoenixcon.com