

SACC-DSI-M12MSL4FE-M16XL/1,0GR - Device connector rear mounting



1163085

<https://www.phoenixcontact.com/us/products/1163085>

Please be informed that the data shown in this PDF document is generated from our online catalog. Please find the complete data in the user documentation. Our general terms of use for downloads are valid.



Device connector rear mounting, Power, 5-position, Pin, M12, L-coding, on free cable end, Individual wires, cable length: 1 m, 2.50 mm², PEX litz wire, Alternative product in accordance with RoHS II without Exemption 6c (Pb < 0.1 %) item no.: 1238573

Your advantages

- For compact devices: transmit high power in a confined space
- Easy-to-install, optimized XL housing contour with wrench size 19
- Mechanical tightening limitation for long-term-stable gasket
- Preassembled with litz wires for immediate use
- Customer-specific assemblies and litz wire lengths available
- Sealed on the litz wire side for optimum leak-tightness
- For high transmission safety: shield connection to the housing with optional EMC nut

Commercial data

| | |
|--------------------------------------|---------------|
| Item number | 1163085 |
| Packing unit | 1 pc |
| Minimum order quantity | 1 pc |
| Sales key | AB24 |
| Product key | ABQCGG |
| GTIN | 4063151174651 |
| Weight per piece (including packing) | 22.22 g |
| Weight per piece (excluding packing) | 161.33 g |
| Customs tariff number | 85444290 |
| Country of origin | DE |

SACC-DSI-M12MSL4FE-M16XL/1,0GR - Device connector rear mounting



1163085

<https://www.phoenixcontact.com/us/products/1163085>

Technical data

Notes

| | |
|--------------------|--|
| Notes on operation | The electrical and mechanical data specified assume that the connector pair is correctly locked and mounted. If the connector is unlocked and if there is a danger of contamination, the connector must be sealed using a protective cap > IP54. Influences arising from litz wires, cables or PCB assembly must also be taken into consideration. |
| Notes on operation | FE not connected to metal parts that can be touched, no protective function |
| Order information: | Lock nut is included in the scope of delivery |

Mounting

| | |
|-------------------|---------------------------------------|
| Tightening torque | 0.8 Nm ... 1.3 Nm (Installation-side) |
|-------------------|---------------------------------------|

Product properties

| | |
|----------------------|-----------------------------------|
| Product type | Circular connectors (device side) |
| Sensor type | Power |
| Number of positions | 5 |
| No. of cable outlets | 1 |
| Shielded | no |
| Coding | L |
| Thread type | M12 |

Insulation characteristics

| | |
|----------------------|-----|
| Overvoltage category | III |
| Degree of pollution | 3 |

Material specifications

| | |
|--|------------------------------|
| Color | gray |
| Flammability rating according to UL 94 | V0 |
| Seal material | FKM |
| Material of grip body | Zinc die-cast, nickel-plated |
| Contact material | CuZn |
| Contact surface material | Au |
| Contact carrier material | PA |
| Material for screw connection | Zinc die-cast, nickel-plated |
| Conductor material | Tin-plated Cu litz wires |

Electrical properties

| | |
|--|--------------|
| Rated voltage in acc. with IEC 61076-2-101 | 63 V |
| Rated surge voltage | 1.5 kV |
| Rated surge voltage | 1.5 kV AC/DC |

SACC-DSI-M12MSL4FE-M16XL/1,0GR - Device connector rear mounting



1163085

<https://www.phoenixcontact.com/us/products/1163085>

| | |
|-----------------------|---------|
| Nominal voltage U_N | 63 V DC |
| Nominal current I_N | 16 A |

Connection data

Conductor connection

| | |
|-------------------------|---------------------------------------|
| Connection method | Individual wires |
| Contact connection type | Pin |
| Conductor cross-section | 2.5 mm ² |
| Tightening torque | 0.8 Nm ... 1.3 Nm (Installation-side) |

Mechanical properties

Mechanical data

| | |
|-----------------------------|-------|
| Insertion/withdrawal cycles | > 100 |
|-----------------------------|-------|

Connector

Connection 1

| | |
|------------------|-----|
| Head design | Pin |
| Head thread type | M12 |
| Coding | L |

Connection 2

| | |
|-------------|----------------|
| Head design | free cable end |
|-------------|----------------|

Cable/line

| | |
|---------------------------------|--|
| Cable length | 1 m |
| Cable type | PEX litz wire |
| Signal type/category | Power |
| Single wire, color | brown 1, white 2, blue 3, black 4, pink FE |
| Cable cross section | 2.5 mm ² |
| Conductor material | Tin-plated Cu litz wires |
| AWG signal line | 14 |
| Halogen-free | according to IEC 60754-1 |
| Flame resistance | in acc. with UL FT-2 |
| Ambient temperature (operation) | -40 °C ... 85 °C (without mechanical actuation) |
| | -40 °C ... 85 °C (without mechanical actuation) |
| | -25 °C ... 105 °C (Cable, flexible installation) |

Environmental and real-life conditions

Ambient conditions

| | |
|---|----------------------------------|
| Degree of protection | IP67 |
| | IP65/IP67 |
| Ambient temperature (operation) (male connector/female) | -25 °C ... 85 °C (Plug / socket) |

SACC-DSI-M12MSL4FE-M16XL/1,0GR - Device connector rear mounting



1163085

<https://www.phoenixcontact.com/us/products/1163085>

| | |
|--|--|
| connector) | |
| Ambient temperature (operation) (Cable, fixed installation) | -40 °C ... 85 °C (without mechanical actuation) |
| Ambient temperature (operation) (Cable, flexible installation) | -25 °C ... 105 °C (Cable, flexible installation) |
| Ambient temperature (operation) (Cable, fixed installation) | -40 °C ... 105 °C (cable, fixed installation) |

Standards and regulations

| | |
|--------------------------|------------------------------|
| Flame resistance | in acc. with UL FT-2 |
| Standard designation | M12 circular connector |
| Standards/specifications | according to IEC 61076-2-111 |

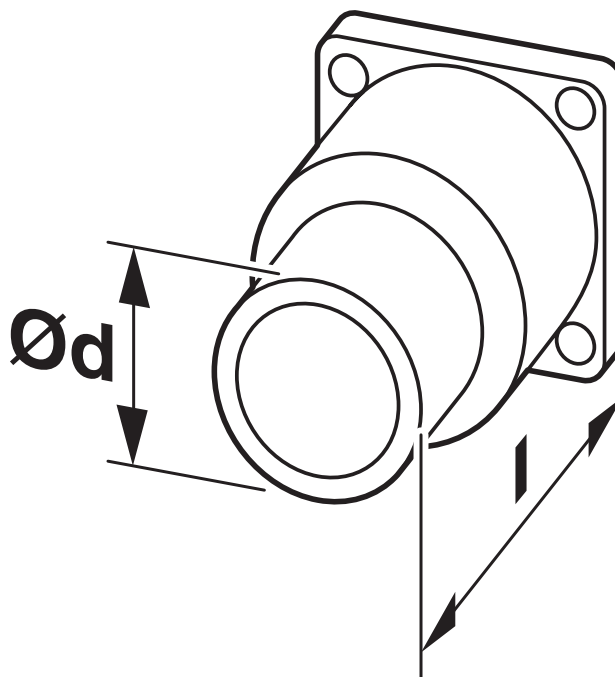
SACC-DSI-M12MSL4FE-M16XL/1,0GR - Device connector rear mounting

1163085

<https://www.phoenixcontact.com/us/products/1163085>

Drawings

Dimensional drawing



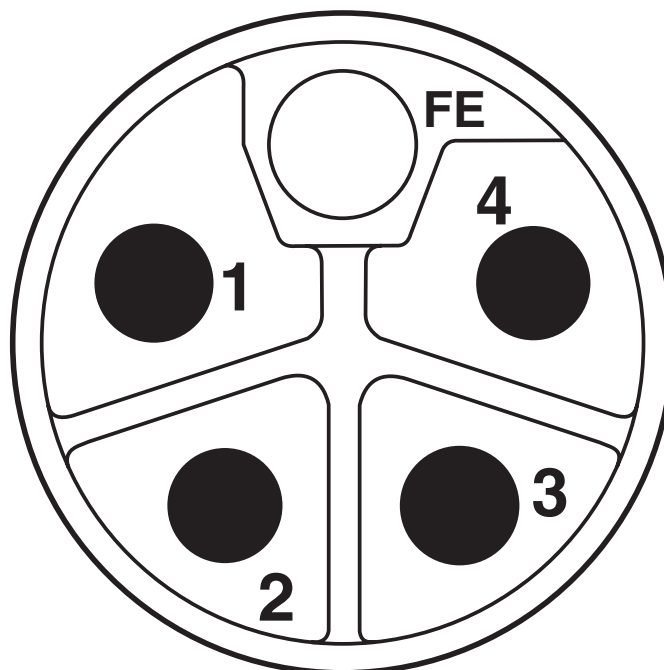
Technical drawings can be found under Downloads

SACC-DSI-M12MSL4FE-M16XL/1,0GR - Device connector rear mounting

1163085

<https://www.phoenixcontact.com/us/products/1163085>

Schematic diagram



Pin assignment of M12 connector, 5-pos., L-coded, pin side view

SACC-DSI-M12MSL4FE-M16XL/1,0GR - Device connector rear mounting



1163085

<https://www.phoenixcontact.com/us/products/1163085>

Classifications

ECLASS

ECLASS-13.0

27440116

ETIM

ETIM 9.0

EC002635

UNSPSC

UNSPSC 21.0

39121400

SACC-DSI-M12MSL4FE-M16XL/1,0GR - Device connector rear mounting



1163085

<https://www.phoenixcontact.com/us/products/1163085>

Environmental product compliance

EU RoHS

| | |
|---|------|
| Fulfills EU RoHS substance requirements | Yes |
| Exemption | 6(c) |

China RoHS

| | |
|--|--|
| Environment friendly use period (EFUP) | EFUP-50 An article-related China RoHS declaration table can be found in the download area for the respective article under "Manufacturer declaration". For all articles with EFUP-E, no China RoHS declaration table issued and required. |
|--|--|

EU REACH SVHC

| | |
|-------------------------------------|--------------------------------------|
| REACH candidate substance (CAS No.) | Lead(CAS: 7439-92-1) |
| SCIP | 0295d90a-36d0-4229-8321-d02ff47ca5cb |

Phoenix Contact 2026 © - all rights reserved
<https://www.phoenixcontact.com>

Phoenix Contact USA
586 Fulling Mill Road
Middletown, PA 17057, United States
(+717) 944-1300
info@phoenixcon.com