

SACB-8/16-10,0PUR P12 SH - Distributor box



1155995

<https://www.phoenixcontact.com/us/products/1155995>

Please be informed that the data shown in this PDF document is generated from our online catalog. Please find the complete data in the user documentation. Our general terms of use for downloads are valid.



Distributor box, application: Standard, extended requirements, connection method: M12 PUSH-PULL female connector Metal / M12 socket, number of slots: 8, number of positions: 5, coding: A, slot assignment: Double, status display: no, Universal; master cable connection: Fixed connection 180°, PUR/PVC, cable length: 10 m, shielding: yes

Your advantages

- Safety in the field, thanks to molded housing and high degree of protection
- Save space: distributor box with double occupancy for two sensors in one slot
- Reliable signal transmission – 360° shielding in environments with electromagnetic interference

Commercial data

| | |
|--------------------------------------|---------------|
| Item number | 1155995 |
| Packing unit | 1 pc |
| Minimum order quantity | 1 pc |
| Sales key | BF43 |
| Product key | AF3CDA |
| GTIN | 4063151157258 |
| Weight per piece (including packing) | 2,978 g |
| Weight per piece (excluding packing) | 2,978 g |
| Customs tariff number | 85444290 |
| Country of origin | DE |

Technical data

Notes

| | |
|---------------------|---|
| Assembly note | NOTE: Observe the permissible bending radii when routing cables, since the degree of protection may be at risk if the bending forces are too high. Reduce mechanical loads upstream of the connector, e.g., by using cable ties. |
| Note on application | Unused slots are to be sealed off prior to commissioning. Suitable sealing elements are to be found under "Accessories". |

Product properties

| | |
|---------------------|---------------------------------|
| Product type | Distributor box |
| Application | Standard, extended requirements |
| Number of positions | 5 |
| Number of slots | 8 |
| Coding | A |

Electrical properties

| | |
|---|--------------------|
| Nominal voltage U_N | 48 V AC |
| | 60 V DC |
| Rated current, total | 12 A (up to 40 °C) |
| Max. current carrying capacity per path | 2 A |
| Current carrying capacity per slot | 4 A |

Connection data

Conductor connection

| | |
|--|--------------------------------|
| Sensor/actuator connection system | M12 PUSH-PULL female connector |
| | M12 socket |
| Tightening torque slot sensor/actuator cable | 0.4 Nm |

Connection assignment

| | |
|--|------------------|
| Slot/position = Wire color or connection | 1 / 4 (A) = WH |
| | 1 / 2 (B) = GYPK |
| | 2 / 4 (A) = GN |
| | 2 / 2 (B) = RDBU |
| | 3 / 4 (A) = YE |
| | 3 / 2 (B) = WHGN |
| | 4 / 4 (A) = GY |
| | 4 / 2 (B) = BNGN |
| | 5 / 4 (A) = PK |
| | 5 / 2 (B) = WHYE |
| | 6 / 4 (A) = RD |
| | 6 / 2 (B) = YEBN |
| | 7 / 4 (A) = BK |

SACB-8/16-10,0PUR P12 SH - Distributor box



1155995

<https://www.phoenixcontact.com/us/products/1155995>

| | |
|--|-----------------------|
| | 7 / 2 (B) = WHGY |
| | 8 / 4 (A) = VT |
| | 8 / 2 (B) = GYBN |
| | 1-8 / 1 (+ 48 V) = BN |
| | 1-8 / 3 (0 V) = BU |
| | 1-8 / 5 (PE) = GNYE |

Signaling

| | |
|------------------------|----|
| Status display present | no |
|------------------------|----|

Dimensions

| | |
|---------------------|--------|
| Dimensional drawing | |
| Width | 58 mm |
| Height | 26 mm |
| Length | 153 mm |

Material specifications

| | |
|--|---------------|
| Material Threaded sleeve | Die-cast zinc |
| Material Housing | Die-cast zinc |
| Material Molding compound | PUR |
| Flammability rating according to UL 94 | V0 |
| Seal material Molded seal | FKM |
| Contact material | Cu alloy |
| Contact surface material | gold-plated |
| Contact carrier material | PA |

Cable/line

| | |
|--------------|------|
| Cable length | 10 m |
|--------------|------|

PUR/PVC shielded, black [PUR]

| | |
|---------------------|----|
| Dimensional drawing | |
| Number of positions | 19 |

SACB-8/16-10,0PUR P12 SH - Distributor box



1155995

<https://www.phoenixcontact.com/us/products/1155995>

| | |
|-------------------------------------|--|
| Shielded | yes |
| Cable type | PUR/PVC shielded, black [PUR] |
| Conductor structure signal line | 64x 0.10 mm |
| AWG signal line | 20 |
| Conductor structure, voltage supply | 128x 0.10 mm |
| AWG power supply | 17 |
| Conductor cross-section | 16x 0.5 mm ² (Signal line) 3x 1 mm ² (Power supply) |
| Wire diameter incl. insulation | 1.6 mm (Signal line) 2 mm (power line) |
| External cable diameter | 11.60 mm ±0.3 mm |
| Outer sheath, material | PUR |
| External sheath, color | deep black RAL 9005 |
| Conductor material | Bare Cu litz wires |
| Material wire insulation | PVC |
| Single wire, color | brown, blue, green/yellow, white, green, yellow, gray, pink, red, black, violet, gray/pink, red/blue, white/green, brown/green, white/yellow, yellow/brown, white/gray, gray/brown |
| Overall twist | Wires twisted in layers |
| Nominal voltage, cable | 300 V |
| Test voltage | 2000 V |
| Dynamic load capacity (bending) | Max. bending cycles: 1500000, Bending radius: 10 x D, Traversing path: 2 m, Traversing rate: 2 m/s |
| Flame resistance | DIN EN 50265 |
| Resistance to oil | according to VDE 0472 Part 803 |
| Other resistance | Highly resistant to acids, alkaline solutions and solvents |
| Special properties | Silicone-free Free of substances which would hinder coating with paint or varnish |
| Ambient temperature (operation) | -40 °C ... 90 °C (cable, fixed installation) -5 °C ... 80 °C (Cable, flexible installation) |

Environmental and real-life conditions

Ambient conditions

| | |
|---------------------------------|------------------|
| Degree of protection | IP65 |
| Ambient temperature (operation) | -25 °C ... 70 °C |

Standards and regulations

M12

| | |
|--------------------------|-----------------|
| Standard designation | M12 connector |
| Standards/specifications | IEC 61076-2-101 |

SACB-8/16-10,0PUR P12 SH - Distributor box

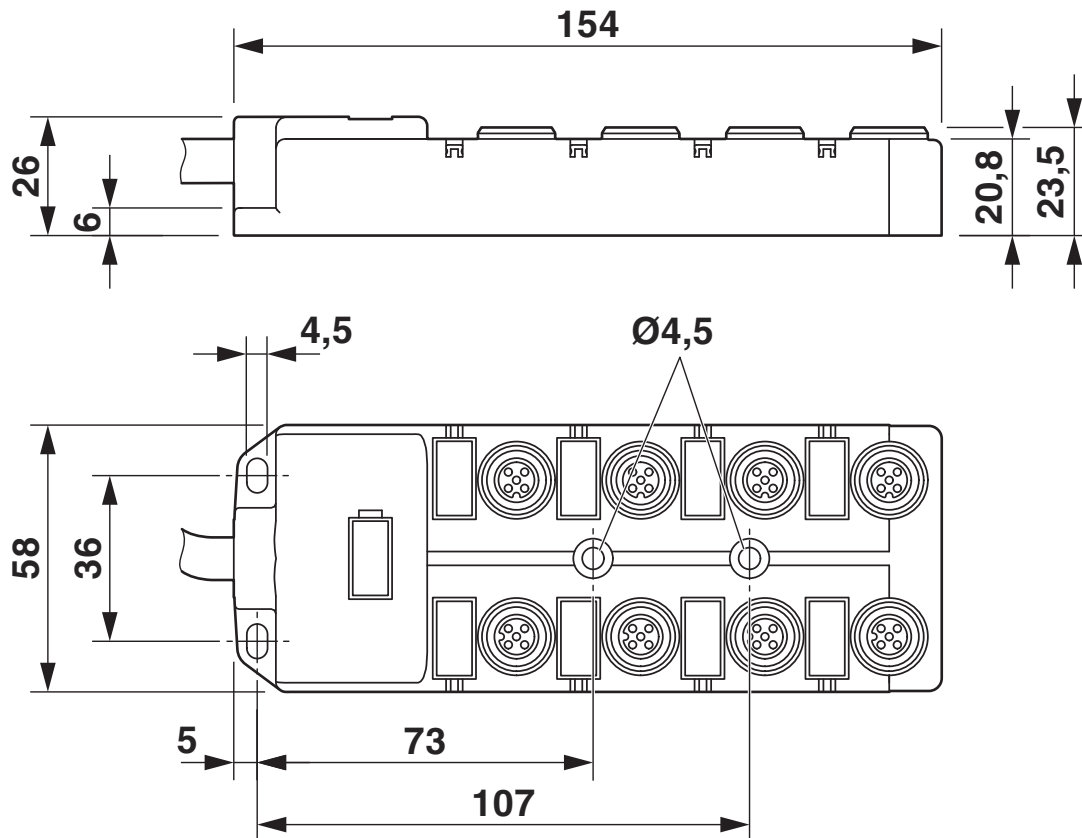


1155995

<https://www.phoenixcontact.com/us/products/1155995>

Drawings

Dimensional drawing



SACB-8/16-10,0PUR P12 SH - Distributor box

1155995

<https://www.phoenixcontact.com/us/products/1155995>

Schematic diagram



M12 slot, socket, 5-pos.

Circuit diagram



SACB-8/16-10,0PUR P12 SH - Distributor box



1155995

<https://www.phoenixcontact.com/us/products/1155995>

Classifications

ECLASS

| | |
|-------------|----------|
| ECLASS-15.0 | 27440108 |
| ECLASS-13.0 | 27440108 |

ETIM

| | |
|-----------|----------|
| ETIM 10.0 | EC002585 |
|-----------|----------|

UNSPSC

| | |
|-------------|----------|
| UNSPSC 21.0 | 31251500 |
|-------------|----------|

1155995

<https://www.phoenixcontact.com/us/products/1155995>

Environmental product compliance

EU RoHS

| | |
|---|------|
| Fulfills EU RoHS substance requirements | Yes |
| Exemption | 6(a) |

China RoHS

| | |
|--|---|
| Environment friendly use period (EFUP) | EFUP-50 |
| | An article-related China RoHS declaration table can be found in the download area for the respective article under "Manufacturer declaration". For all articles with EFUP-E, no China RoHS declaration table issued and required. |

EU REACH SVHC

| | |
|-------------------------------------|--------------------------------------|
| REACH candidate substance (CAS No.) | Lead(CAS: 7439-92-1) |
| SCIP | c2fa4763-6cb6-4476-9544-31b7fa13d483 |

Phoenix Contact 2026 © - all rights reserved

<https://www.phoenixcontact.com>

Phoenix Contact USA
586 Fulling Mill Road
Middletown, PA 17057, United States
(+717) 944-1300
info@phoenixcon.com