

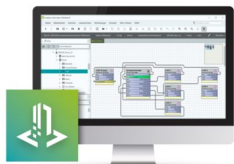
PARTNER-ACCESS - Building management system



1139362

<https://www.phoenixcontact.com/us/products/1139362>

Please be informed that the data shown in this PDF document is generated from our online catalog. Please find the complete data in the user documentation. Our general terms of use for downloads are valid.



Access to the Emyalytics Automation license portal for 1 year (May 1 - April 30).

Enables you to view, download, and move Emyalytics Automation licenses. It is not possible to purchase new licenses independently. The order must still be placed via your Phoenix Contact sales team.

The actual total billing amount is calculated based on the remaining period through to April 30.



Commercial data

Item number	1139362
Packing unit	1 pc
Minimum order quantity	1 pc
Note	Made to order (non-returnable)
Product key	DRHBAA
GTIN	4063151086961
Weight per piece (including packing)	0.001 MGM
Weight per piece (excluding packing)	0.001 MGM
Country of origin	US

1139362

<https://www.phoenixcontact.com/us/products/1139362>

Technical data

Product properties

Product type	Building management system
Area of application	Building technology

System properties

Type of software	On-premises
Intended use for the software	Automation

License information

Type of license	Maintenance license
License duration	1 Year (not relevant)

Functionality

Integrated function	Data acquisition
Target system	Server
Supported controller	ILC 2050 BI
	ILC 2250 BI
	Catan C1 EN
Number of data points (on-premises)	nicht relevant
Number of clients	nicht relevant

System requirements

Operating system	Windows® 10
	Windows® 8.1 Enterprise (64-Bit)
	Windows® Server 2012 Standard
	Windows® Server 2012 R2 Standard
Hard disk memory	min. 4 GByte (more recommended depending on the archiving requirements)
Interfaces	1 x Ethernet (10/100 Mbps), RJ45
Languages supported	German, English
Screen resolution	1024 x 768 pixel(s) ,or higher

1139362

<https://www.phoenixcontact.com/us/products/1139362>

Classifications

ECLASS

ECLASS-13.0	27242590
ECLASS-15.0	27242590

ETIM

ETIM 10.0	EC001435
-----------	----------

UNSPSC

UNSPSC 21.0	43233600
-------------	----------

1139362

<https://www.phoenixcontact.com/us/products/1139362>

Environmental product compliance

EU RoHS

Fulfills EU RoHS substance requirements	Not applicable, No electrical and electronic equipment (EEE), cannot be used in EEE
---	---

EU REACH SVHC

REACH candidate substance (CAS No.)	No substance above 0.1 wt%
-------------------------------------	----------------------------

Phoenix Contact 2026 © - all rights reserved

<https://www.phoenixcontact.com>

Phoenix Contact USA
586 Fulling Mill Road
Middletown, PA 17057, United States
(+717) 944-1300
info@phoenixcon.com