

CASE PTFIX L-BOXX DE - System package



1092040

<https://www.phoenixcontact.com/us/products/1092040>

Please be informed that the data shown in this PDF document is generated from our online catalog. Please find the complete data in the user documentation. Our general terms of use for downloads are valid.



PTFIX set in a practical Sortimo L-BOXX 102 system case. 90 distribution blocks, including with feed-in contact (rated cross-section 6 mm²) and pick-off contacts (rated cross-section 2.5 mm²), 40 monoblocks (rated cross-section 2.5 mm²), 60 DIN rail adapters, 20 screw flanges, jumpers, and marking material

Commercial data

Item number	1092040
Packing unit	1 pc
Minimum order quantity	1 pc
Sales key	BE09
Product key	BEA191
GTIN	4055626906911
Weight per piece (including packing)	4,781 g
Weight per piece (excluding packing)	4,758 g
Customs tariff number	85369010
Country of origin	PL

CASE PTFIX L-BOXX DE - System package



1092040

<https://www.phoenixcontact.com/us/products/1092040>

Set consists of

PTFIX 6/12X2,5 GY - Distribution block

3273352

<https://www.phoenixcontact.com/us/products/3273352>



Distribution block, Basic terminal block with supply, nom. voltage: 450 V, nominal current: 24 A, number of connections: 13, connection method: Push-in connection, Rated cross section: 2.5 mm², Load contact, cross section: 0.14 mm² - 4 mm², Push-in connection, Line contact, Rated cross section: 6 mm², cross section: 0.5 mm² - 10 mm², mounting type: for snapping onto a DIN rail adapter, Direct mounting with flange, Free-hanging, color: gray

PTFIX 6/12X2,5 BU - Distribution block

3273354

<https://www.phoenixcontact.com/us/products/3273354>



Distribution block, Basic terminal block with supply, nom. voltage: 450 V, nominal current: 24 A, number of connections: 13, connection method: Push-in connection, Rated cross section: 2.5 mm², Load contact, cross section: 0.14 mm² - 4 mm², Push-in connection, Line contact, Rated cross section: 6 mm², cross section: 0.5 mm² - 10 mm², mounting type: for snapping onto a DIN rail adapter, Direct mounting with flange, Free-hanging, color: blue

CASE PTFIX L-BOXX DE - System package

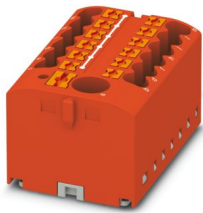
1092040

<https://www.phoenixcontact.com/us/products/1092040>

PTFIX 6/12X2,5 RD - Distribution block

3273356

<https://www.phoenixcontact.com/us/products/3273356>



Distribution block, Basic terminal block with supply, nom. voltage: 450 V, nominal current: 24 A, number of connections: 13, connection method: Push-in connection, Rated cross section: 2.5 mm², Load contact, cross section: 0.14 mm² - 4 mm², Push-in connection, Line contact, Rated cross section: 6 mm², cross section: 0.5 mm² - 10 mm², mounting type: for snapping onto a DIN rail adapter, Direct mounting with flange, Free-hanging, color: red

PTFIX 6/12X2,5 GNYE - Distribution block

1091671

<https://www.phoenixcontact.com/us/products/1091671>



Distribution block, Basic terminal block with feed-in without protective conductor function, nom. voltage: 450 V, nominal current: 24 A, number of connections: 13, connection method: Push-in connection, Rated cross section: 2.5 mm², Load contact, cross section: 0.14 mm² - 4 mm², Push-in connection, Line contact, Rated cross section: 6 mm², cross section: 0.5 mm² - 10 mm², mounting type: Free-hanging, color: green/yellow

CASE PTFIX L-BOXX DE - System package

1092040

<https://www.phoenixcontact.com/us/products/1092040>

PTFIX 6X2,5 GY - Distribution block

3273264

<https://www.phoenixcontact.com/us/products/3273264>



Distribution block, Basic terminal block, nom. voltage: 450 V, nominal current: 24 A, number of connections: 6, connection method: Push-in connection, cross section: 0.14 mm² - 4 mm², mounting type: for snapping onto a DIN rail adapter, Direct mounting with flange, Free-hanging, color: gray

PTFIX 6X2,5 BU - Distribution block

3273266

<https://www.phoenixcontact.com/us/products/3273266>



Distribution block, Basic terminal block, nom. voltage: 450 V, nominal current: 24 A, number of connections: 6, connection method: Push-in connection, cross section: 0.14 mm² - 4 mm², mounting type: for snapping onto a DIN rail adapter, Direct mounting with flange, Free-hanging, color: blue

CASE PTFIX L-BOXX DE - System package

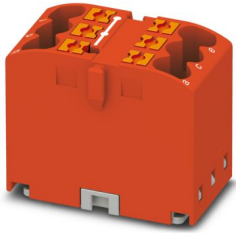
1092040

<https://www.phoenixcontact.com/us/products/1092040>

PTFIX 6X2,5 RD - Distribution block

3273268

<https://www.phoenixcontact.com/us/products/3273268>



Distribution block, Basic terminal block, nom. voltage: 450 V, nominal current: 24 A, number of connections: 6, connection method: Push-in connection, cross section: 0.14 mm² - 4 mm², mounting type: for snapping onto a DIN rail adapter, Direct mounting with flange, Free-hanging, color: red

PTFIX 6X2,5 GNYE - Distribution block

1091668

<https://www.phoenixcontact.com/us/products/1091668>



Distribution block, Basic terminal block without protective conductor function, nom. voltage: 450 V, nominal current: 24 A, number of connections: 6, connection method: Push-in connection, cross section: 0.14 mm² - 4 mm², mounting type: Free-hanging, color: green/yellow

CASE PTFIX L-BOXX DE - System package

1092040

<https://www.phoenixcontact.com/us/products/1092040>

PTFIX 2X2,5 GY - Monoblock

1028067

<https://www.phoenixcontact.com/us/products/1028067>



Monoblock, Basic terminal block, nom. voltage: 450 V, nominal current: 24 A, number of connections: 2, connection method: Push-in connection, cross section: 0.14 mm² - 4 mm², mounting type: for snapping onto a DIN rail adapter, Direct mounting with flange, Free-hanging, color: gray

PTFIX 2X2,5 BU - Monoblock

1028068

<https://www.phoenixcontact.com/us/products/1028068>



Monoblock, Basic terminal block, nom. voltage: 450 V, nominal current: 24 A, number of connections: 2, connection method: Push-in connection, cross section: 0.14 mm² - 4 mm², mounting type: for snapping onto a DIN rail adapter, Direct mounting with flange, Free-hanging, color: blue

CASE PTFIX L-BOXX DE - System package



1092040

<https://www.phoenixcontact.com/us/products/1092040>

PTFIX 2X2,5 RD - Monoblock

1028069

<https://www.phoenixcontact.com/us/products/1028069>



Monoblock, Basic terminal block, nom. voltage: 450 V, nominal current: 24 A, number of connections: 2, connection method: Push-in connection, cross section: 0.14 mm² - 4 mm², mounting type: for snapping onto a DIN rail adapter, Direct mounting with flange, Free-hanging, color: red

PTFIX 2X2,5 GNYE - Monoblock

1091665

<https://www.phoenixcontact.com/us/products/1091665>



Monoblock, Basic terminal block without protective conductor function, nom. voltage: 450 V, nominal current: 24 A, number of connections: 2, connection method: Push-in connection, cross section: 0.14 mm² - 4 mm², mounting type: Free-hanging, color: green/yellow

CASE PTFIX L-BOXX DE - System package



1092040

<https://www.phoenixcontact.com/us/products/1092040>

PTFIX-NS35 - DIN rail adapter

3274054

<https://www.phoenixcontact.com/us/products/3274054>

DIN rail adapter, for NS 35 and NS 15 for accommodating 2.5 mm², 4 mm², and 10 mm² FIX blocks in vertical direction, color: gray



PTFIX-NS35A - DIN rail adapter

3274056

<https://www.phoenixcontact.com/us/products/3274056>

DIN rail adapter, for NS 35 for accommodating 2.5 mm² and 4 mm² FIX blocks in horizontal direction, color: gray



CASE PTFIX L-BOXX DE - System package



1092040

<https://www.phoenixcontact.com/us/products/1092040>

PTFIX-F - Flange

3274060

<https://www.phoenixcontact.com/us/products/3274060>



Flange, With screw fixing, for direct mounting of the 2.5 mm² and 4 mm² FIX blocks, depth: 21.7 mm, width: 8.6 mm, height: 28.6 mm, color: gray, mounting type: Screw mounting

FBS 2-5 - Plug-in bridge

3030161

<https://www.phoenixcontact.com/us/products/3030161>



Plug-in bridge, pitch: 5.2 mm, number of positions: 2, nominal current: 24 A, length: 23 mm, color: red

CASE PTFIX L-BOXX DE - System package



1092040

<https://www.phoenixcontact.com/us/products/1092040>

SK 5/3,8:FORTL.ZAHLEN 1-10 - Marker for terminal blocks

0804183:0001

<https://www.phoenixcontact.com/us/products/0804183:0001>



Marker card, self-adhesive, horizontally labeled with the consecutive numbers: 1 ... 10, 10-section marker strips with 12 identical decades, white, for terminal block width: 5 mm, mounting type: adhesive

SK 5/3,8:FORTL.ZAHLEN 11-20 - Marker for terminal blocks

0804183:0011

<https://www.phoenixcontact.com/us/products/0804183:0011>



Marker card, self-adhesive, horizontally labeled with the consecutive numbers: 11 ... 20, 10-section marker strips with 12 identical decades, white, for terminal block width: 5 mm, mounting type: adhesive

CASE PTFIX L-BOXX DE - System package



1092040

<https://www.phoenixcontact.com/us/products/1092040>

SK 5/3,8: L1-N,PE - Marker card

0804206

<https://www.phoenixcontact.com/us/products/0804206>



Marker card, Sheet, white (RAL 9010), labeled, horizontal: L1, L2, L3, N, PE, mounting type: adhesive, for terminal block width: 5 mm, Number of individual labels: 12, text field height: 3.8 mm, text field width: 5 mm

CASE PTFIX L-BOXX DE - System package



1092040

<https://www.phoenixcontact.com/us/products/1092040>

Technical data

Product properties

Product type	Distributor terminal block
--------------	----------------------------

Dimensions

Width	445 mm
Height	358 mm
Depth	118 mm

Material specifications

Color	black (RAL 9005)
Insulating material	PA

Mounting

Mounting type	NS 35/7,5
	NS 35/15

CASE PTFIX L-BOXX DE - System package



1092040

<https://www.phoenixcontact.com/us/products/1092040>

Approvals

To download certificates, visit the product detail page: <https://www.phoenixcontact.com/us/products/1092040>



EAC

Approval ID: KZ7500651131219505

CASE PTFIX L-BOXX DE - System package



1092040

<https://www.phoenixcontact.com/us/products/1092040>

Classifications

ECLASS

ECLASS-13.0	27141190
ECLASS-15.0	27250190

ETIM

ETIM 10.0	EC002848
-----------	----------

UNSPSC

UNSPSC 21.0	39121400
-------------	----------

CASE PTFIX L-BOXX DE - System package



1092040

<https://www.phoenixcontact.com/us/products/1092040>

Environmental product compliance

EU RoHS

Fulfills EU RoHS substance requirements	Not applicable, No electrical and electronic equipment (EEE), cannot be used in EEE
---	---

EU REACH SVHC

REACH candidate substance (CAS No.)	No substance above 0.1 wt%
-------------------------------------	----------------------------

Phoenix Contact 2026 © - all rights reserved

<https://www.phoenixcontact.com>

Phoenix Contact USA

586 Fulling Mill Road

Middletown, PA 17057, United States

(+717) 944-1300

info@phoenixcon.com