

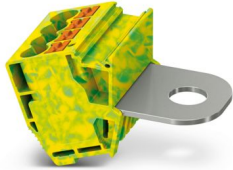
AGK PT 4X6/M10 GNYE - Pick-off terminal block



1083238

<https://www.phoenixcontact.com/us/products/1083238>

Please be informed that the data shown in this PDF document is generated from our online catalog. Please find the complete data in the user documentation. Our general terms of use for downloads are valid.



Pick-off terminal block, nom. voltage: 1000 V, nominal current: 41 A, number of connections: 5, connection method: Push-in connection, Rated cross section: 6 mm², 1 level, cross section: 0.5 mm² - 10 mm², Bolt connection, 1 level, mounting type: on base element, color: green-yellow

Terminal point designation,
alphabetical

Your advantages

- Large-surface marking
- The fully insulated, optionally used pick-off terminal block enables voltage pick-off

Commercial data

Item number	1083238
Packing unit	10 pc
Minimum order quantity	10 pc
Sales key	BE29
Product key	BE2ZWX
GTIN	4055626816753
Weight per piece (including packing)	42.18 g
Weight per piece (excluding packing)	37.7 g
Customs tariff number	85369010
Country of origin	CN

AGK PT 4X6/M10 GNYE - Pick-off terminal block



1083238

<https://www.phoenixcontact.com/us/products/1083238>

Technical data

Product properties

Product type	Pick-off terminal
Product family	PT
Number of connections	5
Number of rows	1

Insulation characteristics

Overvoltage category	III
----------------------	-----

Electrical properties

Rated surge voltage	8 kV
Maximum power dissipation for nominal condition	1.31 W

Connection data

Number of connections per level	5
Nominal cross section	6 mm ²
Rated cross section AWG	10

1 level

Connection method	Push-in connection
Stripping length	10 mm ... 12 mm
Internal cylindrical gage	A5
Connection in acc. with standard	IEC 60947-7-1
Conductor cross-section rigid	0.5 mm ² ... 10 mm ²
Cross section AWG	20 ... 8 (converted acc. to IEC)
Conductor cross-section flexible	0.5 mm ² ... 6 mm ²
Conductor cross-section, flexible [AWG]	20 ... 10 (converted acc. to IEC)
Conductor cross-section flexible (ferrule without plastic sleeve)	0.5 mm ² ... 6 mm ²
Flexible conductor cross-section (ferrule with plastic sleeve)	0.5 mm ² ... 6 mm ²
Conductor cross-section flexible (2 conductors with the same cross-section, with TWIN ferrule and plastic sleeve)	0.5 mm ² ... 1.5 mm ²
Nominal cross section	6 mm ²
Nominal current	41 A
Maximum load current	57 A
Maximum total current	106 A (Bolt connection)
Nominal voltage	1000 V

1 level

Connection method	Bolt connection
Screw thread	M10
Note	Connection bolts
Tightening torque	10 ... 20 Nm
Connection in acc. with standard	IEC 60947-7-1

AGK PT 4X6/M10 GNYE - Pick-off terminal block



1083238

<https://www.phoenixcontact.com/us/products/1083238>

Conductor cross-section flexible	6 mm ² ... 120 mm ²
Conductor cross-section, flexible [AWG]	10 ... 250 kcmil (converted acc. to IEC)
Nominal current	41 A

Cable lug connection

Cross section range AWG	(converted acc. to IEC)
Hole diameter	10.4 mm
Width	32 mm
Bolt diameter	10 mm
Screw thread	M10

Dimensions

Width	31 mm
Height	57.4 mm
Depth	32.3 mm
Hole diameter	10.4 mm

Material specifications

Color	green-yellow
Flammability rating according to UL 94	V0
Insulating material group	I
Insulating material	PA

Mechanical properties

Mechanical data

Open side panel	No
-----------------	----

Environmental and real-life conditions

Ambient conditions

Ambient temperature (operation)	-60 °C ... 110 °C (Operating temperature range incl. self-heating; for max. short-term operating temperature, see RTI Elec.)
Ambient temperature (storage/transport)	-25 °C ... 60 °C (for a short time, not exceeding 24 h, -60 °C to +70 °C)
Ambient temperature (assembly)	-5 °C ... 70 °C
Ambient temperature (actuation)	-5 °C ... 70 °C
Permissible humidity (operation)	20 % ... 90 %
Permissible humidity (storage/transport)	30 % ... 70 %

Standards and regulations

Connection in acc. with standard	IEC 60947-7-1
	IEC 60947-7-1

Mounting

Mounting type	on base element
---------------	-----------------

AGK PT 4X6/M10 GNYE - Pick-off terminal block



1083238

<https://www.phoenixcontact.com/us/products/1083238>

Drawings

Circuit diagram



AGK PT 4X6/M10 GNYE - Pick-off terminal block



1083238

<https://www.phoenixcontact.com/us/products/1083238>

Approvals

To download certificates, visit the product detail page: <https://www.phoenixcontact.com/us/products/1083238>

DNV

Approval ID: TAE000037B



CSA

Approval ID: 158887

	Nominal voltage U_N	Nominal current I_N	Cross section AWG	Cross section mm^2
B				
	1000 V	-	20 - 8	-
C				
	1000 V	-	20 - 8	-



EAC

Approval ID: RU C-DE.BL08.B.00644



cULus Recognized

Approval ID: E60425

	Nominal voltage U_N	Nominal current I_N	Cross section AWG	Cross section mm^2
B				
	-	-	20 - 8	-
C				
	-	-	20 - 8	-

AGK PT 4X6/M10 GNYE - Pick-off terminal block



1083238

<https://www.phoenixcontact.com/us/products/1083238>

Classifications

ECLASS

ECLASS-13.0	27250308
ECLASS-15.0	27250308

ETIM

ETIM 10.0	EC000897
-----------	----------

UNSPSC

UNSPSC 21.0	39121400
-------------	----------

AGK PT 4X6/M10 GNYE - Pick-off terminal block



1083238

<https://www.phoenixcontact.com/us/products/1083238>

Environmental product compliance

EU RoHS

Fulfills EU RoHS substance requirements	Yes, No exemptions
---	--------------------

China RoHS

Environment friendly use period (EFUP)	EFUP-E
	No hazardous substances above the limits

EU REACH SVHC

REACH candidate substance (CAS No.)	No substance above 0.1 wt%
-------------------------------------	----------------------------

EF3.1 Climate Change

CO2e kg	0.576 kg CO2e
---------	---------------

Phoenix Contact 2026 © - all rights reserved
<https://www.phoenixcontact.com>

Phoenix Contact USA
586 Fulling Mill Road
Middletown, PA 17057, United States
(+717) 944-1300
info@phoenixcon.com