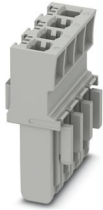


# CP 4/4 - Connector housing

1066561

<https://www.phoenixcontact.com/us/products/1066561>

Please be informed that the data shown in this PDF document is generated from our online catalog. Please find the complete data in the user documentation. Our general terms of use for downloads are valid.



Connector housing, nom. voltage: 800 V, nominal current: 10 A, connection method: Crimp connection, pitch: 6.2 mm, depth: 32.4 mm, width: 23.5 mm, height: 14.95 mm, number of positions: 4, color: gray, mounting type: Plug-in mounting

## Your advantages

- Compact size for applications where space is at a premium
- Inexpensive connection of preassembled conductors with crimp connection

## Commercial data

Item number	1066561
Packing unit	10 pc
Minimum order quantity	10 pc
Sales key	BE02
Product key	BE2144
GTIN	4055626733562
Weight per piece (including packing)	4.63 g
Weight per piece (excluding packing)	4.53 g
Customs tariff number	85389099
Country of origin	PL

# CP 4/4 - Connector housing



1066561

<https://www.phoenixcontact.com/us/products/1066561>

## Technical data

### Product properties

Product type	Plug
Number of positions	4
Pitch	6.2 mm

### Insulation characteristics

Overvoltage category	III
Pollution degree	3

### Connection data

Connection method	Crimp connection
Conductor cross-section flexible	1.5 mm <sup>2</sup> ... 2.5 mm <sup>2</sup>
Nominal cross section	1.5 mm <sup>2</sup>
Nominal current	10 A
Maximum load current	17.5 A (with 1.5 mm <sup>2</sup> conductor cross-section)
Nominal voltage	800 V

### Dimensions

Width	23.5 mm
Height	14.95 mm
Depth	32.4 mm
Pitch	6.2 mm

### Material specifications

Color	gray (RAL 7042)
Flammability rating according to UL 94	V0
Insulating material group	CTI 600
Static insulating material application in cold	-60 °C
Relative insulation material temperature index (Elec., UL 746 B)	130 °C
Fire protection for rail vehicles (DIN EN 45545-2) R22	HL 1 - HL 3
Fire protection for rail vehicles (DIN EN 45545-2) R23	HL 1 - HL 3
Fire protection for rail vehicles (DIN EN 45545-2) R24	HL 1 - HL 3
Fire protection for rail vehicles (DIN EN 45545-2) R26	HL 1 - HL 3
Surface flammability NFPA 130 (ASTM E 162)	passed
Specific optical density of smoke NFPA 130 (ASTM E 662)	passed
Smoke gas toxicity NFPA 130 (SMP 800C)	passed

### Environmental and real-life conditions

#### Ambient conditions

Ambient temperature (operation)	-60 °C (max. operating temperature see derating curve)
Ambient temperature (storage/transport)	-25 °C ... 60 °C (for a short time, not exceeding 24 h, -60 °C to +70 °C)

# CP 4/4 - Connector housing



1066561

<https://www.phoenixcontact.com/us/products/1066561>

Ambient temperature (assembly)	-5 °C ... 70 °C
Ambient temperature (actuation)	-5 °C ... 70 °C
Permissible humidity (storage/transport)	30 % ... 70 %

# CP 4/4 - Connector housing





1066561


<https://www.phoenixcontact.com/us/products/1066561>

## Approvals

To download certificates, visit the product detail page: <https://www.phoenixcontact.com/us/products/1066561>

 <b>IECEE CB Scheme</b> Approval ID: DE1-64672_B1_B2				
	Nominal voltage $U_N$	Nominal current $I_N$	Cross section AWG	Cross section $\text{mm}^2$
keine				
	800 V	10 A	-	-

 <b>VDE Zeichengenehmigung</b> Approval ID: 40043445				
	Nominal voltage $U_N$	Nominal current $I_N$	Cross section AWG	Cross section $\text{mm}^2$
keine				
	800 V	10 A	-	1.5 - 2.5

 <b>EAC</b> Approval ID: KZ7500651131219505				
---	--	--	--	--

# CP 4/4 - Connector housing



1066561

<https://www.phoenixcontact.com/us/products/1066561>

## Classifications

### ECLASS

ECLASS-13.0	27250306
ECLASS-15.0	27250306

### ETIM

ETIM 10.0	EC002021
-----------	----------

### UNSPSC

UNSPSC 21.0	31261500
-------------	----------

# CP 4/4 - Connector housing

1066561

<https://www.phoenixcontact.com/us/products/1066561>



## Environmental product compliance

### EU RoHS

Fulfills EU RoHS substance requirements	Yes, No exemptions
---	--------------------

### China RoHS

Environment friendly use period (EFUP)	EFUP-E
	No hazardous substances above the limits

### EU REACH SVHC

REACH candidate substance (CAS No.)	No substance above 0.1 wt%
-------------------------------------	----------------------------

### EF3.1 Climate Change

CO2e kg	0.032 kg CO2e
---------	---------------

Phoenix Contact 2026 © - all rights reserved

<https://www.phoenixcontact.com>

Phoenix Contact USA  
586 Fulling Mill Road  
Middletown, PA 17057, United States  
(+717) 944-1300  
[info@phoenixcon.com](mailto:info@phoenixcon.com)