

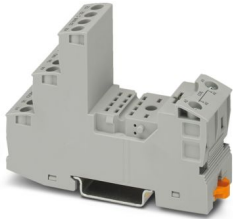
RIF-2-BSC/4X21/EX - Relay base



1047031

<https://www.phoenixcontact.com/us/products/1047031>

Please be informed that the data shown in this PDF document is generated from our online catalog. Please find the complete data in the user documentation. Our general terms of use for downloads are valid.



RIF-2.../EX relay base for assembling with RTIII-sealed industrial relays with 4 changeover contacts for use in zone 2, screw connection, plug-in option for input / interference suppression modules, for mounting on NS 35/7,5

Commercial data

Item number	1047031
Packing unit	10 pc
Minimum order quantity	10 pc
Sales key	C465
Product key	DK6513
GTIN	4055626646114
Weight per piece (including packing)	78.86 g
Weight per piece (excluding packing)	68 g
Customs tariff number	85366990
Country of origin	CN

RIF-2-BSC/4X21/EX - Relay base



1047031

<https://www.phoenixcontact.com/us/products/1047031>

Technical data

Product properties

Product type	Relay socket
Product family	RIFLINE complete

Electrical properties

Nominal voltage U_N	250 V AC/DC
Nominal current I_N	4x 6 A
Protective circuit	depending on the selected input/suppressor modules

Connection data

Connection method	Screw connection
Stripping length	8 mm
Conductor cross-section rigid	0.5 mm ² ... 4 mm ²
Conductor cross-section rigid (2 conductors with same cross section)	0.5 mm ² ... 2.5 mm ²
Conductor cross-section flexible	0.5 mm ² ... 4 mm ² 0.5 mm ² ... 4 mm ² (Ferrule with plastic sleeve)
Conductor cross-section flexible (2 conductors with same cross section)	0.5 mm ² ... 2.5 mm ² 0.5 mm ² ... 1.5 mm ² (TWIN ferrule with plastic sleeve)
Conductor cross-section AWG	20 ... 10 (solid) 20 ... 12 (flexible)
Tightening torque	0.5 Nm ... 0.6 Nm

Dimensions

Width	27 mm
Height	89 mm
Depth Retaining bracket	75 mm (with retaining bracket)

Material specifications

Color	gray (RAL 7042)
Flammability rating according to UL 94 (Housing)	V2 (Housing)

Environmental and real-life conditions

Ambient conditions

Ambient temperature (operation)	-40 °C ... 60 °C (Related to the assembly)
Ambient temperature (storage/transport)	-40 °C ... 85 °C

Approvals

Corrosive gas test

Identification	ISA-S71.04. G3 Harsh Group EN 60068-2-60
----------------	---

RIF-2-BSC/4X21/EX - Relay base



1047031

<https://www.phoenixcontact.com/us/products/1047031>

Mounting

Mounting type	DIN rail mounting
Mounting position	any

RIF-2-BSC/4X21/EX - Relay base



1047031

<https://www.phoenixcontact.com/us/products/1047031>

Classifications

ECLASS

ECLASS-13.0

27371603

ETIM

ETIM 9.0

EC001456

UNSPSC

UNSPSC 21.0

39122300

RIF-2-BSC/4X21/EX - Relay base



1047031

<https://www.phoenixcontact.com/us/products/1047031>

Environmental product compliance

EU RoHS

Fulfills EU RoHS substance requirements	Yes, No exemptions
---	--------------------

China RoHS

Environment friendly use period (EFUP)	EFUP-E
	No hazardous substances above the limits

EU REACH SVHC

REACH candidate substance (CAS No.)	No substance above 0.1 wt%
-------------------------------------	----------------------------

Phoenix Contact 2026 © - all rights reserved
<https://www.phoenixcontact.com>

Phoenix Contact USA
586 Fulling Mill Road
Middletown, PA 17057, United States
(+717) 944-1300
info@phoenixcon.com